

## ELECTION TIME

This month is election time at OCIPUG. Each year we canvas our members looking for members who wish to serve in an official capacity with the organization. Much work goes on behind the scenes. The Officers and Directors are charged with the responsibility of making sure that it all runs smoothly.

At last month's General Meeting, we held the first round of nominations for office. Several members were nominated and the Nominating Committee presented their candidates. To be a candidate, you must have been present to accept the nomination or have sent a letter accepting nomination if you were not able to attend. Don't despair, you'll have another opportunity to be nominated as a write-in candidate prior to each of the elections, one for Officers and one for Directors. There are four Officer positions and four Director positions available.

We have included a special Candidate Section in this issue. Check the adjacent Table of Contents for location. All of the candidates had

an opportunity to submit a brief statement on their behalf for publication. We encourage all members to be present at October's General Meeting and to cast your vote.

Last, I want to take this opportunity to inform you of recent changes in the newsletter staff. Jean Stevens will continue her fine job as the principal Editor. Richard Villa will continue to publish the SIG Guide supplement, which is included in each issue. Steve Burnside has agreed to take over my job as the Publisher. This job has given me great satisfaction, and some frustration.

It has been a quick two years, but it is time for me to step aside. Volunteers are needed to help with the newsletter, from articles to publishing to distribution. If interested, give Jean or Steve a call. Thank you for the privilege of letting me serve as both OCIPUG Director and Publisher these past two years.

Good Luck to all the candidates in the election!

*Steven Dela*

### IN THIS ISSUE

OCTOBER GENERAL MEETING	1
SEPTEMBER GENERAL MEETING REVIEWED	2
MEMBER SPOTLIGHT	4
GIBSON'S CORNER	5
CANDIDATE ELECTION STATEMENTS	INSERT
SIG REPORTS	8
TECHNICAL CORNER	10
MEMBERSHIP AND FINANCIAL REPORTS	12
IMPORTANT INFO	BC

**General Meeting, October 28, 1989 at 9:00 AM**  
**Orange Coast College Science Hall**  
**"Personal Management Software"**

*README.DOC* is published monthly by the ORANGE COAST IBM PC USER GROUP, P. O. Box 6100-211, Costa Mesa, CA 92628. The group's recorded message number is (714) 843-2048.

IBM is a registered trademark of the INTERNATIONAL BUSINESS MACHINES CORPORATION. Neither the User Group nor *README.DOC* is connected with IBM in any way.

ORANGE COAST IBM PC USER GROUP, contributors and editors of *README.DOC* do not assume any liability for damages arising out of the publication or non-publication of any advertisement, article, editorial, or any other item in this newsletter. All opinions expressed herein are those of the individual authors only and do not necessarily represent the opinions of the ORANGE COAST IBM PC USER GROUP, its officers, Board of Directors, the *README.DOC* newsletter, or its Editors.

#### GUIDELINES FOR README.DOC ARTICLE SUBMISSIONS

Send all submissions to the Editor, on or before the deadline listed below, using one of the following formats:

1. **UPLOAD** to the Bulletin Board indicating the format by extension, such as: ASCII.TXT, MSWord.WRD, WordPerfect.WP.
2. **5 1/4" DISK** mailed to the Editor in time to meet the deadline.
3. **HARD COPY** is acceptable only if typed and double-spaced.

**DEADLINE FOR ALL SUBMISSIONS WILL ALWAYS BE THE SATURDAY FOLLOWING THE GENERAL MEETING.**

All items submitted for publication are subject to editing.

The User Group does not intend to endorse, rate, or otherwise officially comment on products available, and readers are cautioned to rely on the opinions presented exclusively at their own risk.

*README.DOC*, Copyright© 1989 is a publication of the ORANGE COAST IBM PC USER GROUP. Unless otherwise noted, other nonprofit user groups may reprint without prior permission any of the articles appearing in this newsletter, provided that proper author, title and publication credits are given to the ORANGE COAST IBM PC USER GROUP's newsletter.

## README.DOC Newsletter

Created by:

**Publisher** Steven Dela  
**Editor** Jean Stevens  
**Production Editor** Steve Burnside  
**SIG Guide Editor** Richard Villa

**Proofreading** Jean Stephens  
**Production** Steve Burnside  
Steven Dela  
Richard Villa  
**Distribution** Jennifer & Melissa Dela  
Mary Lou Kennedy  
Gordon Lewin  
Christine McDonald

**Contributors** Steve Burnside  
Jerry DeAinza  
Neil Carman  
Paul Curtis  
Steven Dela  
Steven Gibson  
Harv Haight  
Dave Lorenzini  
Stan Sabin  
Jean Stevens

Camera ready copy produced with:

AST Premium 286  
LaserMaster CAP card

HP LaserJet II  
Ventura Publisher 2.0

Printing by PrintMasters #88 in Huntington Beach. (714-891-5006)

*README.DOC* is published monthly. A subscription is included with all paid memberships in the Orange Coast IBM PC Users Group.

Address all inquiries, editorial copy, advertising and address changes to: *README.DOC*, P. O. Box 6100-211, Costa Mesa, CA 92628

#### ADVERTISING POLICY

Members are allowed to place an advertisement for personal items in the *README.DOC* newsletter at no cost. There will be a limit to the amount of advertising placed in the newsletter. All submissions will be placed on a first come, first served basis.

Commercial advertisements, from members and others, are also welcome. For information concerning advertising rates and requirements, contact:

Steven Dela (714) 775-8373 or write to Advertising Manager, OCIPUG, P. O. Box 6100-211, Costa Mesa, CA 92628.

#### PURPOSE STATEMENT

The purpose of the ORANGE COAST IBM PC USER GROUP is to provide a forum for members to share information and experiences that will help other members obtain maximum benefit and enjoyment from the use of their IBM PC and compatible personal computers.

#### TRADEMARKS

The mention of the names of various products in this publication without indication of Trademark or Registered Trade Mark status does not imply that these products are not so protected by law.

# October General Meeting

## "Personal Management"

*Paul Curtis*

The October General Membership Meeting promises to be an interesting one for several reasons. First, this is the time of year for elections. It is an opportunity for you to help determine how the club will function for the next year. Please come and vote.

Ashton-Tate is coming to demonstrate a program that is so secret, some of their own people don't even know about it yet. They have three new product announcements scheduled for the end of October, and we will be among the first to see one of these new products. It does some fascinating things and will be especially helpful to new users.

Richard Katz, the former President and Grand Poobah of the UCLA User Group, has kindly offered to come and present the latest version of QUICKEN, called QUICKEN III, from Intuit Software. Richard could sell sand to the ocean; he'll be a real treat to watch. He is an amazing person. Don't miss this!

Mr. Sean Thakker from MoSean Software in Diamond Bar will be presenting a program called ABOUT TIME. This is a time management program with power. It works on a network and does a lot of things other time management programs cannot do. It is entirely menu driven and offers lots of context sensitive help. Certainly a "must see" kind of program.

Our own Max Lockie has consented to demonstrate DOLLARS and SENSE, from Monogram Software in Torrance, California. Lisa Magnus, from Monogram, will also be present to assist Max with his presentation, and answer any questions from the members. Max runs our Personal Finance SIG, which devotes itself to programs of this type. This SIG meets on the fourth Tuesday of each month at the SIG Space.

Please come, and imagine what it would be like if everyone brought a friend!

## Prodigy Subscribers

*Stan Sabin*

*(This is an excerpt of messages posted on the OCIPUG BBS by Stan about the recent renewal notice you may have received.)*

Members who signed up for PRODIGY under the original Charter Membership plan in September and October of 1988, and renewed after the initial six months for \$49.95, were to have their memberships extended for another year.

Due to a "computer malfunction", PRODIGY has been sending out renewal letters to many of you who have another six months of service left. I have contacted their Headquarters and clarified that those who renewed under that plan, still have time remaining and do not have to renew until the end of your subscriptions (approximately February 28th, 1990).

If you have already sent a check in, they will extend your subscription from the date your subscription REALLY was set to expire. They said that we could just ignore the early renewal letters that we received. When the actual renewal time comes, they will send us a new letter. If you encounter any problems in this regard just call 800 767-3664 and they will take care of it.

A further update to those who renewed under the \$49 12 month renewal. Since there were so many of us that joined under the Charter Membership program, they have assigned a person in the L.A. office just to handle any problems we have with this situation. If you want to make a call and ensure that your membership status is correct, you may call LORI at 818-995-0595. I believe the situation has been properly handled, but you may want to check your own ID # subscription.

## Outstanding!

*Richard Sabin, Secretary*

At the last General Meeting, Preston Hill came up to me and handed me a box containing a cord protector. He stated that he bought it to be used for covering over some of the electrical and microphone cords that often run across the front of the Auditorium. The purpose of this device was to prevent someone from tripping over these cords. When I asked Preston what the cost was, he replied that it was his donation to OCIPUG! What a magnificent example of giving for the benefit of others in the club!

I applaud Preston for his desire to increase the effectiveness of this organization, and taking care of of little details that count.

# General Meeting Report

*Paul Curtis*

The September meeting featured OS/2, MCA and EISA technologies.

This is my first opportunity to write about the results of a General Membership meeting. What makes it interesting for me is that, even though I opened the meeting, I was unable to sit through most of it because Richard Sabin, Jerry Greene, Steve Burnside, and I, were working on the logistics and setup, for our annual photography session at the school athletic field. Most of what is being reported here has been taken from the video tape of the meeting.

I would like to share a couple of thoughts with you regarding General Membership meetings. Dave Lorenzini, has been our Program Committee Chairman since the passing of Tim Smith, and for some time prior to Tim's assumption of this responsibility. During this time, Dave has put forth a special effort to obtain speakers, whose topics he felt would be of interest to the membership-at-large. Since there is a broad spectrum of both experience and skill levels in our organization, this was often a difficult task. The philosophy has always been that we wanted speakers who would explain what a product did, rather than just how it worked, and that was not always easily accomplished.

Whether the product is presently on the market, or slated for future delivery, has not been an issue. Whether it is interesting and of value to the membership, is the primary concern. The risk of putting on presentations of future products becomes evident, when

modifications are made before shipping. The advantage, however, is that if you are contemplating the purchase of a particular item, and are aware of one that will run faster, perform more efficiently, or in some other way better serve your needs, you will be able to make a more informed decision with regard to your purchase.

Dave Lorenzini has been a good and faithful servant to OCIPUG for many years now, and is about to retire as Program Chairman. We all owe Dave an expression of our appreciation. Thank you very much, Dave. You have done an outstanding job.

Now, on with the report. At our September meeting, we had the opportunity to hear speakers from Microsoft Corporation, IBM, and AST Research, Inc.

Margaret Johnson is a Systems Engineer. She stated initially that her topic would not be, advanced boogie boarding. Instead she gave us a presentation of OS/2, the logical next step up from DOS. She discussed it's features, the available applications and the hardware requirements. She stated that DOS clearly will not go away, but that DOS does have some constraints which OS/2 addresses. These are: lack of a user interface, a 640K memory boundary, and the limitations of single tasking. OS/2 represents the disciplined evolution of an operating system.

OS/2 has a consistent user interface across all applications, which consists of a File Menu, Edit Menu, Help Menu, and a Windows Menu. These are generic to all applications running under this system. The comparison was made that PRESENTATION

MANAGER is intrinsic to OS/2 while WINDOWS is a shell which sits in memory on top of DOS.

Margaret told us that multi-tasking is like drivers on the Southern California freeway system. She said that it was difficult to drive the car, talk on the phone, gesture to other drivers, and have an accident, all at the same time. For those of you who may not be aware of it, Margaret has a Freeway Shooters Menu on the door of her office. Ask her about it the next time you see her.

Actually, multi-tasking will allow a spreadsheet to perform calculations, and a communications program to call a news or database service, all while you are creating a document in your word processing program. OS/2 accomplishes this by allowing multiple threads of instruction to pass through the processor simultaneously. It also uses time slicing, to divide up the time among the various processes.

She explained that DYNAMIC DATA EXCHANGE, allows for the real time up-dating of a spreadsheet program, through a communications program, without user intervention.

EXCEL was demonstrated to show how to move things around in windows, and consolidate information from several worksheets.

Margaret described the minimum hardware requirements as an 80286 based system, with 2 megabytes of random access memory (or as much memory as you can get your hands on), a 40 megabyte hard drive, and an EGA display system.

The ideal setup for OS/2 is an 80386 system running at 20 mhz with 6 megabytes of RAM, a 100

megabyte hard drive, and an EGA display. The reason for this being the ideal setup, is because Margaret brought this very same equipment with her to the meeting. Apparently, she thought everyone owned one of these machines. In fairness, she did indicate that 4 megabytes of ram would make you comfortable.

After her formal presentation, Margaret took several questions from the floor. People wanted to know how OS/2 handles memory, and she indicated that it would handle up to 16 megabytes of contiguous ram.

One member wanted to know what the learning curve was for OS/2. She replied that we could get good, unbiased information from magazines such as PC Magazine. These folks conduct studies with people of differing backgrounds and skill levels, and their conclusions are more likely than hers, to be accurate. She strongly advises that if you intend to purchase OS/2 for a clone, it should be purchased from the manufacturer of the clone. This is good advice regarding the purchase of any operating system.

Someone else asked how many versions of OS/2 there are at present. There is version 1.0, 1.1 (which is the extended version supporting communications and database management) and the soon-to-be released 1.2, with some "really nifty things in it."

Out next speaker, Charlie, (whose last name I failed to get) came from IBM to discuss Micro Channel Architecture. He is a Systems Engineer (read Software Specialist) from Los Angeles, and supports Southern California, Arizona, and Hawaii, in what is known as Area 12 for IBM. He started his presentation by complimenting Margaret for a job well done. Just as an aside, it must take a real spirit of adventure, for an IBM Systems Engineer, to

stand in front of an audience of users and ask, "How many people use clones?"

Charlie described Micro Channel as being like a four lane highway. In Dallas, you can get from Los Colinas to downtown in about fifteen minutes. If you travelled by country road it would take you about an hour. He said that Personal System/2 is a product family, and the Micro Channel Architecture is implemented within that family of products, but is not exclusive to it. He said that there are 2,728 MCA devices from 694 vendors at present. There are 20 vendors of bus master and 69 companies have signed up for ID numbers, which are built into the add cards for identification to the system. You can use the ID number to determine what is in the system through software, even if you are operating remotely.

Charlie also indicated that the design of the Model 70-821 has the processor on a daughter board, so that it can be exchanged when you decide to upgrade from a 80386, to a 80486 system. The cost of that upgrade is presently about \$4,000 and the upgrade device is smaller than a hubcap.

Mike Krieger came to us from AST Research to discuss the EISA concept. I say concept because it is not actually shipping as of this writing. Mike pointed out that EISA is not a new system but rather is an extension of the existing AT system. Therefore, you will not need different add-on boards to support the AT and EISA Bus systems. Arbitration is built into EISA and it is configured with software called EISACU, or EISA Configuration Utility.

Mike also pointed out that the Non-Disclosure Agreement which was in place, expired on October 9, 1989. It was put there to protect the initial developers from attack by the press and others, until they

had something concrete to demonstrate. The initial fee of \$2,500 for technical reference material, was imposed to cover the cost of weekly updates and telephone information, as it became available. Mike said that the price of the documentation is likely to come down drastically in the near future.

EISA is intended as a high end solution. It extends the existing architecture to accommodate such things as high performance video. Mike showed us an illustration of the I/O slot and left a slot with us. He wanted to show the notches in it, to illustrate how it accommodated both types of boards.

Mike reiterated the fact, that EISA is not a third standard. It is intended to support, preserve, and extend the existing AT standard.

After the presentations Dave Lorenzini presented each speaker with an OCIPUG coffee mug, as a token of our appreciation.

The meeting was then moved to the track field for an outdoor photo session. Steve Burnside was kind enough to go out and rent, at his own expense, an 8x10 Sinar camera. Roy Cone was kind enough to bring his professional camera equipment, as he did last year, and take color photos. Jim Samuelson also brought his camera, as did Richard Sabin. My thanks to all of them for their contribution.

We were not able to have the raffle because there was an incompatibility between the disk drives of the Toshiba T1100 and T5100. We still don't know what caused the problem, but we'll have a good raffle at the next meeting.

Be sure to attend the October General Meeting, which will feature Personal Finance software.

See you there!



# Today, the power a lot to do with the

	Qtr 1	Qtr 2	Qtr 3	Qtr 4
Assets	357,830	196,075	455,100	
Current Assets	123,000	145,000	223,000	257,400
Fixed Assets	195,400	212,850	(27,005)	197,700
Liabilities				
Current Liabilities	22,500	25,700	27,315	30,340
Long-Term Liabilities	32,500	32,500	32,500	32,500
Equity	4,500	3,600	4,400	3,800
Retained Earnings	2,575	2,600	2,767	2,890
Common Stock	19,700	10,700	10,700	10,700
Preferred Stock	1,725	2,100	4,000	2,200
Minority Interest	17,200	17,900	20,184	18,555
Other	1,320	1,075	1,477	1,659
Total	1,700	2,000	2,200	2,400

	Qtr 1	Qtr 2	Qtr 3	Qtr 4	Total
Product A	50,100	110,000	71,600	110,000	381,700
Product B	40,000	100,000	43,000	111,700	294,700
Product C	10,500	43,200	21,800	90,650	166,150
Product D	21,200	90,000	60,425	110,250	282,875
Total Sales	122,800	343,200	196,825	452,600	1,115,425

	Qtr 1	Qtr 2	Qtr 3	Qtr 4	Total
Product A	18,000	22,250	15,000	22,500	77,750
Product B	6,000	18,000	5,000	13,000	42,000
Product C	21,500	5,000	8,500	23,250	58,250
Product D	1,000	13,000	13,000	18,000	45,000
Total Profit	46,500	58,250	41,500	76,750	223,000

Release 3's 3D design opens up all kinds of new possibilities to improve the efficiency of your work.

In business, more than ever before, power is a function of information. And nothing can help you exploit the power of data like the new Lotus® 1-2-3®: Release 3 and Release 2.2.

1-2-3 Release 3 lets you manipulate data, navigate through complex applications, and work with more speed, power and ease than any other spreadsheet.

In fact, *InfoWorld* recently was moved to say "...with this new release, 1-2-3 has instantly regained its long-standing position as the sheet to beat."<sup>1</sup>

Much of the credit belongs to Release 3's

revolutionary, true three dimensional design, which lets you view and work with up to 256 worksheets and files simultaneously. And its sophisticated file linking capabilities are unparalleled, because you can link worksheets and files in memory, on disk or on a network.

But the advantages of 3D aren't limited to spreadsheets. It also allows you to use the new relational data management capabilities to analyze information from multiple data tables. Release 3's database is simply the most powerful available in a spreadsheet

<sup>1</sup>*InfoWorld* July 17, 1989. \*In Canada call 1-800-668-1509. Ask for Department 23 © 1989 Lotus Development Corporation. Lotus and 1-2-3 are registered trademarks of Lotus Development Corporation. Hard disk and 1 Mb system memory required in DOS; 3 Mb in OS/2. Lotus certified compatible PC AT with 80286/80386.

# behind a desk has power on top of it.

You can even bring data from external databases, like dBase III®, directly into your spreadsheet. Without ever leaving 1-2-3.

Equally impressive is Release 3's presentation quality output and its selection of advanced analytical graphics.

With the Lotus Add-In Tool Kit for Release 3, you can create a wealth of customized @ functions, macro key words and turnkey applications.

Release 3 is for DOS or OS/2® users. It's designed to fully exploit the 1 Mb of memory that's standard on today's 286 and 386-based PCs.

Those of you who work on all types of PCs in a 640K DOS environment, read on. Because we designed 1-2-3 Release 2.2 to maximize the power in your PC.

Release 2.2 offers remarkable speed and presentation quality output, as well as improved analytical power in the way of file

## The New Lotus 1-2-3

*The spreadsheet of choice*

linking, minimal recalc and undo.

Of course, both Release 3 and Release 2.2

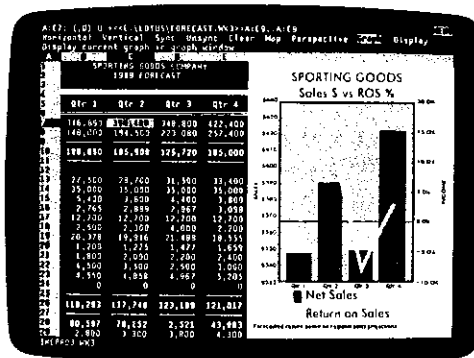
provide the highest compatibility with your present 1-2-3 files, macros and applications, and with each other.

There's never been a better time to upgrade to Lotus 1-2-3, because there's never been a better 1-2-3.

For more information, contact your Lotus Authorized Reseller. Or, if you're a current user, call 1-800-TRADE-UP.\* Ask for Ext. 569 for upgrade information.

Then you'll see firsthand how the new Lotus 1-2-3 will give you more power than ever before.

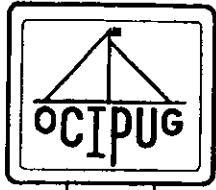
On the desk and behind it.



Release 3's HotView graph window dynamically links your worksheet and related graph.



Corporation. OS/2 is a registered trademark of International Business Machines, Inc. dBase III is a registered trademark of Ashton-Tate Corporation. 1-2-3 Release 3 runs under DOS or OS/2 processor required. Release 2.2 runs on Lotus certified PCs of all types in DOS with a minimum of 320K system memory.



# The Orange Coast IBM PC User Group SIG GUIDE

*A Calendar of Meetings & Events edited by Richard Villa*

For more information on membership, write to OCIPUG at PO Box 6100-211,  
Costa Mesa, CA 92628. Call Voice - 714/843-2048 or BBS - 714/843-0388

O  
C  
T  
  
N  
O  
V  
E  
M  
B  
E  
R

SUN	MON	TUE	WED	THU	FRI	SAT
29	30 OCIPUG Board Meeting 6:30 PM	31 Real Estate 8 AM	1 Desktop Publishing	2 Modem	3	4 New Users 9 AM DOS 1 PM
5	6	7 Spreadsheet	8 Small Business	9 CAD/ Graphics	10	11 Shareware 10 AM
12	13 WordPerfect	14	15 Investors	16 Networking	17	18 9AM - OCIPUG General Meeting O.C.C. Science Hall DataPerfect 12:30 PM
19	20 OCIPUG Board Meeting 6:30 PM	21 C Language BBS	22 Q & A	23 Thanksgiving Day	24	25
26	27 MS Word UNIX/Xenix	28 Real Estate 8 AM Personal Finance	29	30		

All Special Interest Groups (SIG's) are held from 7 PM to 10 PM  
at our SIG SPACE, located at 17632 Metzler Lane, Suite 211,  
Huntington Beach unless otherwise listed.

## Q & A

SIG Leader: Tom Sutro 714/850-0474

We will discuss *Symantec's Q&A*, one of the most popular database programs available. Please come with your questions.

4TH WED

## REAL ESTATE

Contact Person: Kent Pierce 714/536-0271  
Contact Person: Tom Sutro 714/850-0474

Jointly sponsored by OCIPUG and several local Boards of Realtors, this is one of our largest SIG's. Check the Hot Line for the topic of the month. (Coffee at 7:30 AM)

Newport Harbor - Costa Mesa Board of Realtors  
Boardatorium, 401 North Newport Blvd., Newport Beach.

LAST TUE

## SHAREWARE

SIG Leader: Bonnie Ulanovsky 714/646-5230

Various shareware programs will be demonstrated, and random access will answer your questions about which programs are best for you. Neil Carmen will demonstrate Buttonware's new version of *PC-Calc+* at the November meeting. Library disks will be available for purchase from Bonnie. Member prices \$3.00 per disk. (Call Bonnie prior to meeting to order specific titles.)

2ND SAT

## SMALL BUSINESS

SIG Leader: Richard Sinar 714/645-7608

The topic for November will be goal setting for small business (pros & cons).

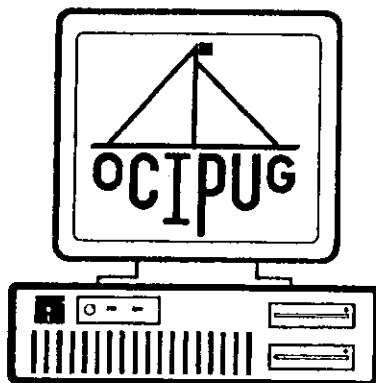
2ND WED

## SPREADSHEET

SIG Leader: John Alesi 714/770-1130  
Designated Guru: Neil Carman 714/964-1901

This group covers *Lotus 123* and other popular spreadsheet programs, including shareware products, for both beginners and advanced users.

1ST TUE



## WORD

SIG Leader: Winston Jewson 714/544-4330  
Microsoft Contact: Dave Lorenzini 714/751-9262

*Microsoft Word* is a powerful and popular word processing package. The November meeting will be divided in three topics: **Beginners:** Drill on formatting paragraphs and pages, resetting margins sorting a list & keyboard shortcuts. **Intermediate:** Adding page numbering to documents, running heads & customizing the screen. **Advanced: Part I - Word and laser printers**, with a discussion on type faces and fonts and their use in Word.

4TH MON

## WORDPERFECT

SIG Leader: Jim Pieratt 714/969-4782  
SIG Leader: Taoward Lee 714/646-5557

*WordPerfect* is a very popular word processing program. This SIG covers topics for both beginners and advanced users.

2ND MON

## UNIX/XENIX

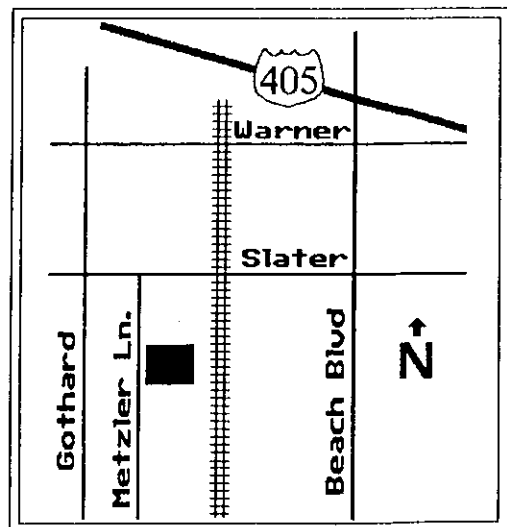
SIG Leader: Robin Clark 714/786-7880

Ever wonder what this UNIX stuff is all about? Or do you speak 'grep' or 'tar' with the pros? Whether you're a novice or an expert, come to the SIG and share your expertise and your questions. Come to the November meeting to continue discussing UNIX.

4TH MON

Architectural Resources, 3001 Redhill, Bldg. 2, Suite 107,  
Costa Mesa

## SIG SPACE



17632 Metzler Lane, Suite 211 - Huntington Beach

**BBS****3RD TUE**

SIG Leader: Rich Sabin 714/968-3539

The November meeting will be Stage II: Sysop selection, responsibilities, and assignment. **PLEASE COME AND SUPPORT YOUR BBS!**

Richard Sabin's Home, 19651 Sanderson Lane, Huntington Beach

**HARDWARE****4TH THU**

SIG Leader needed. Call David Carroll at 714/775-3130 if interested.

Designated Guru: Paul Cutris 714/774-1827

This SIG is one of the most popular, judging by the strong attendance. **This SIG will NOT meet in November due to the Thanksgiving holiday. See you in December.**

**INVESTORS****3RD WED**

SIG Leader: Gordon Savage 714/533-3986

Contact Person: Greg Cimmarrusti 714/559-8939

This group explores the world of software designed especially to help investors of stocks, bonds and commodities.

**MODEM****1ST THU**

SIG Leader: Rich Sabin 714/968-3539

Reach out and access the whole world of information through telecommunications. **At the November meeting we will show aspect (script & macro) files. How to automate signing-on to BBS, database services & home computer systems. Come and random access with us.**

**NETWORKING****3RD THU**

SIG Leader: Jim Mansfield 714/751-2243

SIG Leader: Andy McGill 714/731-2951

Come and learn about the fastest growing segment in business computing. **(CALL HOTLINE FOR LOCATION)**

**NEW USER/NEW MEMBER****1ST SAT**

SIG Leader: John Lunsford 714/995-0947

This is the best SIG to attend first. The meetings run on a 4-month cycle and this month is number **THREE** in the cycle.

**PERSONAL FINANCE****4TH TUE**

SIG Leader: Max Lockie 714/644-0103

This SIG discusses the various financial packages for the PC. **At the November meeting we will be reviewing Quicken 3.0, setting up accounts and inputting checks. A comparison to Dollars & Sense will also be made. Please come with your questions.**

**Important Telephone Numbers**

Public Bulletin Board (BBS) - 714/843-0388

Hot-Line - For latest information on meetings and events  
714/843-2048

SIG Space Telephone Number - 714/843-9248

**C LANGUAGE****3RD TUE**

SIG Leader: Mark Roberts 714/951-2193

If you have an interest in programming in C, please come to the November meeting.

**CAD/GRAPHICS****2ND THU**

SIG Leader: David Carroll 714/775-3130

Designated Guru: Dave Lorenzini 714/751-9262

This SIG covers hardware and software products in both computer aided design and graphics. **Topic for November will be IBM Storyboard Plus, IBM's animation software.**

**DATABASE****2ND TUE**

SIG Leader: Bob Schmiedeke 714/536-1178

Contact Person: Kent Pierce 714/536-0271

This SIG will NOT meet in November to allow members to attend COMDEX.

**DATAPERFECT****3RD SAT**

SIG Leader: Jim Pieratt 714/969-4782

Please check with the SIG leader for the topic at the November meeting.

**DESKTOP PUBLISHING****1ST WED**

SIG Leader: Ben LeGare 714/586-8236

Designated Guru: Richard Villa 213/439-8110

This SIG covers all desktop publishing related topics in general during the first half, and specializes in *Pagemaker & Ventura Publisher* and other advanced topics in the last half. **At the November meeting, Denise Wells of Aldus will present PageMaker for OS/2.**

**DOS and LANGUAGES****1ST SAT**

SIG Leader: Bill Phillips 714/998-7496

Designated Guru: John Goodman 714/895-3195

Come to this group to learn more about how your PC works and how to get it to do what you want. **A representative from Norton Computing will present Norton Commander.**

October 28th 1989 - 9:00 AM


## Personal Management Software

Quicken 3.0, by Richard Katz, UCLA IBM PC User Group

About Time, Time Management Software, by Sean Thakker

Dollars & Sense, Max Lockie, assisted by Lisa Magnus, Monogram Software

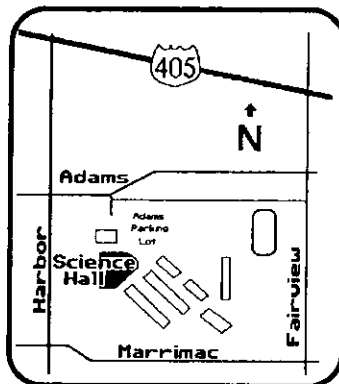
## A surprise by Ashton-Tate!

 Coming November 18th: Microsoft Windows Software

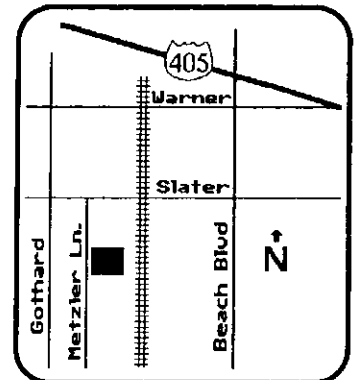
GENERAL  
MEETING

MEETING  
LOCATIONS

Orange Coast  
College  
Costa Mesa  
2701 Fairview Rd.  
General Meeting:  
Science Hall (next to  
Chemistry Bldg.)  
Parking in campus  
lots available



SIG Space  
Huntington Beach  
17632 Metzler  
Lane, Suite 211  
SIG Meetings:  
Take elevator to  
2nd floor.  
Parking in lot or  
on street



MEMBERSHIP  
INFORMATION

Orange Coast IBM PC User Group (OCIPUG) was formed in 1985, and has become one of the largest and most respected User Groups in the country.

OCIPUG, a non-profit corporation, is an all-volunteer organization which provides PC enthusiasts with an opportunity to gain knowledge and gives assistance to those who need it.

Membership includes:

- ✓ subscription to README.DOC, the monthly newsletter published by OCIPUG
- ✓ discounts on Public Domain, Shareware and User Supported software
- ✓ access to the OCIPUG RBBS private telephone line
- ✓ eligibility for monthly raffle at General Meeting
- ✓ free copies of software and publications

If you would like to become an OCIPUG member please call 714/843-2048 and request an application for membership, or write: OCIPUG, PO Box 6100-211, Costa Mesa, CA 92628-6100.

OCIPUG SIG GUIDE camera ready copy produced with: *Microsoft Windows/286, Aldus PageMaker 3.0, SoftCraft Spinfont, PC Paintbrush Plus for Windows* using an *HP LaserJet Series II* with *Bitstream Fontware* (ITC Galliard, Handel Gothic and ITC Zapf Dingbats). Graphics illustrations prepared by Richard Villa & David Carroll. **SIG LEADERS:** To update SIG information in this guide, please call 213/439-8110.

# CANDIDATE ELECTION STATEMENTS OCTOBER 1989 ELECTION CAMPAIGN

## OFFICE OF PRESIDENT



PAUL CURTIS - President

I am now committed to another term of office and will continue on our present course with the long term goals of the club. My primary mission will be to increase the number of members substantially. The facilities are now in place to allow that to happen.

We have accomplished a lot this term and it has truly been a team effort. Our most important event was the Evening with Bill Gates. We heard some important ideas and raised a substantial amount of money for the scholarship fund.

## OFFICE OF VICE PRESIDENT



RICHARD SABIN - Vice President

As an active volunteer for OCIPUG, I started the BBS with my computer serving as Sysop for the last 4 years, Modem SIG "Guru" for 3 years, Coordinator 1 year, Program Committee several times, and as Hardware Coordinator, donated time to purchase and assemble club equipment. Served as Director 1988 and Secretary 1989.



DAVE CARROLL - Vice President

No statement submitted by deadline.

## OFFICE OF SECRETARY



NEIL CARMAN - Secretary

I will work for better communication between the Board and the membership to establish what you want this organization to be. I want to involve more members in running the club to reduce burnout and bring in new ideas.



STAN SABIN - Secretary

No statement submitted by deadline.

# CANDIDATE ELECTION STATEMENTS OCTOBER 1989 ELECTION CAMPAIGN

## OFFICE OF TREASURER



TONI MASSOTH - Treasurer

IT CAME UPON A MORNING CLEAR THAT ELBOW NUDGING:  
"HAVE NO FEAR! NO WORRIES, MATE! OLD TONTS HERE!" (AND  
JERRY'S HAND WILL GUIDE THE DEAR.)

BOOKKEEPING IS A THING SHE'S DONE SINCE SONNY &  
CHER HAD THEIR FUN. THERE ONLY ARE TEN NUMBERS, SON.  
ARRANGE 'EM & THE SPELL IS SPUN.

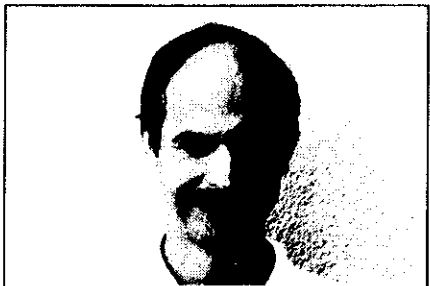
A VOTE FOR TONTS ALL I ASK. (OR YOU COULD DO THIS  
LOVELY TASK!!) TUT! TUT! I SEE A STONY MASK. A VOTE FOR  
TONTS ALL I ASK!

## OFFICE OF DIRECTOR



JIM PETIT

My name is Jim Petit, candidate for the OCIPUG Board of Directors.  
I started in computer usage for business and pleasure in 1982 (CPM  
days) and joined OCIPUG (#259) in 1986. I have gained a tremendous  
wealth of information from SIGs and monthly main meetings and  
welcome the opportunity to have the chance to repay you, the member-  
ship, with my experience and time. I ASK FOR YOUR VOTE!



TERRY CURRIER

No statement submitted by deadline.



HARV HAIGHT

As member #052, I've written technical articles for and edited  
README.DOC. As a Director, I will use my background of computer-  
related electrical engineering to help OCIPUG and individual mem-  
bers. With no commercial affiliation, I will evaluate club issues fully



SUNNY LOCKIE

No statement submitted by deadline.

# SIG CORNER

## SHAREWARE SIG

*Lia Varner*

Our own club President, Paul Curtis, was the speaker Saturday morning, September 9th. For those of you who are new to OCIPUG, Paul has his own consulting firm and also is an instructor at Orange Coast College. His topic this Saturday was Diagnostic Software. He covered approximately 20 shareware programs and also gave us some HOT TIPS that he has gleaned from his years of experience working with many different systems and applications.

**ED—Environment Editor:** Placed in RAM, this program allows you to set your system configuration, path and/or prompt. DOS looks for the filename entered in the default drive; 1st for .com extension, 2nd for .exe extension, and 3rd for .bat extension. The "PATH" will then allow the system to go to another drive or sub-directory, the PATH can be up to 127 characters long, customized to your particular needs. (HOT TIP! Start the PATH command with ":", which will take you directly to the parent directory first if you are in a sub-directory. Also, enter in all caps - it saves the system from converting to caps to read the PATH.) You can have the PROMPT go to C, or c:\ or c:\DBASE.

When you change from one shell program to another, you often need to change the environment. You can change from an environment of 160 bytes, up to as many as 32,000 bytes. The "SET" will show what the environment is. (HOT TIP! Make your Config.sys, Command.com, and Autoexec.bat

files, "READ ONLY" so they won't be destroyed by accident when installing new programs that supersede their files, over those already on the system.)

**WHERE IS:** On an 80MG drive, this program will locate any file on any level. (HOT TIP! Although you can go up to 64 deep in sub-directories, Paul recommends no more than four levels. Any deeper can become an absolute nightmare.)

**DIAGNOSTIC ERROR CODES:** Comprehensive list of all the error messages that will come up on your screen and what they mean. (HOT TIP! When purchasing hardware, be sure to get complete documentation of the system and all small boards that come with it. This is why you might consider IBM, Compac or another brand name - these have complete documentation in case of later upgrading and/or problems.)

**RMAP—Memory Map Program:** Will help when installing TSR programs because it is resident in memory.

**STACK:** A memory resident program that will show what the setting of the FUNCTION keys are. Also, will show the last 15 commands entered.

**WHAT AM I:** This program shows a system configuration report which eliminates having to take the system apart to see what is there.

**WHAT YOU HAVE:** Shows a graphic display of what you have.

**VAMPIRE:** Reads BIOS ROM chips - also a traffic director.

**SYSMAP:** Shows ROM version and machine type. Shows resident version of RMAP (however RMAP is more explicit).

**PCS - PC STATUS:** Tells what is available mode for video.

**BOOT:** Causes system to reboot automatically when you need all available space.

**FAT—File Allocation Table:** Shows where the actual data is located on the system. Paul finds that commercial programs are more usable because they will show the sector number as well as the location.

**PCUTL:** A collection of little utilities. Not real practical unless you have very large clusters.

**PEPO108: WARNING -** This is a very dangerous program. You can go into a file in memory, rewrite and save it. However it can trash adjacent data if you save more than the space allowed before rewriting it. Use with caution.

**NORTON PRODUCT GUIDE:** Explains all DOS commands more conveniently than the DOS manual. Contains explanations of error messages. It has batch enhancers and much more. It is a must if you have NORTON UTILITIES.

**BENCHMARK:** From PC Lab, an affiliate of PC Magazine, gives you some performance indexes and saves them. You can then compare them with other machines. This will help you decide on the equipment that will best meet your needs.

**QA+ (Commercial software):** Will keep data on diskette and then compare with next computer you want to test; for speed, size, etc. (HOT TIP! When replacing boards or jumpers TURN OFF SYSTEM. If you forget to, QA+ will tell you the new address.)

**REBOOT Ver 2.2:** Paul wasn't terribly impressed because

they list reasons why it will not work in several conditions - and they aren't going to fix them. There are other programs that will do what this program won't, so better deal with them.

**BOOT** by Stephen C. Kick: This program enables you to have a configuration set just for a particular application with explicit location name.

There were many questions answered by Paul that helped all of us, beginners and advanced users. And we take this opportunity to thank him again for sharing his time and expertise with us.

## PERSONAL FINANCE SIG

*MAX LOCKIE*

The first meeting of the Personal Finance Sig was held on September 26. At that time, I presented the first in a series of different Personal Finance packages, DOLLARS and SENSE.

The demonstration started with the loading of the package followed by the creation of a Chart of Accounts (COA). Various types of transactions were tried, including checks, VISA transactions and credit cards. Changes in checking account balances were noted as the transactions occurred. A dummy bank statement was used to reconcile the checking account. At the end a difference showed up that turned out to be the bank charges. It all worked out. Everyone understood what was happening.

The next meeting is scheduled for Tuesday, October 24th at 7 pm. At that time we will finish DOLLARS and SENSE by first reviewing what was covered last month, for those who missed the meeting, then followed by "how to streamline the process." Descriptors and Automatic transactions will be examined. This will be followed by printing of checks. Finally, dif-

ferent reports will be examined to see how they can help us budget our money.

In November, we will start with **QUICKEN**. As with **DOLLARS** and **SENSE**, we will start by establishing accounts, entering checks, and printing checks. See you then.

## SPREADSHEET SIG

*JOHN ALESI*

A real treat for spreadsheet users was a presentation by Borland's Mike Gjerstad of the soon-to-be-released **QUATTRO PRO**.

The nearly full room watched a demonstration of a new spreadsheet that may steal the thunder of Lotus' Release 3.0. This new product has the consolidation abilities of a three-dimensional spreadsheet, one of the easiest, best graphing tools, a "draw" feature, WYSIWYG preview mode, Bitstream fonts, slide-show creation and execution, and even a query facility to import and modify **PARADOX** and **dBASE** files from within the spreadsheet. And through the use of **VROOMM** (Virtual Realtime Object Oriented Memory Mapping) all this runs on a 512K XT compatible computer! The list price is \$495, but the liberal upgrade policy will make it **EXTREMELY** easy to purchase. **QUATTRO PRO** should be available in the fourth quarter of '89. Thanks to Borland and Mike Gjerstad for the great demo. After a short break, Guru, Neil Carmen, amazed us with his mastery of "linear regression" and "percent difference" functions.

Reminder: If you wish a topic to be covered at a SIG meeting, contact Neil Carmen or John Alesi.



## MONITOR X-RAYS?

*Harv Haight PE*

Since the advent of cathode-ray tube television, parents have cautioned offspring not to sit too close to the screen, advising that the "tube" emits X-Rays which will affect vision. When video monitors became an accessory to main-frame computers, and when the personal computer arrived (with its built-in monitor), this attitude surfaced more widely.

There is a basis for this fear, but - as with the conclusion that chemicals are **BAD**, because megadoses of some cause tumors in rats - common sense needs to be applied. Let's examine just what goes on in a cathode-ray tube (CRT).

In a CRT, an electrically-heated "cathode" boils off electrons into the high vacuum of the bottle. These particles of unit negative charge are drawn to the positively-charged screen. Electron flow is gated on, or is blocked off, by how negative is a wire "grid" in its path. If the grid is highly negative, no electrons pass; if its voltage is low or zero, a stream of electrons results. This stream behaves like a wire through which an electric current passes: When a permanent magnet is placed near the wire, the wire moves away from or toward the magnet. Coils outside the bottle make magnetic fields which move the electron stream from side to side, or up and down. All the inner surface of the screen is scanned by the electron beam in a pattern called a "raster." This surface is coated with chemicals which give off light when the beam hits (or don't, if the beam has been blocked by a negative grid). This on/off of the beam is called "modulation," and modulation during a scan causes the picture to be painted. Unfortunately, the impact of electrons upon the screen also generates X-rays.

# TECHNICAL CORNER

## Every Keyboard Has A Tale

Part Five

Taking a few steps forward  
and a few steps back

*John M. Goodman, Ph.D.*

As those of you who have been following this series know, I care about my computer keyboard with about the same degree of passion as "Fast Eddy" (the pool shark played by Paul Newman in the movies "Hustler" and "The Color of Money") cared about his pool cue.

In the previous installments I have told you the principles of operation of a keyboard and some of the compromises that keyboard manufacturers have had to make. I also told you about my pleasures and frustrations with the several IBM keyboard designs, and one from Chicony, and finally about my favorite keyboard up to the time of my last article on this subject, the Northgate OmniKey/102™.

I ended that article by telling you that I had heard rumors that Northgate was about to come out with yet another keyboard, this one to have 103 keys. I wondered if they were going to add the second Alt key I had wished for. And I promised to tell you whatever I learned about that or any new keyboard that might be significant.

Here, then, are my newest findings.

Northgate has come out with a new keyboard. This one, which they call the OmniKey Plus™, doesn't have the rumored 103 keys, it has 107 and is also available, I think, in a version that has 119 keys! There has been a significant amount of shifting around of the existing keys and with

several new keys it has some very interesting added capabilities.

Not all the news is good, however, at least from my perspective.

Keyboard issues can be divided into three parts. One is the matter of which keys are where—the keyboard layout. Another is how the keys operate—matters of tactile and auditory feedback. Finally there is the ever-worrisome issue of software compatibility.

Keyboard manufacturers lay out their keyboards on a grid. That is, there are typically five main rows of keys equally spaced vertically and sometimes one additional row at the very top that is spaced away from the other five. The locations of the keys along each row is also very regular. This may not be obvious since the keys in the center (or typewriter) section are not, for the most part, located directly above and below each other. The offsets are, however, very regular. The keys at either end of the rows in that section (the Ctrl, Shift and Alt keys and the Tab, Enter and Backspace keys, for example) are of an irregular size chosen to make all the rows come out to the same overall length.

Many users of the earliest IBM keyboards (the 83-key PC layout and the 84-key original AT layout) complained because the cursor motion keys were the same as the numeric keys. There are, of course, number keys across the top of the typewriter key section, but those users wanted to have the numeric keypad available for use just like on an adding machine in addition to a set of cursor motion keys. IBM allowed both functions, but only by using the Num Lock key to toggle between the two modes for the same set of keys.

IBM's response to this demand was a part of what they introduced with their so-called "Extended

Keyboard" which is now standard on all their PS/2 computers and closely resembles those on their mainframe terminals.

What they did was push the numeric keypad to the right and insert, in between it and the main section, a new cluster of keys that are just for cursor control. That was good, but what was not so good is that these keys are arranged quite differently from the way they are on the numeric keypad. The four arrow keys now form an inverted T shape and the Ins, Del, Home, End, PgUp and PgDn keys are clustered up above the arrow keys.

One nice touch on the newest IBM keyboard is that the Print Screen, Pause and Scroll Lock keys are isolated a bit from the rest by being in that sixth very top row of keys, well out of harm's way. You are not likely to hit one of them by accident.

Northgate, in their OmniKey/102™ keyboard copied these aspects of the IBM extended keyboard faithfully. In the OmniKey Plus™ they have tried to improve on that design. They have put more keys into that cursor control section between the numeric keypad and the typewriter keys and arranged them very much as they are arranged in the numeric keypad.

So far, so good.

What is not so good, though, is that to fill out that location they moved the Print Screen, Scroll Lock and Pause keys down out of the topmost row and put them in the top row of the cursor control set. This is an open invitation to hit them by accident.

Hitting Pause by accident has more than once fooled me into thinking my computer was locked up when in fact it was just waiting for me to press any other key. Hit-

ting Print Screen by accident really can make your computer lock up if your printer is not turned on.

The Northgate designers realized at least the latter danger. I know they worried about this because they have added a new special feature to their Print Screen key. You have to hit it twice in succession to let the keyboard know you really mean it!

Why couldn't they just have kept these three keys up where they were, safely away from everything else? They really aren't cursor motion keys and so don't belong in this group anyway.

The IBM extended keyboard also introduced to PC users the notion of function keys across the top and increased the number of them from 10 to 12. This was a mixed blessing. As I have previously explained, many PC program designers put functions into their programs to be activated by such compound keystrokes as Shift-F8 which are very much

easier to do when the function keys are just to the left of the typewriter key section.

In the Northgate Omni-Key/102™ the function keys have been returned to the left side (yeah!) and since there are only five rows of main keys the extra two (F11 and F12) have been put above the others in that topmost row of keys.

One more significant change introduced by the IBM extended keyboard was that the Escape key was now placed a goodly distance to the left of the first function key in the very top row. That is, it was at the very top left of the whole keyboard, again safely out of the way. I loved that. Lots of programs use a tap on the Escape key to mean "cancel current operation" or even "exit from this program." I think these are very good uses of that key, but I sure don't want to be hitting it by accident a lot, and when it is cheek-by-jowl to

the 1 key I find myself hitting it by accident all too often.

When Northgate was moving the extended function keys back to the left side they also moved the Escape key back to the left upper corner of the typewriter keys, right next to the 1 key as it had been on the original PC keyboard. Ouch!

My recommendation was and still is to put the Escape key up where the IBM extended keyboard has F1.

I am out of room now and still have a lot to tell you about this new keyboard. In the following installment(s) I will tell you about what all the new keys do as well as commenting on some issues about key function that I have not previously mentioned and discussing, at least briefly, some compatibility issues I have explored.

*This article is copyright © 1989 by John M. Goodman, Ph.D., all rights reserved.*

# GARDEN OF EDEN

IBM 11/89

Computers and Software

CORPORATE  
& SCHOOL  
P.O.'s Welcome

Business & Educational  
Software since 1982

*Printer Ribbons—All Colors—Lowest Prices—Cables, Diskettes and Accessories*

## Office Automation Products

Paradox .....	399.95
Check-It (System Analysis) .....	109.95
Spin Rite (Hard Drive Diag.) .....	49.95
PageMaker 3.0 .....	489.95
Lotus Rel. 3 .....	319.95
PathMinder (Hard Drive manager) ..	59.95
NEW PrintShop .....	44.95
Packard Bell Fax (Best Features) ..	729.95
Panasonic 1124 (2 Yr Warranty) ..	299.95
Okidata ML 380 (24 Pin Very Quiet) ..	379.95
Okidata ML 390 (24 Pin LQ) .....	489.95
256k (120 ns) Chip Set .....	39.95
Sim City (New Game) .....	39.95
DAC Easy Accounting 3.0 .....	84.95

## SIGNAL 286/16

· 100% IBM & NOVELL Compatible ·  
· 12 Mhz · 30 Meg Hard Drive · Electronic Data  
Security Lock · Perfect For: Word Processing ·  
· Bookkeeping · Data Storage · Spread Sheets ·  
Networking · DeskTop Publishing ·

\$ 669<sup>95</sup>

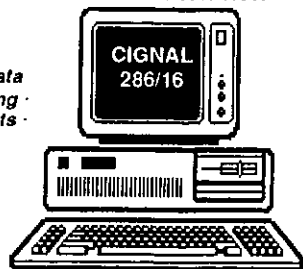
10 Mhz TURBO XT  
640k, P, S, G, Clock  
Monitor, 101 Key Bd  
360k Floppy, 165 W  
Hard Drive Optional

\$ 1149<sup>95</sup>

12 Mhz AT System  
640k, Clock  
220W, 1.2 Floppy  
P, S, & Monitor  
101 Key Board

**COLOR Systems add \$169<sup>95</sup>**  
**EGA Systems add \$399<sup>95</sup>**  
**VGA Systems add \$489<sup>95</sup>**

SEE THEM IN ACTION



30 Meg Hard Drive Incl'd

12 Months warranty  
Parts & Labor  
**30 DAY MONEY BACK  
GUARANTEE**

**Lower Prices Than · PRICE CLUB · EGGHEAD · SOFT WAREHOUSE**



If you can find a lower price  
**GARDEN OF EDEN**  
**WILL BEAT IT**  
Full details in our store

**714-841-4994**  
Fax: 848 1399  
Se Habla Ingles!

16485 Magnolia St.  
Westminster, 92683  
1 BLOCK No. OF 485 FWY



9 AM - 6PM MON-FRI ..... 9 TO 5 SAT

Egghead, IBM and Signal 286/16, Soft Warehouse & Price Club are Reg. TMs

<b>We welcome the following New Members this month:</b>	<i>Eric Bergstrom</i>	<i>Hank Kunczewski</i>
	<i>James Clymer</i>	<i>Grace Ligo</i>
	<i>Richard Counts</i>	<i>David Primrose</i>
	<i>Ken Crider</i>	<i>Carroll Richards</i>
	<i>David Erbas-White</i>	<i>Stan Sorensen</i>
	<i>Richard Herman</i>	<i>Robert Wendorf</i>
	<i>Garland Holt</i>	<i>Karen Zfaty</i>

<b>The following memberships expire in October:</b>	<i>Kathleen Blank</i>	<i>Kevin Eagle</i>	<i>Wayne Johnson</i>	<i>Lew Oriard</i>	<i>Kay Schutz</i>
	<i>James Brady</i>	<i>Sophie Edberg</i>	<i>Nick Joy</i>	<i>Anne Perrah</i>	<i>Raymond Shaw</i>
	<i>Edwin Breitenbach</i>	<i>Leon Files</i>	<i>Barbara Kincaid</i>	<i>Karin Petersen</i>	<i>Mitch Shulman</i>
	<i>Jerry Brown</i>	<i>Dorothy Foster</i>	<i>Mike Kruss</i>	<i>James Pieratt</i>	<i>Robert Siegenthaler</i>
	<i>Carl Carlson</i>	<i>Bob Foust</i>	<i>Gordon Lewin</i>	<i>Kenneth Pollock</i>	<i>Bill Singleton</i>
	<i>Jack Carnahan</i>	<i>Mark Fulton</i>	<i>Jim Mansfield</i>	<i>Mark Porterfield</i>	<i>Peter Siugals</i>
	<i>James Chester</i>	<i>Iler Ganz</i>	<i>Bill Mc Grath</i>	<i>Joseph Provost</i>	<i>Gilbert Smith</i>
	<i>Dewey Coursey</i>	<i>Patricia Ganz</i>	<i>Carl Miller</i>	<i>Allan Roberts</i>	<i>Jill Stevens</i>
	<i>William Craig</i>	<i>Richard Geasey</i>	<i>Ralph Morgan</i>	<i>Donald Roylance</i>	<i>Carl Sufall</i>
	<i>Thomas Cripps</i>	<i>Mary Gonser</i>	<i>Robert Morris</i>	<i>John Ryan</i>	<i>William Williams</i>
	<i>Burton Davidson</i>	<i>Garrel Gregg</i>	<i>Betsy Nelson</i>	<i>Michael Sagebarth</i>	<i>Dave Wyatt</i>
	<i>John Donovan</i>	<i>Jim Hornack</i>	<i>Patrick Nicolas</i>	<i>David Saleido</i>	
	<i>David Douglas</i>	<i>Jack Howe</i>	<i>Albert Ohlig</i>	<i>Steve Schiffman</i>	
	<i>Mark Artesani</i>				
	<i>Cyrus Ashari</i>				
	<i>John Bennett</i>				
	<i>Ronald Blalack</i>				

<b>The following memberships expire in November:</b>	<i>Terry Battelle</i>	<i>Alfred Dodds</i>	<i>Tom Juengel</i>	<i>Carol Peterson</i>	<i>Vernon Williams</i>
	<i>Kim Betterley</i>	<i>Dick Dunlap</i>	<i>George Kashner</i>	<i>Hal Plotkin</i>	<i>Sung Ho Yoon</i>
	<i>Jim Bonaacci</i>	<i>Dona Eley</i>	<i>Donald Lafferty</i>	<i>Richard Sobin</i>	
	<i>Roy Boorman</i>	<i>Evelyn Files</i>	<i>Si Liff</i>	<i>Margaret Sheldon</i>	
	<i>Rita Botwin</i>	<i>Janice Foster</i>	<i>Robert Marczy</i>	<i>Robert Sigmon</i>	
	<i>Frances Buzinski</i>	<i>John Gulsby</i>	<i>Tom Mc Rorie</i>	<i>Jerry Smith</i>	
	<i>George Byrd</i>	<i>Dick Hoffmann</i>	<i>Andrew McGill</i>	<i>Marcia Springer</i>	
	<i>Leamon Calloway</i>	<i>Randolph Horn</i>	<i>Bill Meadows</i>	<i>John Valero</i>	
	<i>Ted Carpenter</i>	<i>Howe Hop</i>	<i>Butch Miller</i>	<i>Dick Vinh</i>	
	<i>Brian Chwan</i>	<i>Josie Jellick</i>	<i>Steven Moeller</i>	<i>Steve Wanger</i>	
	<i>Mary Lou Curtis</i>	<i>C. Ross Jennings</i>	<i>Robert Otke</i>	<i>Morton Weinberg</i>	
	<i>Mark Davia</i>	<i>Ed Judy</i>	<i>Bill Perry</i>	<i>Carl Williams</i>	
	<i>George Alter</i>				
	<i>Jack Appleman</i>				
	<i>Gordon Austin</i>				

## OCIPUG SEPTEMBER FINANCIAL REPORT

*Jerry De Ainza, Treasurer*

OCIPUG September, 1989 Changes in Cash;

	Unrestricted Funds	Tim Smith Fund
<b>CASH BALANCE, September 1, 1989</b>	<b>\$ 11,310.90</b>	<b>\$ 4,154.04</b>
<b>CASH RECEIPTS:</b>		
Interest income	40.36	85.82
Library shareware sales	206.00	
Membership dues - New	396.00	
Membership dues - Renewal	2,106.00	
<b>Total cash receipts</b>	<b>2,748.36</b>	<b>85.82</b>
<b>CASH DISBURSEMENTS:</b>		
Accounting	450.00	
Bank charges	9.00	
Insurance - Equipment	(35.00)	
Insurance - SIG space	566.21	
Meeting - Board of Directors	27.51	
Meeting - General	150.00	
Postage - Newsletter	175.00	
Postage - Membership	56.00	
Printing - Newsletter	794.86	
Rent - SIG space	720.00	
Telephone	177.18	
<b>Total cash disbursements</b>	<b>3,090.76</b>	<b>0.00</b>
<b>NET CHANGE IN CASH BALANCE</b>	<b>(352.40)</b>	<b>85.82</b>
<b>CASH BALANCE, September 30, 1989</b>	<b>\$ 10,968.50</b>	<b>\$ 4,239.86</b>

## 1988-89 OCIPUG Board of Directors

### OFFICERS

President	Paul Curtis	774-1827
Vice President	Tom Sutro	850-0474
Secretary	Richard Sabin	968-3539
Treasurer	Jerry De Ainza	854-9557
Past President	Stan Sabin	968-7307

### DIRECTORS

Steve Burnside	1990	758-8957
David Carroll	1989	775-3130
Neil Carman	1989	964-1901
Robin Clark	1990	786-7880
Steve Dela	1989	775-8373
Dave Lorenzini	1989	751-9262
Richard Villa	1990	213-439-8110
Bonnie Ulanovsky	1990	646-5230

### NEWSLETTER STAFF

Publisher	Steven Dela	775-8373
Editor	Jean Stevens	644-1017
Production	Steve Burnside	758-8957
Technical Editor	Vacant	
SIG Guide Editor	Richard Villa	213-439-8110

## People and Numbers to Know

Programs	Dave Lorenzini	751-9262
Membership	Neil Carman	964-1901
SIG Coordinator	Dave Carroll	775-3130
Librarian	Bonnie Ulanovsky	646-5230
Bulletin Board	Richard Sabin	968-3539

## Remote Electronic Bulletin Boards

### Orange Coast IBM-PC User Group:

Public Line (1200/2400)	843-0388
Members only (1200/2400)	962-6216
WellSpring (1200/2400/9600)	856-7996
Software Exchange (1200/2400)	552-3515
The End Of The Line (1200/2400)	645-6581
AST Research (1200/2400)	852-1872
Ninja's Palace (300/1200/2400)	557-5038

**OCIPUG Information & Message Line  
714-843-2048**

## Future OCIPUG General Meeting Dates 1989 - 1990

*Our General Meetings are held on the last Saturday of each month except when there is a conflict with a major holiday (asterisked months in list below).*

<b>September 30</b>	<b>January 27</b>	<b>May 19</b>
<b>October 28</b>	<b>February 24</b>	<b>June 30</b>
<b>November 18</b>	<b>March 31</b>	<b>July 28</b>
<b>December 16</b>	<b>April 28</b>	<b>August 25</b>

# ***OCIPUG Business Sponsorship Program***

**Advanced Computer Products**  
Santa Ana (714) 558-8813

**Prodigy™ Services Company**  
Irvine (714) 852-4438

**AST Research, Inc.**  
Irvine (714) 863-1333

**Quick Technology Corporation**  
Irvine (714) 660-4948

**Garden of Eden Computers**  
Westminster (714) 841-4994

**Toshiba America, Inc.**  
Tustin (714) 730-5000

**PCR Personal Computer Rentals**  
Huntington Beach (714) 843-9262

**Western Digital Corporation**  
Irvine (714) 863-0102

The Orange Coast IBM PC User Group thanks these companies  
for their sponsorship. Their support enables us to better serve our members.

If you or your company would like more information on this program  
please call Steven Dela at 714-775-8373.

Orange Coast IBM PC User Group  
Post Office Box 6100-211  
Costa Mesa, California 92628

Postmaster: Form 3547 Requested  
Return and Forwarding Postage Guaranteed

BULK RATE U.S. Postage Paid Costa Mesa, CA 92628 Permit No. 292
---

*R 10-21-89*

**DATED MATERIAL — DO NOT DELAY**