

README.DOC

APRIL 1991

ORANGE COAST IBM PC USER GROUP

VERSION 7.4

APRIL 27TH AT 9:00 A.M.

Michelle Vranizan
Orange County Register

Michelle Vranizan is the Register's high-tech reporter, covering topics on personal computing, telecommunications, consumer electronics, and the local companies in those industries.

Bridget Cameron
Microsoft

Bridget Cameron, Product Manager of System Peripherals and Accessories group, will present Microsoft's new Mouse for laptops and notebook computers.

Chris Noble
GeoWorks

GeoWorks is the hot new GUI for 8088 (and up) computers. Chris is the Director of Product Marketing for GeoWorks. Come and see this integrated package demonstrated!

THIS ISSUE

GENERAL MEETING REPORT - MARCH	1	SIG REPORTS	8
BATCH FILE BASICS	2	MEET OUR NEW MEMBERS	9
ABC'S OF THE BBS	5	BOARD MEETING MINUTES	11
PRODUCT REVIEW - ANSEL FOR WINDOWS 3.0	6	TREASURER'S REPORT	12

README.DOC is published monthly by the ORANGE COAST IBM PC USER GROUP, P. O. Box 6100-211, Costa Mesa, CA 92628. The group's recorded message number is (714) 843-2048.

IBM is a registered trademark of the INTERNATIONAL BUSINESS MACHINES CORPORATION. Neither the User Group nor README.DOC is connected with IBM in any way.

ORANGE COAST IBM PC USER GROUP, contributors and editors of README.DOC do not assume any liability for damages arising out of the publication or non-publication of any advertisement, article, editorial, or any other item in this newsletter. All opinions expressed herein are those of the individual authors only and do not necessarily represent the opinions of the ORANGE COAST IBM PC USER GROUP, its officers, Board of Directors, the README.DOC newsletter, or its Editors.

README.DOC, Copyright© 1991 is a publication of the ORANGE COAST IBM PC USER GROUP. Unless otherwise noted, other nonprofit user groups may reprint without prior permission any of the articles appearing in this newsletter, provided that proper author, title and publication credits are given.

ADVERTISING POLICY

Members are allowed to place an advertisement for personal items in the README.DOC newsletter at no cost. There will be a limit to the amount of advertising placed in the newsletter. All submissions will be placed on a first come, first served basis.

Commercial advertisements, from members and others, are also welcome. For information concerning advertising rates and requirements, contact:

Harv Haight,
Advertising Manager
OCIPUG
P. O. Box 1589
Costa Mesa, CA 92628.

PURPOSE STATEMENT

The purpose of the ORANGE COAST IBM PC USER GROUP is to provide a forum for members to share information and experiences that will help other members obtain maximum benefit and enjoyment from the use of their IBM PC and compatible personal computers.

TRADEMARKS

The mention of the names of various products in this publication without indication of Trademark or Registered Trade Mark status does not imply that these products are not so protected by law.

ADVERTISING RATES

Full Page	\$150.00
Half Page	\$ 85.00
Quarter Page	\$ 50.00
Business Card	\$ 25.00

README.DOC NEWSLETTER STAFF

Publisher	Sunny Lockie	644-0103
Editor	Jean Stevens	644-1017
SIG Guide Editor	Richard Villa	841-6991
Advertising Manager	Harv Haight	546-0820

Past Editor:	Tom Sutro	1985-1987
Past Publishers:	Steven Dela	1987-1989
	Stephen Burnside	1989-1990

PRODUCTION

Sunny Lockie
Richard Villa

CONTRIBUTORS

David Black
Terry Currier
Harv Haight
Rac Hark
Sunny Lockie
George Mefferd
Bob Ottke
Wendy Sarrett
Michael Springer
Jean Stevens
Richard Villa
Audrey Wolden

Camera ready copy produced with:

80386-33 WORD-tek	Publishers PaintBrush
HP LaserJet III	Ventura Publisher 3.0
Pacific Page Postscript 4.0 with PacificType	Corel Draw 2.0

Printing by Champion Graphics, Santa Ana.

README.DOC is published monthly. A subscription is included with all paid memberships in the Orange Coast IBM PC Users Group.

Address all inquiries and address changes to: README.DOC, P. O. Box 6100-211, Costa Mesa, CA 92628

GUIDELINES FOR README.DOC ARTICLE SUBMISSIONS

All items submitted for publication are subject to editing. We reserve the right to refuse any material submitted for publication.

Send all submissions to the Editor, on or before the deadline listed below, using one of the following formats:

1. **UPLOAD** to the Bulletin Board, indicating the format by extension, such as: ASCII.TXT, MSWord.WRD, WordPerfect.WP.

2. **5 1/4" DISK** mailed to the Editor in time to meet the deadline: P. O. Box 8224, Newport Beach, CA 92658.

3. **HARD COPY** is acceptable only if typed and double-spaced.

DEADLINE FOR ALL SUBMISSIONS WILL ALWAYS BE 12 MIDNIGHT ON THE SATURDAY FOLLOWING THE GENERAL MEETING.

General Meeting Report

Harv Haight

Prior to this 73rd General Meeting, from 8:45 to 9:15 a.m., John Lunsford fielded questions from the audience in a wide-ranging Random Access. After a formal opening by President Steve Burnside, Rich Sabin introduced our main speaker, Dave Brower, WordPerfect's Regional Representative.

After WordPerfect's traditional passing out of M & M candy to the audience, Dave described briefly LetterPerfect, a released short form of WordPerfect Version 5.1 (\$229 list). At the end of the meeting, Dave showed a video demonstrating LetterPerfect. His primary topic, however, was WordPerfect for Windows, due for formal release in June/July.

WordPerfect for Windows requires an 80386 (SX or DX) or 80486 machine, with a minimum of two megabytes of RAM. No conversion is necessary between WordPerfect 5.1 files and those from the Windows version. Quicklist shows a customized list of files which can be previewed in a window and then retrieved. A mouse drags margins, tabs, and alignment along a ruler at the top of the page. Fonts, style, line spacing, justification, and columns are pulled down from a menu strip by a single mouse tap; a double tap presents a dialog box. Graphics are readily invoked and moved or rotated; there is no built-in graphics editor.

The Tables feature of this program and version 5.1 make inclusion in text easy, and allow linkage to spreadsheets, en toto or by range. Dynamic data exchange is supported.

Fonts can be previewed before incorporating. HP Laserjet III scaleable fonts are supported. Printer drivers from Versions 5.1 are supported and those from Windows 3.0 can also be used. Adobe scripts can be used and kerning is supported. Note, however, that the WordPerfect drivers will not work on other Windows programs.

Button Bars are part of WordPerfect for Windows, and can be personalized and saved; they can include macros. WordPerfect macro language has been enhanced to allow Windows features; macros are source-independent and tokenized, but are not the same as those in version 5.1. Partial conversion is under consideration. Mail-merge and handling of envelopes uses techniques identical with those of version 5.1. Up to eight levels of outline are possible.

Before a break, Steve requested that individuals pick up personal trash, both at the General Meeting and at the SIG space. At 10:40, after the break, Steve spoke of a special listing sought by README.DOC Editor Jean Stevens, for club members willing to give phone assistance to other members with computer related problems. He also thanked Ben LeGare for contributing more memory for the 386 machine donated last month by Garden of Eden. Before resumption of the technical program, SIG leaders commented on subjects for, and changes in, scheduled meetings.

Dave Lorenzini and son, Joe, then demonstrated shareware utilities for Windows 3.0 (talented Joe has created much of the

graphics used by OCIPUG, including the club logo). GATLING produces noise of shots and bullet holes on the display; CHANGE CURSOR does its thing on a grid; ALMANAC supports a calendar, personal planner, and appropriate alarms.

Finally, Vice President Richard Villa showed us several commercial programs for Windows 3.0 use. BECKERTOOLS 2.0, by Abacus, does everything that Windows 3.0 File Manager does, but better, and version 2.0 can launch programs. Icons are small but are explained in a status line at the bottom of the page. Richard is now working with the beta release from Abacus of PC VIRUS SECURE. Bantam's book, *Windows 3.0 Power Tools*, comes with shareware disks; graphics-based "Oriol" batch language is included. Also on disk are INTERMISSION, a screen-saver with many special features, and CURTAIN CALL, a wallpaper manager whose files can be saved outside Windows.

The raffle included many programs and books; our thanks to speakers and other individuals who supplied them. Winners are shown elsewhere. ■

BATCH FILE BASICS

Michael Springer

A very handy utility appeared on the OCIPUG BBS two weeks ago. I found this so useful that I am breaking the continuity of Batch File Basics to present a batch file solution to automating this utility. (What continuity? you say. Be assured, there IS method in my madness.) We will get back to environmental variables as soon as practical.

SUBZIP provides an easy way to decrease the hard disk space occupied by files. 50% or more reduction in disk space for each application is not unusual. SUBZIP works as follows: 1) a branch of a directory tree (program and data subdirectories) is compressed into one file; 2) when needed, this file is uncompressed (but remains on the hard drive) to the original state to run the program; 3) when finished using the program, the compressed file is updated with all files that have been changed or created; 4) the uncompressed files are deleted from the hard disk. The time penalty for doing all this is small, but I would not do this to an application that I use daily. Batch files make the operation really easy by fully automating the process for each program or application that is "subzipped." The data that SUBZIP needs is provided by the batch file.

SUBZIP needs two shareware programs, PKZIP/PKUNZIP and LIST, to operate. To take full advantage of batch file operation, we will add INSTALL, REMOVENW - a variation of REMOVE, and KEY-FAKE, all freeware utilities from PC Magazine. KEY-FAKE will be used to provide key presses that SUBZIP normally gets from the keyboard. INSTALL and REMOVENW act as "TSR Teflon" (term stolen from John Goodman) and provide a way to unclutter low DOS memory.

SUBZIP and DELDIR (from SUBZIP11), PKZIP, PKUNZIP, LIST, INSTALL, REMOVENW and KEY-FAKE must be copied to a directory which is listed in the PATH statement. C:\UTIL is a good choice. Read the documentation from SUBZIP and use SUBZIP manually to get a feel for how it works. Then, note all the keystrokes that you must provide for successful operation. These keystrokes will be supplied by KEY-FAKE.

Let's add the use of SUBZIP to the WORDMAKR.BAT file that was explained last month.

```
echo off
set oldpath=%path%
set oldprompt=%prompt%
set wordmakr=lcd
path=d:\wm;c:\dos;c:\util;c:\
prompt=Now in WORDMAKR Shell, type
EXIT to return - $P $G (one line)
d:
cd\
install
```

```
key-fake "N" "WORDMAKR" 13 "E"
subzip
removenw
cd wm\data
wordmakr
cd \
install
key-fake "S" "WORDMAKR" 13 13 "E"
subzip
removenw
c:
set path=%oldpath%
set prompt=%oldprompt%
set oldpath=
set oldprompt=
set wordmakr=
```

The first addition —

```
install
key-fake "N" "WORDMAKR" 13 "E"
subzip
removenw
```

causes SUBZIP to uncompress the application. The keystrokes to make SUBZIP work are provided by KEY-FAKE. INSTALL and REMOVENW are the "TSR Teflon" which make possible removing all traces of KEY-FAKE before the application is actually started.

The second addition —

```
install
key-fake "S" "WORDMAKR" 13 13 "E"
subzip
removenw
```

causes SUBZIP to update the compressed file and to delete all files. Again, the keystrokes to make SUBZIP work are provided by KEY-FAKE and the "TSR Teflon" removes all traces of KEY-FAKE.

KEY-FAKE is an example of a utility used to enhance batch files. It does something that DOS does not do. It feeds phony keystrokes to SUBZIP. Regular characters are enclosed in quotes. Special characters are specified by their ASCII value. 13 represents a press of the ENTER key. KEY-FAKE installs itself as a TSR and watches for SUBZIP to ask for input. One way to remove KEY-FAKE from memory is to reboot the computer. Of course, this would interfere with the operation of the batch file, so a less drastic technique is required. INSTALL and REMOVENW make removal of KEY-FAKE possible under control of the batch file. Download SUBZIP11.ZIP, PKZ110.EXE, LIST75F.ZIP and BFB10.ZIP from the OCIPUG BBS to get all the files that are used in this article. Full documentation for the PC Magazine files is contained in the book PC MAGAZINE DOS POWERTOOLS by Paul Somerson.

...continued on page 3

...continued from page 2

KEY-FAKE (with docs) has been included in some of the PC Magazine utility disks. INSTALL and REMOVE first appeared in PC Magazine, Volume 6, Number 14. I have not seen them on any of the PC Magazine utility disks. Though I have not tried them, the shareware programs, MARK and RELEASE (part of TSRCOM28.ZIP), probably can be substituted for INSTALL and REMOVENW.

Please remember to support your shareware authors. ■



...for knowledgeable men and women to join the OCIPUG SUPPORT GROUP. It's a telephone help line for members, enabling them to pick up the phone and dial another member for on-line help. If you are interested please call me at (714) 644-1017 or leave me a message on the BBS. Thank you!

Jean Stevens, Editor

We Have An UNFAIR Business ADVANTAGE. We Know What We're doing

GARDEN OF EDEN
Computers and Software

CORPORATE & SCHOOL P.O.'s Welcome

Business & Educational Software since 1982

IBM 491

Printer Ribbons-All Colors-Lowest Prices Cables, Diskettes and Accessories

OCIPUG MEMBERS PRICES

SpinRite II.....	69.95
GEO Ensemble (windows for XT's)	119.95
PageMaker 3.01	489.95
PathMinder (HDD Manager/Menu)	59.95
Label Pro	59.95
Canon LBP-4 Laser Printer	789.95
Publishers Power Pack 2.0	54.95
Hijaak vers 2.0	129.95
SIM Earth	49.95
Handy Scanner 3000 Plus	189.95
Virex PC (Finds and Kills the Flu)	74.95
The Spanish Ass'nt (Translator)	69.95
Okidata 380 (24Pin LQ)	319.95

Hand Made COMPUTERS



Hard Drives, Tape Backups and Memory Upgrades; System Repairs and Service at Very REASONABLE RATES

int_{el} 386 SX
A Zillion Percent Better

- 386 16 mhz SX 689.00
- 386 25 mhz SX 789.00
- 386 25 mhz DX 958.00
- 386 25 w/64 k cache 1149.00
- 386 33 w/64 k cache 1279.00

1 Yr. Warranty Parts & Labor

386 SX-16; 1 Meg, .29 VCA, 1.2FDD, 44 Meg HDD, 101 KB
\$ 1351⁰⁰

SAME LOCATION SINCE JULY 31, 1983 - 7 YEARS - 9 MONTHS

!!! We Match all **SOFT WAREHOUSE** software prices !!!



If you can find a lower price **GARDEN OF EDEN WILL BEAT IT**
Full details in our store

714-841-4994

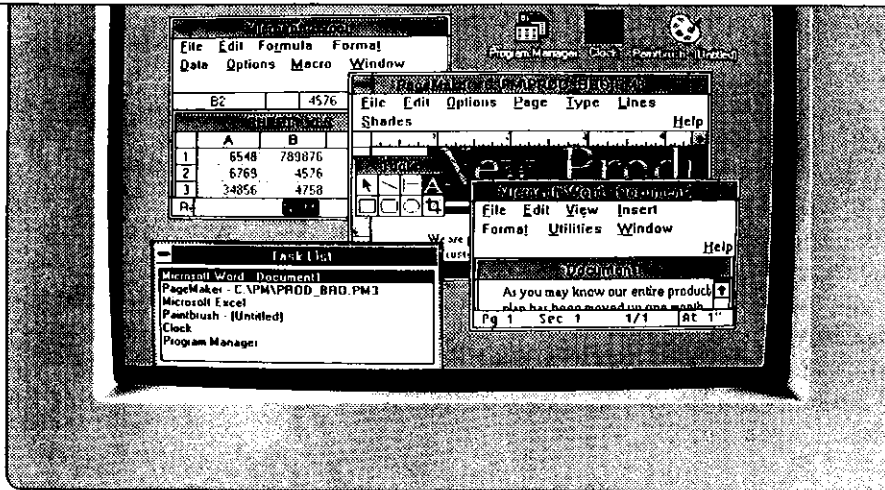
Fax: 848 1399
Se Habla Ingles!

16485 Magnolia St.
Westminster, 92683

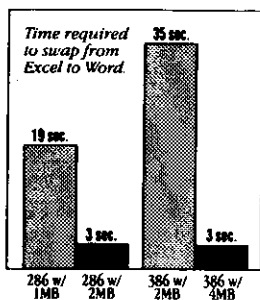
1 BLOCK N. OF 405 FWY
9 AM - 6PM MON-FRI.....10 TO 5 SAT



Soft Warehouse, IBM, Intel and Signal are Reg. TMs



Open more Windows with an Above™ Board.



Above Board memory means faster access to more Windows applications.

adding at least 2MB to run Word for Windows[®]—at least 4MB if you're on a network or use large applications like Excel[®]. And, without additional memory, you'll waste time waiting to access applications, fonts, and graphics.

The wraps have finally come off. Now that Windows[®] 3.0 is out, you can switch to a graphical PC environment and handle multitasking applications with ease. Right?

Actually, as you add Windows' applications, memory requirements increase. For example, Microsoft[®] recommends

The solution? An Intel[®] Above[™] Board—voted number one in *PC Week's* Corporate Satisfaction Poll two years in a row. Above Boards provide up to 14MB¹ of memory and are guaranteed compatible with Windows and hundreds of other DOS packages.

To find out how Above Boards can open more Windows for you, call Intel today at (800) 538-3373. To have information faxed directly to you, call (800) 525-3019 and request Document #9959.

Because once you get an Above Board, using Windows is an open and shut case.



¹With 6MB PageLock memory option. Timing performance test conducted using an IBM PS/2 Model 50 and Above Board 2 Plus running Windows 3.0 in standard mode, and an IBM PS/2 Model 70 and Above Board MCA2 running Windows 3.0 in enhanced mode. © 1990 Intel Corporation. Above and 986 are trademarks of Intel Corporation. Windows, Word for Windows and Excel are trademarks of Microsoft Corp.

ABC'S of the BBS

Bob Otke

Shareware offers a great many very useful programs of all sorts. We have noted in the past that many of the excellent and well developed programs have progressed from the shareware arena to being highly successful commercial products. One of those with which we are all familiar is ProComm. Another is Steve Gibson's SpinRite. Recently, a menu program that I consider to be the best menuing system of all, AutoMenu, has made that same move. AutoMenu v4.7 is still available on the BBS as AUTO47.ZIP.

AutoMenu, in effect, creates simple batch files for you. Once you have it set up, you need no longer remember the DOS syntax to load and execute programs. You can even set it up to do an automatic virus scan of a particular directory when you leave it. Tie it in with MARK and RELEASE, a couple of small utilities, and you can load and drop TSRs at will. It will allow as many sub-menus as you would like. Set up one for your communications-related programs, one for your collection of utilities, another for your spreadsheets and financial programs, for example. I even use AutoMenu to load Windows, and take me back to the menu program when I exit Windows. It is a highly versatile program that can make computer life much easier for you. The default colors are hideous, but, fortunately, you have a wide range of choices.

A program that has not yet made the commercial move is RECONFIG. Let's say that you frequently work with several different program

groups. Desktop publishing, as one example, where you need a big ram-disk, fonts, and lots of other stuff loaded. That same afternoon, you need to work with spreadsheets, word processors, and several TSRs that you find handy. Your wife is a GUI fan, and has to load several drivers along with Windows, and doesn't like the idea that your print cache interferes with PrntScr. Mess, isn't it? Everyone needs a different CONFIG.SYS and AUTOEXEC.BAT. If you do a lot of downloading, you may want to load and run a program such as SENTRY from your autoexec. When you run SpinRite, you need a clean system, with no TSRs and a minimum of drivers.

There is a solution! RECONFIG. This is a small, efficient program that allows you to set up as many AUTOEXEC.BAT and CONFIG.SYS files as you would like, and switch among them at will. Just call up Reconfig, select DICK or JANE or NORMAL or MINIMAL or DESKTOP, reboot, and you've got it. This program is on the BBS as RECONFIG.ZIP.

Now we come to the main point of this article. These two programs work together to make an unbeatable team when you must make a variety of changes for different users or different functions. Dick can have his personal setup, with his own menu system, Jane can have hers, and you can add as many others as you like, with the entire system configured exactly as desired. Jane's autoexec, for example, can be set up to load Win-

dows directly, or she can load her own personal menu, and go to Windows through that. Dick's CONFIG.SYS can load his big ram-disk and all the fonts he needs for the desktop session.

Sometimes, when you combine two separate programs to work closely together, you can go far beyond the potentialities of either alone. Try these two, and adapt them to your own uses. If you come up with some novel uses that you would be willing to share with others, how about leaving a message on the BBS? It would be welcome....

NEW ON THE BBS IN MARCH:

March saw the addition of 137 new shareware uploads on your BBS. As usual, Dick Gerber was the source of most.

In addition to the usual collection of upgrades, zipfile manager shells, virus scanners, etc., we have some new goodies that are worth a try:

ZC102.ZIP ZipChunker. A handy program that allows the user to take an existing zipfile and create subsets of its contents.

BIGDES.ZIP Big Desk. A Windows 3.0 program that allows you to increase the size (display) of your desktop.

TLX312-?.ZIP Three-disk set of Telix communications software, v.3.12. (For ? above, read 1, 2, and 3.)

ICNVWR.ZIP Magellan 2.0 viewer for Windows 3.0 icons. Just unzip this into the Magellan sub-directory. ■

ANSEL FOR WINDOWS 3.0

David Black

Several years ago, hand scanners for PCs first began to appear. They provided a cheap, low-cost method for scanning small images for use in desktop publishing and other applications. However, the first models suffered from low resolution, poor quality, and a narrow scanning width, not to mention the poor software included. Nevertheless, scanners soon began to improve. The resolutions and colors that were scanned improved, but for the most part, the software included still left much to be desired.

About 3 years ago, I purchased Logitech's second revision of their popular ScanMan. It would scan up to 400 dpi in black and white, and came with their PaintShow software for scanning. After the ScanMan Plus was released, I upgraded to dithering capability and a more stable design, but was still stuck with the same software. Then about 6 months ago, Logitech released their new ScanMan/256 and accompanying Ansel software. This whole project started when the people at Logitech faced upgrading their small WinScan utility to work under Windows 3.0. As they began to add features they reached a point where it became a complete editing package. This decision was also made to accommodate the new ScanMan/256 that Logitech was developing at the time. Logitech decided not to offer a low-cost upgrade to the ScanMan/256 for users of the older ScanMan, as

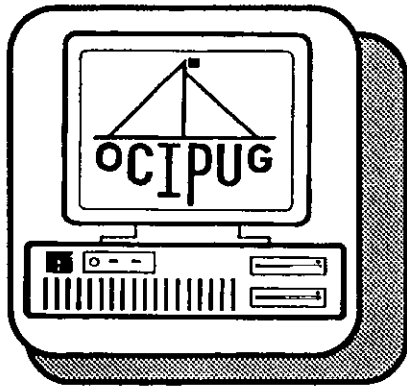
this new model used both a different interface card and scanning head. To appease the complaints of these users, Logitech decided to offer them the Ansel software at a discount price of \$40. Being an avid Windows fan, I immediately accepted Logitech's offer and a few weeks later the software arrived.

The software itself comes either on two 360K 5.25" disks or one 720K 3.5" disk, and includes a spiral bound manual (nice touch). The software requires a machine capable of running Windows 3.0, and currently supports only Logitech scanners for scanning from the program. To install Ansel, simply start up Windows and run the installation program on disk 1. This will copy the files to your hard disk, edit your WIN.INI and SYSTEM.INI files, and place the program in one of the Program Manager groups you specify. Ansel also includes a new version (v2.0) of the Logitech Scanner Driver on the disks. When you run the program and have a VGA or SuperVGA system, Ansel will take control of your on-screen palette and change it to a gray scale mode while the Ansel window is in the foreground. This is to make on screen editing much easier. Any gray scales that can't be shown in a solid color will be represented by a dither pattern. You can disable this function, in which Ansel will simply use the two grays available and dither most of the grays. If you are lucky enough to be running Windows with a 256 color driver, Ansel

will use all 64 gray shades in the palette, while not touching any of the other colors.

Most of the editing tools that you would expect are here on the menus and in the tool palette. You can rotate, lighten/darken, deskew (more on this later), flip, and scale images globally, as well as edit pixels individually. You can also scan two halves of a page and stitch them together interactively on screen. A few drawing tools are here, but not many. You can draw rectangles, lines, polygons, as well as draw, erase, and fill an area. You can zoom in and out to make the image easier to work on, and use the pencil tool to lighten/darken individual pixels. After you are done working on the image, you can save it in numerous formats and print it. An extensive on line help system is also included. All of the options are selectable from the pull down menus, and the option to have a toolbox and palettes for such things as shade of gray and line styles, is also available. The deskew feature allows you to take an image that wasn't scanned quite right, and straighten it out.


You can bring in almost any image into Ansel and edit it, but in that mode the results can be mediocre. There is much better software made for that specific purpose. It is when you combine Ansel with a Logitech scanner that it really shines. Now I only have a ScanMan Plus, but this software added many new features to my old hardware. First, it abolished the



Orange Coast IBM PC User Group SIG GUIDE

A Calendar of Meetings & Events
published by Richard Villa

For more information on membership, write to OCIPUG at PO Box 6100-211,
Costa Mesa, CA 92628. Call Voice - 714/843-2048 or BBS - 714/843-0388

	SUN	MON	TUE	WED	THU	FRI	SAT
APR							New Users 9 AM
	28	29 OCIPUG Board Meeting 6:30 PM	30 Real Estate 8 AM	1 Windows 3	2 Modem	3	4 DOS 1 PM <i>Workshop 11:50</i>
MAY	5	6	7 <i>Open House</i> Spreadsheet	8 Games Program Committee	9 <i>Workshop</i>	10	11 Programming 9 AM OS/2 1:15 PM
	12	13 Word Perfect	14 Database	15	16 Corel Draw 6:30 PM @ Graphix Zone	17	18 Beginners 9 AM Q & A 1 PM
	19	20 Genealogy @ Family History Center	21 BBS	22	23 Hardware	24 Geo- Works	25 9AM - OCIPUG General Meeting O.C.C. Science Hall
	26	27 MEMORIAL DAY 	28 Real Estate 8 AM Personal Finance	29 OCIPUG Board Meeting 6:30 PM	30	31	

All Special Interest Groups (SIG's) are held from 7 PM to 10 PM at our SIG SPACE,
located at 17632 Metzler Lane, Suite 211, Huntington Beach unless otherwise listed.

BEGINNERS

Co-SIG Leader: Robin Clark 714/786-7880
Co-SIG Leader: Terry Currier 714/774-2018

This SIG will teach the very basics of computers. If you're new to computing, come and learn!

BBS

SIG Leader: Bob Ottke 714/759-1515

Monthly work party on the BBS. Meet in office area of SIG SPACE.

CAD/GRAPHICS

SIG Leader: David Carroll 714/775-3130
Designated Guru: Dave Lorenzini 714/496-3050

This SIG covers hardware and software products in both computer aided design and graphics. At the May meeting we will demonstrate the latest version of Grasp Version 4, a great program for producing distributable presentations. The presentation will be for both new and experienced users.

COREL DRAW/VENTURA

SIG Leader: Steve Burnside 714/722-0327
Asst. SIG Leader: Sunny Lockie 714/644-0103

This SIG will cover intermediate and advanced topics relating to both *Ventura Publisher* and *Corel DRAW!* At the May meeting we will present Corel's CD ROM Player. Please come with your questions. Meeting starts at 6:30 PM.

Graphix Zone, 38 Corporate Park, Irvine - Near Jamboree & Alton Pkwy.

DATABASE

SIG Leader: Bob Schmiedeke 714/536-1178

This SIG discusses various database programs, specializing in dBASE. At the May meeting Steve Silverwood of Ashton-Tate will present how to get maximum use out of the Control Center Booster.

DOS and LANGUAGES

SIG Leader: Joe Zebrowski 714/545-0889
Designated Guru: John Goodman 714/895-3195

Come to this group to learn more about how your PC works and how to get it to do what you want. This SIG is about the program you use everyday: DOS. Also about languages (e.g. BASIC) & other system issues. At the May meeting John Goodman will present the Norton Utilities.

3RD SAT

GAMES

SIG Leader: Manny Rothstein 714/960-7436

New SIG! At the May meeting, Johnny Wilson of Computer Gaming World will discuss computer gaming in 1991. He is author of the best selling "Sim City Planning Commission Handbook".

2ND WED

3RD TUE

GENEALOGY

SIG Leader: Stan Sabin 714/968-7307

For beginners to experts. If you know a little about Genealogy or a lot this SIG is for you. At the May meeting we will learn to check social security records and CD ROM records. Please bring your questions. Everyone welcome!

Family History Center, 8702 Atlanta, Huntington Beach

3RD MON

2ND THU

GGEOWORKS

SIG Leader: Bob Basaraba 714/559-6539

NEW SIG! This SIG covers the new product *GeoWorks Ensemble*. At the May meeting we will show *GeoWrite* and *GeoDraw*.

4TH FRI

HARDWARE

SIG Leader: Bob Basaraba 714/559-6539

This SIG is one of the most popular, judging by the strong attendance. Check the HOT-LINE for the topic for May.

4TH THU

MODEM

SIG Leader: Bob Ottke 714/759-1515
Designated Guru: Rich Sabin 714/965-6734

Reach out and access the whole world of information through telecommunications. Check the HOT-LINE for the topic for May. Come and random access with us.

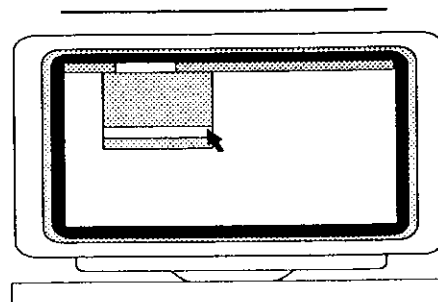
1ST THU

NEW USER/NEW MEMBER

SIG Leader: John Lunsford 714/995-0947

This is the best SIG to attend first. The meetings run on a 4-month cycle and this month is number ONE in the cycle. You may start at any point in the cycle.

1ST SAT



ATTEND A SIG MEETING THIS MONTH - FIND OUT WHAT'S HOT!

OS/2

SIG Leader: Dave Lorenzini 714/496-3050
 Come learn about what OS/2 is all about and what this new operating system can do for you. Check the HOT-LINE for the topic for May.

PERSONAL FINANCE

SIG Leader: Max Lockie 714/644-0103
 This SIG discusses the various financial packages for the PC. At the May meeting we will discuss Managing Your Money.

PROGRAMMING

SIG Leader: Wendy Sarrett 714/733-9906
 This SIG covers various aspects of programming and programming languages. In May we will have Bill Phillips discussing assembly language programming.

Q & A

SIG Leader: Terry Currier 714/774-2018
 Come and learn about this popular database and word processing program. At the May meeting we will discuss lookup functions.

REAL ESTATE

Contact Person: Jim Dickerson 714/960-9691
 Contact Person: Tom Sutro 714/754-7045

Jointly sponsored by OCIPUG and several local Boards of Realtors, this is one of our largest SIG's. Check the HOT-LINE for the topic of the month. (Coffee at 7:30 AM).

Newport Harbor - Costa Mesa Board of Realtors Boardatorium, 401 North Newport Blvd., Newport Beach.

SPREADSHEET

SIG Leader: John Alesi 714/770-1130
 Designated Guru: Neil Carman 714/964-1901

This group covers Lotus 123 and other popular spreadsheet programs, including shareware products, for both beginners and advanced users. Check the HOT-LINE for the topic for May.

WINDOWS 3

SIG Leader: Richard Villa 714/841-6991
 Asst. SIG Leader: Steve Burnside 714/722-0327

This SIG covers software for Microsoft Windows 3.0 during the first half, and specializes in PageMaker 4.0 and other advanced topics in the last half. At the May meeting Steve Burnside will present Arts & Letters 3.1 and BeckerTools for Windows 2.0.

2ND SAT

4TH TUE

2ND SAT

3RD SAT

LAST TUE

1ST TUE

1ST WED

WORD

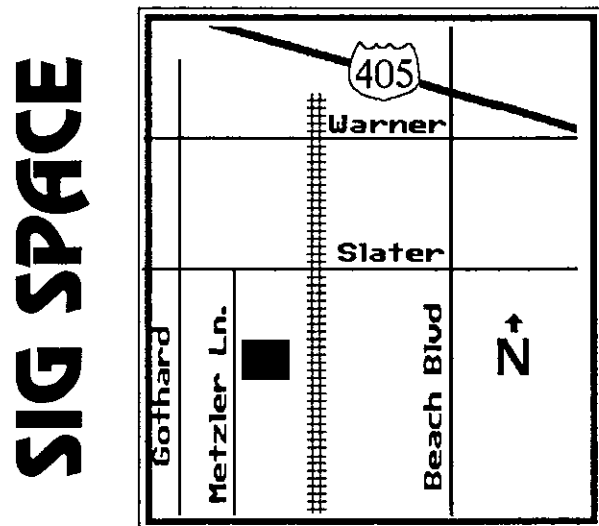
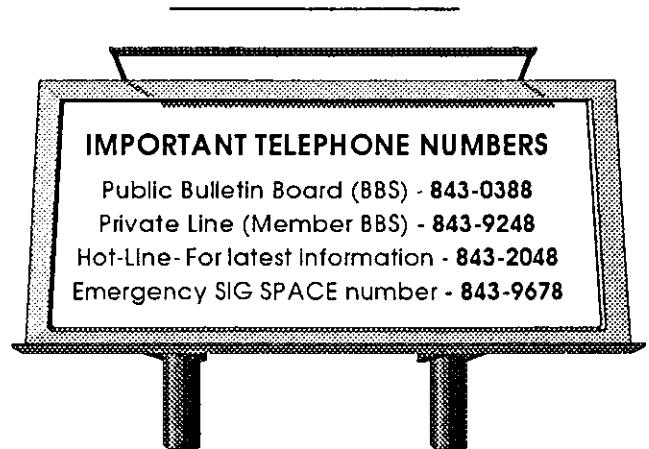
SIG Leader: Winston Jewson 714/544-4330
 Microsoft Contact: Dave Lorenzini 714/496-3050
 Microsoft Word 5.5 is a powerful and popular word processing package. We will not meet in May to celebrate the Memorial Day holiday. See you in June!

WORDPERFECT

SIG Leader: Susan Novak 213/594-4144
 W-213/491-3081
 Contact Person: Ben Swanson 213/865-4555
 Come and learn about this popular word processing package. At the May meeting we will discuss the use of styles in WordPerfect 5.1.

4TH MON

2ND MON



**17632 Metzler Lane, Suite 211
 Huntington Beach**

ATTEND A SIG MEETING THIS MONTH - FIND OUT WHAT'S HOT!

Saturday April 27th, 1991 - 9:00 AM to Noon

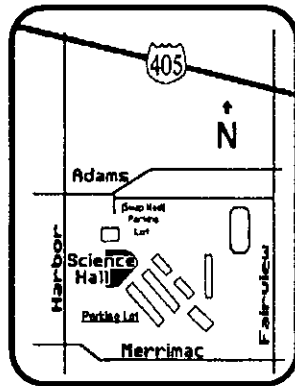
GENERAL MEETING

High -Tech Newspaper Reporting
Michelle Vranizan, Orange County Register
Microsoft Deluxe Mouse
Bridgette Cameron, Microsoft Corporation
GeoWorks
Chris Noble, Geoworks

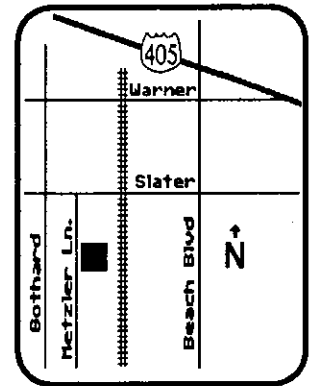
⇒ 8:40 to 9:00 AM - Random Access!

MEETING LOCATIONS

Orange Coast College
Costa Mesa
2701 Fairview Rd.
General Meeting:
Science Hall (next to
Chemistry Bldg.)
Parking in campus lots
available off Adams or
Merrimac.



SIG Space
Huntington Beach
17632 Metzler
Lane, Suite 211
SIG Meetings:
Take elevator to 2nd
floor.
Parking in lot or on
street



MEMBERSHIP INFORMATION

Orange Coast IBM PC User Group (OCIPUG) was formed in 1985, and has become one of the largest and most respected User Groups in the country.

OCIPUG, a non-profit corporation, is an all-volunteer organization which provides PC enthusiasts with an opportunity to gain knowledge and gives assistance to those who need it.

Membership includes:

- ✓ subscription to README.DOC, the monthly newsletter published by OCIPUG
- ✓ discounts on Public Domain, Shareware and User Supported software
- ✓ access to the OCIPUG RBBS private telephone line
- ✓ eligibility for monthly raffle at General Meeting

If you would like to become an OCIPUG member please call 714/843-2048 and request an application for membership, or write: OCIPUG, PO Box 6100-211, Costa Mesa, CA 92628-6100.

OCIPUG SIG GUIDE camera ready copy produced with: Microsoft Windows 3.0, Aldus PageMaker 4.0 Corel Draw! 2.0 & Paintbrush using an HP LaserJet III with Pacific Data Product's PacificPage 4.0 PostScript-compatible cartridge, including Bitstream & Adobe fonts. Graphic illustrations by Richard Villa, Steve Burnside, & David Carroll.

Keeper of the Calendar: Richard Villa - 714/841-6991 - Deadline for June Calendar: Friday May 10th

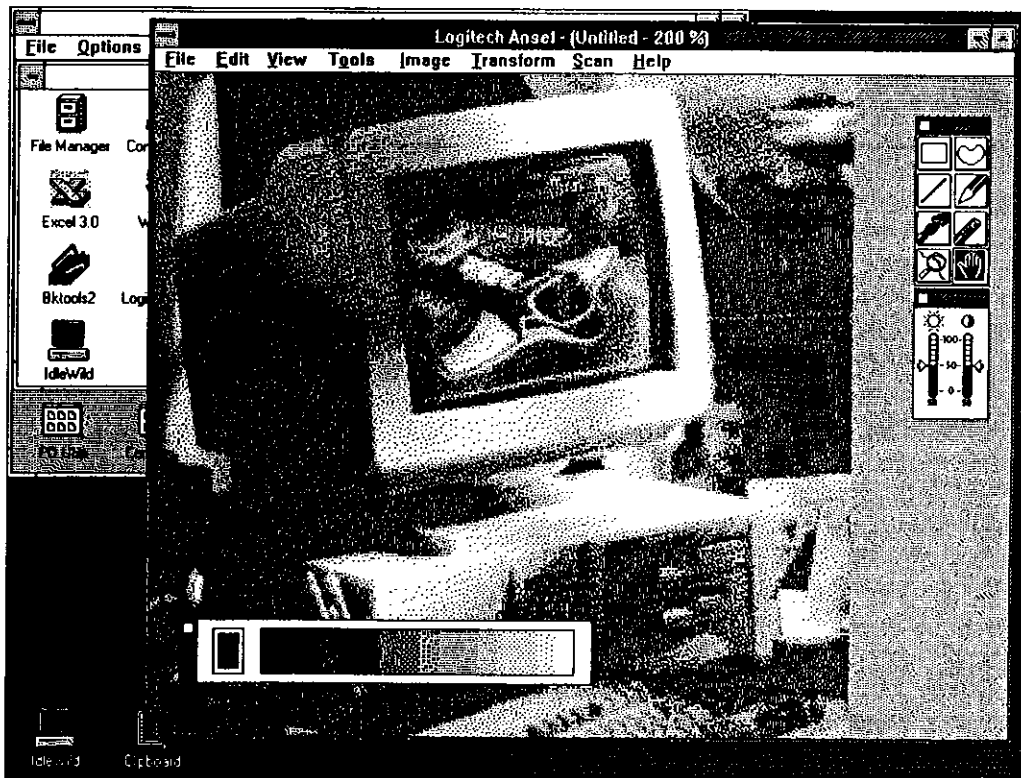
The best Hand Scanner software yet?

previous limits on scanning in the higher resolutions. With the older PaintShow software I could only scan 2-3 inches in 400 dpi mode, but because of the port to Windows 3.0, the length that can be scanned is limited only by available disk space. I can also interactively set how much of the scanning width I want to use. Both of these features are useful, but one of the truly amazing features it added to

my ScanMan was the ability to do limited gray scale scanning. If I set the scanner for a dithering mode, and the software for gray scale scanning, I can actually do 16-64 shade gray scale scanning. This capability made all the difference in what I scanned and used, as now I could get a good quality reproduction of an image on my IIP.

With all of the above features, Ansel was well worth the upgrade

price of \$40, and certainly is a powerful tool even with the older Logitech scanners. As a stand alone editing package however, it is nothing to write home about, having the basics plus a few features more. If you have an older ScanMan, and run Windows 3.0, by all means get this software as it will make a valuable addition to your software collection. ■



DOS SIG REPORT

Audrey Wolden

At the March 2nd DOS SIG meeting, Bob Basaraba gave a demonstration of GEOWORKS ENSEMBLE. He used two computers, an 8088 and an 80386, to demonstrate the features and capabilities of GEOWORKS ENSEMBLE compared to WINDOWS. GEOWORKS has the same features as WINDOWS with full editing on the screen, but is easier to use, especially for beginners. You can make banners, turn objects around, move them about, including juxtaposing at many levels, superimpose them, change colors and patterns, edit the text or the drawing, etc. After you turn it off, it comes back to the exact place where you left off.

GeoManager, manages your files and windows easier and faster than WINDOWS. It comes with a screen blinker, and gives you options, without your having to know in advance what you want. You don't need complicated BAT files as with DOS. Easier to use mouse, as well. Bob has run it with PCSHELL, although he was warned not to. Other features include different fonts visible on the screen, each one of the windows represents a subdirectory, unlike WINDOWS. You get the name of the location where you are; i.e., Volume C, then the path, how many bytes you have, and how much free space—12 items in all. You can copy from C drive to the copy directory by holding down the control key. You can make windows smaller or larger to view a portion of the subdirectory or more of it. Pull-down menus go away when you are finished using them. You can move the menu anywhere you wish. Fonts may be changed and viewed on the monitor. You can set up your environment any way you wish. All it takes is a double click of the mouse. With GeoDraw you can edit your input, as opposed to Paintbrush. Another feature is ENSEMBLE's Modem service, which has a free part that tells you what's new in on-line support. The program requires 512K RAM, DOS 2.0 or higher, a hard disk with at least 3MB free space, a mouse, and is compatible with over 300 printers.

George Colburn and Bunny Garrison were winners of the drawing for give-aways provided by GeoWorks.

Random Access was conducted by John Goodman: In AUTOEXEC.BAT, add Pause to read CONFIG.SYS (or Control S or Control Numlock).

SHARE was designed for DOS 3.1 to keep two users who are simultaneously using it from trashing each other's work. If one saves his changes, the other person's are gone. If first person has read-and-

write access, the second cannot use it.

CPM-UNIX produced DOS, using file control blocks. The newer way is file handles where you have a table about files and an index number; operating system controls the table. Beyond 32 MB you need a bigger space and your pointer...no problem for newer system. With DOS 4.0 SHARE builds file control blocks. SHARE should be loaded for larger media message...because you may have to do it yourself. May not be enough space on 640K. Always make every partition at least 16 and not more than 32. Other systems such as DOS 5.0 takes care of SHARE automatically.

Run CHKDSK with no parameters, such as "/F," first. The most common problem is "so many lost clusters in so many chains." /F gives it permission to make corrections automatically. Some things it asks you about and others it fixes without asking (and should not). Let CHKDSK get rid of lost clusters. Don't trust CHECKIT...When you get message "Abort, Retry, Fail" take out the disk and use a new one. Caveat: Don't run CHKDSK/F in WINDOWS or GEOWORKS as it makes modifications. ■

Q&A SIG REPORT

Terry Currier



For those of you who missed it, the March 18, 1991 issue of *Info-world* had a news article about Q&A 4.0. This was the first time they have said anything publicly about the upgrade. In an interview with Robert P. Lee, Executive VP of products at Symantec, he said, "The upgraded word processor portion of Q&A 4.0 will provide WYSIWYG display (What You See Is What You Get). In addition, the query process has been improved, with a larger vocabulary of terms, and a guide that will make query design easier for users. A report generator can produce cross-tab reports." The article goes on to say that they will ship it when they feel it's ready, "...it should be in shape in the not too distant future." Q&A users were also reminded that Symantec will give a free upgrade if the new version ships within 60 days of purchase of current product.

For the April 20th Q&A SIG I will be covering macros, and in May the lookup functions will be covered. ■

SIG REPORTS

PROGRAMMING SIG

Wendy Sarrett

At the March meeting of the Programming SIG, Bill Phillips gave us an interesting overview of the new Turbo Debugger 2.5 and the rest of Borland's upgrade to its professional C++ development environment. This is an exciting package and will give Microsoft's professional package a run for its money. Unlike the prior version, Borland C++ now supports Windows programming, no Windows Software Development Kit required.

At the April meeting the topic will be debugging examples. We will get into turbo debugger and debug several examples in front of the group. Next month we plan to have a presentation on Assembly Language. We welcome both novice and experienced programmers and hope to see you at our next meeting. ■

RAFFLE WINNERS IN MARCH

BANTAM

Windows 3.0 Power Tools - \$49.95

Brenda Welch

WORDPERFECT CORPORATION

WordPerfect Hat - \$6.95

Jack Bentley

LetterPerfect - \$229.95

Richard Herman

SYBEX

Up & Running with Windows - \$9.95

Gregory Kishel

Mastering Windows 3.0 - \$24.95

Wendy Clifford

ABCs of Windows 3.0 - \$19.95

Robert Strader

DAVE LORENZINI/MICROSOFT

Computer Desk Reference - \$20.00

Jim Brock

ICON

Intermission - \$49.95

Jim Kirkpatrick

ABACUS

Becker Tools - \$79.95

Herbert Tellefsen

STEVE BURNSIDE

CPU Rolling Stand - \$49.95

Ruben Vega

RICHARD SABIN/SYMANTEC

Norton AntiVirus - \$129.00

Marilyn Davis

MEET OUR NEW MEMBERS...

Terry Currier

Well March was a good-news-bad-news type month for membership. We had a number of new members sign up; in fact, 8 new ones joined at the Corel Draw SIG alone (we're thinking of putting up separate bleachers for them). Bad news is, no one put Q&A down for their software of choice, a bad omen (for me).

Marylou Baffoni from Fullerton has a 386, QMS Laser, and modem. She is a Consultant, and uses Qmodem, Ventura Publisher, Corel Draw, Wordstar, and The Draw.

Rebecca Burnside is from Anaheim.

Charles Cambron from Mission Viejo is retired, and uses dBASE III+, Lotus, and Quattro Pro.

Rafael Cardenas lives in Garden Grove has a 386, and is a Computer Tech. He uses Telix, Pagemaker, Corel Draw, Quattro Pro, and WordPerfect.

David Chereb, from Costa Mesa, has a 386 and does Market Research. He uses Lotus and Ami Pro.

Bruce Clumpner from Newport Beach has a SX with a HP Laserjet III. Software of choice include, Procomm Plus, Pagemaker, and Corel Draw.

Jinx Cochrell, a Word Processor, from Laguna Hills has a 386 with a modem. She uses dBASE III, WordPerfect, and Lotus.

Stanley Cochran lives in Newport Beach and uses a 386 with a TI Microlaser printer. His software of choice includes Quattro Pro, Telix, Excel, Power-Point, Windows, and Word for Windows.

Sandra Condon from Anaheim, does Word Processing. She has a 286 and Epson LQ800 printer. She likes dBASE, WordPerfect, and Lotus. Joining with her was William Condon.

Karen Cooper lives in Westminster and does Computer Consulting.

Will Decker comes to us from Fountain Valley and has an 8088. He's an Engineer and uses Corel Draw, Excel, and Microsoft Word.

Donna Fulmizi is from Huntington Beach.

Larry Goodman, a Sales Rep. from Anaheim has a 286. He doesn't know much about computers, but he's pretty knowledgeable about baseball.

Shirley Hockett joined us when her husband renewed. She lives in Fountain Valley and uses an 8088.

Alka Jobalia from Irvine is a Marketing Executive. He uses an SX, Panasonic 1124, modem, and Pagemaker. Joining with him was Tom Jobalia.

Nancy Koontz, a Computer Training Specialist from Carlsbad uses mostly Excel, and WordPerfect with her 286.

...continued on page 10

...continued from page 9

Alex Lancaster from El Toro has a 386, and uses Paradox, and Quattro.

Jeanne Le Van from Santa Ana is Retired. She has an 8088 with an Epson FX80 printer, and uses Lotus, and WordPerfect.

John Maness lives in Irvine and has a 286, HP Laserjet II, and modem. He is a Biomedical Engineer (don't ask me, I had to look up the spelling) and uses Quattro Pro, and Wordstar.

Joe Nilan lives in San Juan Capistrano and uses Paradox with his 286.

Suzanne Oliveri from Fountain Valley is a Nurse. She has a SX and HP Laserjet III. She uses Pagemaker, and WordPerfect.

Alan Peters from Westminster has an 8088.

Robert Potter lives in Newport Beach.

Jim Pulley from Irvine has a 386, HP Laserjet IIP printer and is in Sales. He uses Pagemaker, Corel Draw, Arts & Letter, and Word for Windows.

Bob Rank is retired and lives in Santa Ana. He has a SX with an Epson FX85 printer and modem. He uses Quicken, Nutshell, Prodigy, Express Publisher, Lotus, Norton Utilities, and Leading Edge Word Processor.

Arun Ray from El Toro has a SX and is a Technician.

Joy Sabin comes from Huntington Beach.

Al Shkoler from Placentia is a Consultant. Software he uses is Ventura Publisher, Corel Draw, and WordPerfect.

Harvey Smith from Orange is Retired. He has a SX with VGA and Tandy 130 printer. Joining with him were **Milli Smith**, and **Debra Smith**.

Robert Stephens, a Police Officer from Huntington Beach, uses a 386.

Mike Taibi from Hawaiian Gardens has a 286 with a modem. He is self employed, and uses Xtalk, and WordPerfect.

Terry Thomas, from Garden Grove, has an 8088 with EGA, and is a Retired Engineer. He has a Citizen MSP 10 printer, and uses PC Tools.

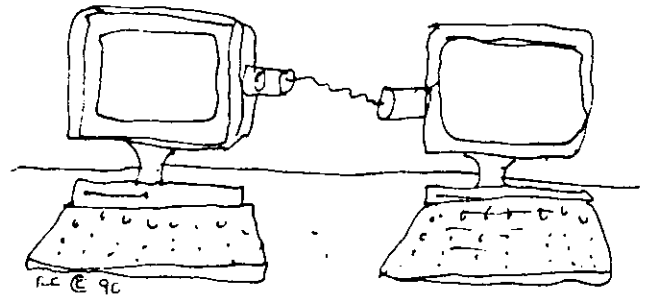
Rick Tunning from Costa Mesa has a 386, is a Desktop Publisher, and uses Pagemaker along with Corel Draw.

Bob Weaver is from Buena Park and brings his son **David Weaver** into the club also.

Liza Williams, a Software Specialist from Newport Beach, has a SX, a HP Laserjet II printer, and uses Lotus, and WordPerfect.

Stew Wilson from Santa Ana has a 386 with VGA, and is a Graphic Specialist. Software choices include Ventura Publisher, Corel Draw, and WordPerfect. ■

COMPUTIMES by Rac Hark



An early attempt at telecommunications.

CUSTOM COMPUTER

CUSTOM PROGRAMMER & COMPUTER CONSULTANT

For the Small Business Professional who wants to keep it SIMPLE!! You won't have to learn everything about computers. From a simple data base to multiple interconnected files. If you're tired of all the "space" talk and want to get it done in plain English, give us a call!!

WE FEATURE Q & A
Very Reasonable
Henri Pierre Laborde
(714) 895-2432

SUMMARY OF DRAFT OF MINUTES OF MARCH 25, 1991 BOARD OF DIRECTORS MEETING

(as submitted by Sunny Lockie)

BOARD MEMBERS PRESENT

Stephen Burnside, President	Bob Ottke
Richard Villa, Vice President	Jim Petit
Ben LeGare	Stan Sabin
Sunny Lockie	Harv Haight
Terry Currier	

BOARD MEMBERS ABSENT

Ginger Buck, Secretary	Steve Silverwood
George Mefferd, Treasurer	
John Goodman, Past President	

MEMBERS AND GUESTS

Mike Springer
Tom Stolp, Parliamentarian

The regular meeting of the OCIPUG Board of Directors convened at 6:45 p.m. at the SIG Space with Stephen Burnside presiding.

APPROVAL OF MINUTES - FEBRUARY 25, 1991

Harv Haight moved to approve the minutes as reported in *README.DOC*. Motion passed.

TREASURER'S REPORT

George Mefferd was absent, but sent copies of the approved budget for 1991 to be distributed. Some discussion followed. The Library is working again and bringing in receipts, thanks to John Lundsford and others.

COMMITTEE REPORTS

Publications Committee Chairman Sunny Lockie reported that the *README.DOC* was four pages longer this month, costing about \$1000 to print and \$180 for bulk postage. There were three full-page ads in this issue. Some discussion followed regarding the IRS letter of non-profit status. Everyone will look among their files for this letter so a reduction in bulk postage can be obtained. Program Committee Chairman Richard Sabin was not present, so Richard Villa summarized the Program Committee meeting. Membership Chairman Terry Currier reported there are 835 active memberships at this time. He has written letters to corporations inviting them to join OCIPUG, and has written follow-up postcards to those not renewing after the first reminder letter. Terry was acclaimed by the rest of the Board for the excellent job he is doing as Membership Chairman.

OLD BUSINESS

Tom Stolp brought the fireproof safe purchased to house OCIPUG legal documents and letters at the SIG Space.

SIG SPACE COMPUTER

There is a need for a mouse for the new computer; Ben LeGare has a 19" TV he is willing to lend to OCIPUG until a decision is made regarding the utilization of monitors or a large TV in the SIG Space. Terry Currier reported on the request to Mitsubishi for donation of TV for SIG Space. Jim Petit will install a handle on the top of the computer for ease in carrying. It was mentioned that a donation of another computer to be used at general meetings would be appreciated. No equipment cart is felt to be needed at this time.

There has been some difficulty with SIG leaders leaving the lock box open when they leave the premises. Richard Villa will call for a SIG Leaders meeting before the next General Meeting to set some guidelines for the use of the new computer and the use of the lock boxes. Software used by the SIGs can be left on the computer through the use of software which will zip and unzip subdirectories with password protection.

Richard Villa moved, Ben LeGare seconded, that "CMS be made a Business Sponsor on the back page of the *README.DOC* for the year of 1991." Motion passed. Each sponsor will be decided individually.

Stan Sabin and Tom Stolp will review the new Bylaws to make sure they are correct for publication and to put on the BBS.

Bob Ottke reported that he wrote to Seagate regarding the two 600 MB hard drives and is still waiting for a response.

NEW BUSINESS

The May Board Meeting is currently scheduled for May 27, part of Memorial Day weekend. It was moved by Sunny Lockie, seconded by Richard Villa, to "move the date of the May Board Meeting to Wednesday, May 29, at the SIG Space." Motion passed. General Meeting dates for the second half of 1991 to be confirmed with Orange Coast College by Stephen Burnside.

Richard Villa reported the cancellation of the Dataease and Investors SIGs and the addition of Games (2nd Wednesday) and GeoWorks (4th Friday) SIGs.

There was some discussion of a letter written to the OCIPUG Board Members from a former member. No action was recommended.

The meeting adjourned at 8:30 p.m.

(Editor's Note: The above minutes do not become official or certified until adopted by the Board at their next Board meeting.) ■



As a courtesy to OCIPUG members, the memberships up for renewal are published in README.DOC every month.

**IS YOUR NAME LISTED BELOW?
DON'T FORGET TO RENEW!!**

THESE MEMBERSHIPS EXPIRE IN APRIL

Joy Agnew	Greg Levanas
Arlene Atkins	John Long
Larry Bailey	Ramon Lugo
Richard Barker	Eileen Maag
Amando Barrios	Donald Mikami
Jack Bentley	Gary Nelson
Jerome Blum	Robert Noble
Donald Burdorf	Stephen Novak
Victor Camfield	Susan Novak
Gene Carter	Frank Oliver
Thomas Chavez	Eleanor Parmalee
Bob Crippen	Gene Pascual
Elvin Daugherty	Dave Patterson
Arthur Davis	Diane Perry
Syd Deem	Michael Pittman
Steven Dela	Donald Pousha
Jim Dickerson	James Pursell
Michael Earls	Earl Raguse
Albert Ellenbogen	Thomas Randolph
Scott Ellyn	Dale Robinson
Richard Evins	Dave Robinson
Patrick Flynn	Kay Rogers
Paul Frech	Robin Sabin
Kathleen Garrison	Gordon Savage
Greg Gleicke	Peter Scott
Dave Gueldner	Don Smith
John Hamaker	Hugh Stevenson
Carl Held	Basia Swanson
Joseph Holtz	Ben Swanson
Harold Howarth	Ali Tehrani
Genelle Johnson	Don Tunnell
Richard Kenyon	Ruben Vega
Sheila Kessler	Richard Villa
David Kodama	Herbert Wolfson
Evelyn Langford	John Woodhouse

MARCH 1991 FINANCIAL REPORT

George Mefferd, Treasurer

	Un-restricted Funds	Tim Smith Fund
Cash Balance - February 28, 1991	\$9,048.06	\$4,277.74
Cash Receipts		
Interest	\$ 40.13	\$ 27.73
Advertising	229.50	
Membership Dues - New	1,116.00	
Membership Dues - Renewal	1,656.00	
Library Receipts	360.00	
New Member Sig	115.00	
Total Cash Receipts	\$ 3,516.63	\$ 27.73
Cash Disbursements		
Rental - General Meeting	\$ 180.00	
Rental - Sig Space	767.00	
Printing - Newsletter	1,061.56	
Postage - Newsletter	180.14	
Telephone - BBS	89.16	
Meeting - Board	22.49	
Library Expense	94.38	
Equipment - Sig Space	93.95	
Total Cash Disbursements	\$ 2,488.68	
Net Change in Cash Balance	\$ 1,027.95	\$ 27.73
Cash Balance - March 31, 1991	\$10,076.01	\$4,305.47

THESE MEMBERSHIPS EXPIRE IN MAY

Colleen Baker	Dick Mercer
Tom Baker	Arnold Montgomery
Robert Bond	Marlene Montgomery
Arthur Boughhey	Kevin Moser
Larry Brockett	Herbert Moss
Dan Brostoff	Jerry Neumann
Kenneth Curry	Ronald Perkins
Marilyn Davis	Tim Pitts
Rich Davis	Richard Sabin
Teddy Edwards	Carol Slasher
Joseph Farber	John Squirrel
William Fleischman	June Squirrel
John Gallie	Cliff Stanton
Marco Giammarinaro	Mary Stone
John Goodman	Herbert Tellefsen
Dave Gryznak	Bonnie Ulanovsky
Phoebe Huang	Thurman Wade
Kenneth Kamber	Donald Wilgus
Allen Kaplan	Audrey Wolden
Gregory Kishel	John Woolston
David Lorenzini	Ning Yeh

1991 OCIPUG Board of Directors

OFFICERS

President	Stephen Burnside	722-0327
Vice President	Richard Villa	841-6991
Secretary	Ginger Buck	534-7878
Treasurer	George Mefferd	673-4759
Past President	John Goodman	895-3195

DIRECTORS

Terry Currier	1991	774-2018
Harv Haight	1991	546-0820
Ben LeGare	1992	472-0944
Sunny Lockie	1991	644-0103
Jim Petit	1991	841-3699
Robert Ottke	1992	759-1515
Stan Sabin	1992	968-7307
Steve Silverwood	1992	534-6964

People and Numbers to Know

Membership	Terry Currier	774-2018
SIG Chairman		
Program Chairman	Richard Sabin	965-6734
Bulletin Board	Robert Ottke	759-1515
Library Committee	John Lunsford	995-0947
Facilities Chairman	Joe Farber	642-6993

OCIPUG BBS & Message line numbers

Public Line (1200/2400)	843-0388
Members only (1200/2400/9600)	843-9248
OCIPUG Info & Message line	843-2048

OCIPUG General Meeting Dates 1991

Our General Meetings are held on the last Saturday of each month except when there is a conflict with a major holiday.

April 27

May 25

June 29

Membership Form

Bring to General Meeting or mail to return address on the back cover

New Renewal Information Update Date: _____

Have you ever been a member of OCIPUG? _____ If so, what is your member number: _____

Individual Membership \$36.00 per year Family Membership \$45.00 per year

Amount Enclosed: \$ _____

Title: Mr., Mrs., Ms., Dr. (Circle One)

First Name: _____ Last Name: _____ Family Members: _____

Address: _____ Unit No. _____

City: _____ State: _____ Zip Code: _____

Home Phone: _____ Work Phone: _____

I consider myself to be: Beginner Intermediate Advanced

OCIPUG Business Sponsorship Program



7372 Prince Drive, Suite 101
Huntington Beach, CA 92647
843-9262



**GARDEN OF EDEN
SPONSOR**
16485 Magnolia Street
Westminster 92683
841-4994

The Orange Coast IBM PC User Group thanks PCR Personal Computer Rentals for renewing its commitment to OCIPUG.

Your support enables us to better serve our members.

If you or your company would like more information on this program, please call Harv Haight at (714) 546-0820.

Orange Coast IBM PC User Group
Post Office Box 6100-211
Costa Mesa, California 92628

Postmaster: Form 3547 Requested
Return and Forwarding Postage Guaranteed

BULK RATE
U.S. Postage Paid
Costa Mesa, CA
92628
Permit No. 292

KA-22-91

DATED MATERIAL — DO NOT DELAY