

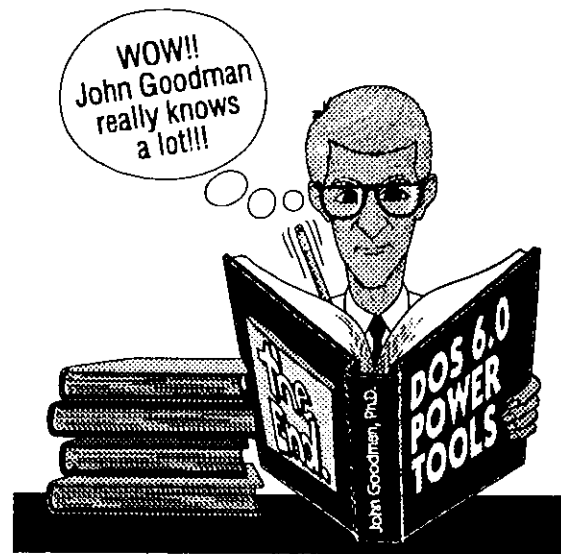
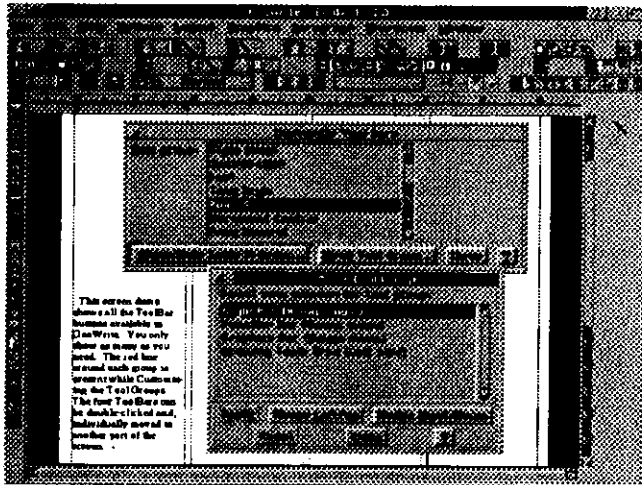
README.DOC

MAY 1993

ORANGE COAST IBM PC USER GROUP

VERSION 9.5

SATURDAY, MAY 29, 9:00 A.M.



& our own JOHN GOODMAN

DETAILS INSIDE ON PAGE 9

IN THIS ISSUE

GENERAL MEETING REPORT - APRIL	1	UNLOCKING PASSWORD PROTECTED DOC	13
PRESIDENT'S MESSAGE	2	MICROSOFT USER GROUP SUMMIT	14
ABCs OF THE BBS	4	PRODUCT REVIEW - PLACES TO PLAY	15
PRODUCT REVIEW - PARADOX FOR WINDOWS	5	BATCH FILE BASICS	16
HERB'S HANGOUT	6	OCIPUG SUPPORT GROUP	17
LEARNING TO FLY	8	SIG REPORTS	19
MAY GENERAL MEETING	9	BOARD MEETING MINUTES	23
INTRODUCTION TO PROGRAMMING	12	TREASURER'S REPORT - APRIL	24

README.DOC is published monthly by the ORANGE COAST IBM PC USER GROUP, P. O. Box 6100-211, Costa Mesa, CA 92628. The group's recorded message number is (714) 843-2048.

IBM is a registered trademark of the INTERNATIONAL BUSINESS MACHINES CORPORATION. Neither the User Group nor README.DOC is connected with IBM in any way.

ORANGE COAST IBM PC USER GROUP, contributors and editors of README.DOC do not assume any liability for damages arising out of the publication or non-publication of any advertisement, article, editorial, or any other item in this newsletter. All opinions expressed herein are those of the individual authors only and do not necessarily represent the opinions of the ORANGE COAST IBM PC USER GROUP, its officers, Board of Directors, the README.DOC newsletter, or its Editors.

README.DOC, Copyright© 1993 is a publication of the ORANGE COAST IBM PC USER GROUP. Unless otherwise noted, other nonprofit user groups may reprint without prior permission any of the articles appearing in this newsletter, provided that proper author, title and publication credits are given.

ADVERTISING POLICY

Members are allowed to place an advertisement for personal items in the README.DOC newsletter at no cost. There will be a limit to the amount of advertising placed in the newsletter. All submissions will be placed on a first come, first served basis.

Commercial advertisements, from members and others, are also welcome. For information concerning advertising rates and requirements, contact:

Stephen Burnside,
Advertising Manager,
README.DOC
#3 Charleston
Irvine, CA 92720

PURPOSE STATEMENT

The purpose of the ORANGE COAST IBM PC USER GROUP is to provide a forum for members to share information and experiences that will help other members obtain maximum benefit and enjoyment from the use of their IBM PC and compatible personal computers.

TRADEMARKS

The mention of the names of various products in this publication without indication of Trademark or Registered Trade Mark status does not imply that these products are not so protected by law.

ADVERTISING RATES

Full Page	\$150.00
Half Page	\$ 85.00
Quarter Page	\$ 50.00
Business Card	\$ 25.00

README.DOC NEWSLETTER STAFF

Publisher	Sunny Lockie	644-0103
Editor	Jean Stevens	644-1017
SIG Guide Editor	Walt Strong	557-7008
Advertising Manager	Steve Burnside	544-5599

Past Editor:	Tom Sutro	1985-1987
Past Publishers:	Steven Dela	1987-1989
	Stephen Burnside	1989-1990

CONTRIBUTORS

Richard Baznik	Herb Huey
Richard Black	Max Lockie
Derek Bradley	Bob Ottke
Ginger Buck	Bob Peringer
Tony Carnicello	Wendy Sarrett
Terry Currier	Jeff Sinn
William Domingo	Michael Springer
Linda Fox	Jean Stevens
Harv Haight	Walt Strong
Terri Hansen	Audrey Wolden

PRODUCTION

Sunny Lockie
Walt Strong

DISTRIBUTION

Stacy Lockie
Greg Lockie

Camera ready copy produced with:

80486-33	HP Scanjet IIC
HP LaserJet III	Ventura Publisher 4.1
Pacific Page Postscript 4.1 XL	Corel Draw 3.0
WordStar 6.0	Publishers Paintbrush

Printing by Champion Graphics, Santa Ana.

README.DOC is published monthly. A subscription is included with all paid memberships in the Orange Coast IBM PC User Group.

Address all inquiries and address changes to: README.DOC, P. O. Box 6100-211
Costa Mesa, CA 92628

GUIDELINES FOR README.DOC ARTICLE SUBMISSIONS

All items submitted for publication are subject to editing. We reserve the right to refuse any material submitted for publication.

Send all submissions to the Editor, on or before the deadline listed below, using one of the following formats:

1. UPLOAD to the Bulletin Board in ASCII text format.

2. 5 1/4" DISK mailed to the Editor in time to meet the deadline: P. O. Box 8224, Newport Beach, CA 92658.

DEADLINE FOR ALL SUBMISSIONS WILL ALWAYS BE 12 MIDNIGHT ON THE SATURDAY FOLLOWING THE GENERAL MEETING.

After fielding questions in a brief Random Access, Vice-President Bob Ottke opened OCIPUG's 98th General Meeting shortly after 9:00 a.m. Past-President John Goodman described briefly two new books now in release and an update of a third; John will detail these offerings as part of the May General Meeting Program.

Richard Freedman, Microsoft's Product Manager for MS-DOS, gave our first technical presentation, describing special features of just-released Version 6.0. Multiple configurations are now possible within a single CONFIG.SYS file: a startup menu lets you choose a specific configuration block from two or more blocks, to allow individual optimization for highest availability of lower memory and to avoid harmful interaction between specific programs. The menu can include special start and end sequences common to all blocks.

When, after boot-up, the phrase *Starting MS-DOS* appears, both CONFIG.SYS and AUTOEXEC.BAT can be bypassed for a *clean boot* by pressing F5; if F8 is pressed instead, the CONFIG.SYS entries can be entered one line at a time, to help troubleshoot. While MEMMAKER is highly effective and much easier to use than the techniques required with MS-DOS 5.0, it does not necessarily mount items in upper memory in the best sequence (largest files first, or files that require more memory during installation). MEMMAKER, however, lists in a MEMMAKER.STS file, memory requirements of each driver or TSR started by CONFIG.SYS or AUTOEXEC.BAT, for optimization. MEMMAKER rejects conflicts with existing drivers. Bugs during extensive beta testing were reported no more frequently than with MS-DOS 5.0 (perhaps even fewer bugs).

MS-DOS 6.0 incorporates *DoubleSpace* compression (that won't work with RAM disks), an effective anti-virus program, and a smooth backup (that applies, however, only to disks, not tape, and that can't use new 2.88 MB disks). These items have been derived under license from Central Point and Symantec. Symantec's SPEEDISK also shows in a slower, revised form as

GENERAL MEETING

April Report

Harv Haight

DEFRAG. New external commands have been added: CHOICE, similar to the Norton ASK command; MOVE, a technique previously available with XTREE and several other shells; and DELTREE, a potentially hazardous wipeout, in one move, of whole directories and subdirectories. UNDELETE works better than the MS-DOS 5.0 command; the /S suffix loads DELETE SENTRY.

All in all, MS-DOS 6.0 is a definite asset to IBM-PC users, but hardly the world-shaker that MS-DOS 5.0 was; it's a breath-catcher and saves money by providing almost-as-good copies of vital utilities. Furthermore, it meshes smoothly with Windows 3.1 in a way far better than does MS-DOS 5.0.

Prior to the break, immediate Past-President Steve Burnside announced Microsoft's \$10 each contribution to NEW memberships at this General Meeting. During the break, Sol Stein of Write-Pro Corporation passed out disks containing Lesson 1 of a program that shows award-winning tips for writing the novel you've always intended to publish.

After the break and SIG leader announcements, Steve Gorney of Chinon America showed us details of Chinon's SCSI CD-ROM drives. The CDS-535 motor has dual speeds, up to 680 MB of disk data, a 256KB buffer, and 280 mSec access time. Toshiba's drive has even faster access, but Chinon's higher throughput rate is more significant. *Speed Breaking* features result from dynamic motor damping. The CDS-535 supports multisessions (additive imprints) and Kodak Photo CDs (35-mm prints digitized and transferred to a CD-ROM disk); it comes with SCSI-2 and supports connect/disconnect action. The earlier CDS-435 drive has a single speed, up to 680 MB

of disk data, a 64KB buffer, and 350 mSec access time. The *Crystal Collection* bundle of software, optional with either drive, includes a multimedia encyclopedia, world and USA atlas, games, and teaching programs. Club prices with order form, internal mount: CDS-525 with SCSI-2 card and cables, \$520 and CDS-435 with SCSI card and cables, \$350. *Crystal Collection* with either, add \$75. Taxes, shipping, and handling included. Chinon also supplies floppy drives (including ISO-compatible magneto-optical) and scanners; for details, call (800) 441-0222.

Symantec's Marty Rubenstein is the strictly-business Product Manager for Norton Utilities Version 7.0. He started his presentation of Version 7.0 by noting changes from Version 5 to 6, and then those from Version 6 to 7. He emphasized that (as usual) the Norton Utilities has advantages over MS-DOS 6.0's licensed versions (just as STACKER 3.0 does over DoubleSpace). He predicts continued popularity of the separate utility programs. With Version 7.0, SPEEDISK and DISK DOCTOR work inside compressed drives, larger hard drives are supported, hardware diagnostics are more comprehensive, and single-pass disk duplication is possible. Generous discounts are available for registered or competitive upgrades (although CompUSA and Egghead, by my check-out, carry only the standard package).

Fifty-eight items were raffled off. Bob Basaraba and Steve Burnside pulled tickets from the box; Ginger Buck and others really had to move fast to keep up with callouts. Names of winners are given elsewhere. OCIPUG thanks Microsoft and Symantec for their generosity. ■

President's Message

Max Lockie

During the past month much has occurred. First, Terry Courier (Oops, that's the way they spelled Courier) and I went to Microsoft for their User Group Summit Meeting. It covered many areas in which Microsoft is involved.

Yes, Bill did spend an hour fielding questions about what is over the horizon. I was disappointed upon hearing what his outlook was for the next three to five years. In response to a direct question on voice recognition, his only comment was that it required a lot of "MIPS" but he placed no importance on it. In my opinion, one of the greatest problems is the keyboard. Typing is taught in our high schools but I believe that it is approached with the idea that, "I am not going to be a secretary so why should I be keyboard literate?" I think that the personal computer's efficiency and usability would be greatly enhanced if voice recognition was widely available. The next day we did see a demonstration of Microsoft's implementation of voice recognition in Windows, where the demonstrators verbalized *Files* and then *Attributes*. The Files window opened but the Attributes window would not open without redefining the voice pattern for attributes.

By the way, Bill spoke of Information At Your Fingertips. He defined it as an idea "...to empower individuals and organizations by making information increasingly easy to find and use." To accomplish this he spoke about "...producing powerful and useful products" as well as "... making it easier to get the most out of their software." Lofty goals. But why is it so hard to get there...? In reality, it is getting easier but our expectations are growing at an even greater rate.

Secondly, our problems with the audio/visual equipment came to a head at our April General Meeting.

The video projector had no power. We finally snagged an Orange Coast College employee who produced a tall ladder and attached an extension to the projector so that the meeting could go on even though we were unable to have Random Access.

Unfortunately, the problem with the projector was not reported to the College by the employee. A professor who had a Monday morning class in marine biology was so displeased that he communicated to the Community Services Department his belief that we had caused the situation and our use of the Science Hall should be terminated.

I had a meeting on Wednesday with George Blanc, the Dean of Community Services and Continuing Education, along with his boss James McIlwain, Vice President of Administrative Services, at which time I noted that the equipment was not working when we arrived and that all corrective action was taken by employees of Orange Coast College. I stressed that the video equipment was critical to our group and that a solution that would benefit both parties would be to employ an OCC audio/video technician on Saturday mornings to ensure that the equipment works for our meeting, as well as, be serviceable on the following morning for OCC classes. Although some might think that our rental of the Science Hall should include such services, no such services are delineated in our agreement. I think this would be a WIN/WIN solution for both of us.

One other item that I would like to stress to all who come to the General Meeting is the cleaning up of the Science Hall. Please dispose of all unwanted material that you pick up or bring with you, and return tables to their proper location. ■

If you're not considering Lotus Ami Pro, you must know something the experts don't.

"Ami Pro® is the best word processor on the market... [it] goes the competition one better in every respect."

1992 MVP, PC/Computing 12/92

"Ami Pro 3.0 takes the lead over Microsoft® Word as the Windows™ word processor to beat."

Top Rating Ever for Windows Word Processor, InfoWorld 9/28/92

"Ami Pro 3.0 provides a host of new and enhanced features... that save time and make your work easier."

100 Best Products of 1992, Windows Magazine 2/93

"Ami Pro is the kind of program that I'd like to go out and buy right away. It's that easy and it did that much."

*#1 Rating, Software Digest Ratings Report (Vol. 9, #6, 9/92)**

"Ami Pro 3.0... ups the ante in the fight among the Big Three: Ami Pro, Microsoft Word 2.0 and WordPerfect® for Windows. It's full of clever features that make your work easier and faster."

Award of Distinction, BYTE 9/92

Call **1-800-872-3387, ext. 8601** for your free working model or to upgrade from your current word processor for just \$129.*

"Beg or borrow time on a system running Ami Pro, and you'll soon see what a word processor should be."

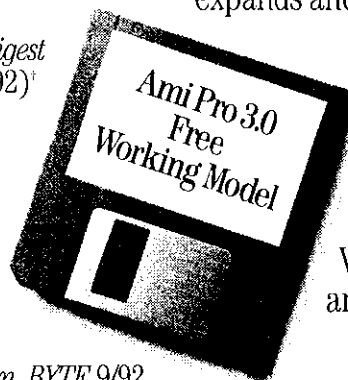
PC World 6/92

"Ami Pro Version 3.0... is the most graphical, colorful and in many ways the most powerful word processor on the market... no other package can match its ambition, its range of functions or the sheer pleasure of using it."

Best Products of 1992, PC Magazine 1/93

"You can learn to use Ami Pro... in about a day. Put the manual in a drawer as a first step. There are no required control codes, no deeply nested menus, no command words. This friendliness greatly expands and sharply changes the market."

Forbes 2/93



"In the Windows word processing world, Ami Pro 3.0 comes close to being perfect... it stands above Word and WordPerfect both in its function and in its speed."

Editor's Pick, Home Office Computing 1/93

Lotus **Ami Pro 3.0**
Word Processor for Windows

*Among all word processors tested. Reprints of report available upon request. *Offer expires 9/30/93. Call for a list of eligible word processors. Education-priced Lotus products not included. Offer valid in U.S. only. Not to be combined with any other offer. Have your current word processor and credit card ready when you call. ©1993 Lotus Development Corporation, 55 Cambridge Parkway, Cambridge, MA 02142. All rights reserved. Lotus and Ami Pro are registered trademarks of Lotus Development Corporation. Windows is a trademark of Microsoft Corporation. WordPerfect is a registered trademark of WordPerfect Corporation. Software Digest is a registered trademark of NSTL, Inc., a McGraw-Hill Company. Adobe Type Manager and the ATM logo are registered trademarks of Adobe Systems, Inc. In Canada call 1-800-60-LOTUS.



of the BBS

Bob Outke

VIRUSES

Some questions keep coming up again and again, so, at the risk of a lot of repetition for some of you, we will again cover some of the key points in keeping yourself out of trouble with viruses.

Who needs to worry about possible virus infection? Let's ask a few questions:

1. Do you ever copy anything to or from a floppy?
2. Do you ever connect with another PC, either by modem or by direct parallel or serial file transfer?
3. Do you ever buy and install new software?
4. Do you ever use shareware, either from a BBS, or purchased from a vendor?
5. Do you ever allow your kids to play games on your computer?
6. Do you ever swap disks with a friend?

If your answer is NO to all of the above, you are probably safe from virus infection. By the way, what DO you use your computer for, anyway?

First, let's sweep away some illusions. Except for boot sector viruses (we'll get to that later), you will NOT contract a virus unless you execute the file containing it. Many users want to direct all their downloads to floppies, "...so we won't get a virus on the hard disk." Go ahead, use the hard disk. You can even open the ZIP files. Just be sure to scan before executing a COM or EXE file. But material downloaded from a reputable BBS is VERY unlikely to cause any problems. SysOps are very cautious about the files on their system. Anything uploaded is automatically scanned before it is made available to you for download.

Another illusion is that all brand new software purchased from a store is clean. There are many instances where software packages are opened, then returned to the store for refund. What happens? Most likely, the store simply restores the shrink wrap, and puts it back on the shelf for the next unsuspecting customer. Somewhere along the line, some customer will decide that it is too much trouble to return previously opened merchandise. Voila! A virus! Best caution: If you EVER see commercial software that shows ANY SIGN of having been opened, return it to the store for exchange or refund. Even if everything looks OK, if you are really paranoid, you might want to scan your disks before installing.

Now we know where they come from, so what do you do to protect yourself? You have heard this before, but hear it again: **MAKE A FULL BACKUP OF ALL YOUR IMPORTANT FILES AS OFTEN AS NECESSARY.** It is a very comforting feeling to know that everything is out of harms way, and that you can restore to a completely re-formatted disk if you really have to do so.

Be sure that you have your SYA (Save Your Fanny) disk up to date. This is a topic that Mike Springer and I have worked over a lot, but not more than it deserves. In its simplest form, it should be a bootable disk with the latest version of SCAN and CLEAN, along with the docs. Of course, you can get a lot more elaborate, and include system data generated by Manifest, Microsoft Diagnostics, CheckIt, etc. so you will know exactly what your entire system was before disaster struck. That is up to you. Please engrave in your mind, though, that you do not have an effective SYA disk unless it is **WRITE PROTECTED.** To be in the best possible shape, you should update the SCAN and CLEAN files as new versions come out. McAfee releases new versions as soon as a new virus threat appears, sometimes weekly, sometimes as much as a couple of months. You will always find the latest versions on our BBS within a day or two of their release.

Personally, I use the McAfee shareware programs. In addition to SCAN and CLEAN, he offers VSHLD, a TSR that will intercept an attack by a virus. Similar programs are offered to protect networks, and there are OS/2 versions, as well. That is not to say that Norton, Central Point, and several others don't offer very effective software. I was particularly impressed by the efficient way the Norton AntiVirus handled the *Stoned* virus on the machine of a friend. Also, there is an Icelandic program, FPROT207.ZIP that I haven't used, but has a good reputation.

How do viruses work? As you can understand, the researchers in this field are quite reluctant to disclose anything about how to build a virus, or how to detect one. That would only bring more kooks into the field, and make it easier for them to evade the virus detector programs. Suffice it to say that every virus contains some unique string. Detection of that string suggests that the virus is present. Once in a great while, there are some embarrassing false positives. For example, the new PKZip program caused Norton AntiVirus to identify the Maltese Amoeba virus. Best to take false positive seriously, though, just in case.

Basically, there are two main classes of viruses: Boot sector viruses, and COM - EXE infectors. Boot sectors almost always involve floppies. A write protected floppy that carries, say, the *Stoned* virus will infect a machine instantaneously. A machine infected with *Stoned*, though, cannot touch a write-protected floppy. The extremely virulent *Michelangelo* is a variant of *Stoned*, and some detectors confuse the two. Fortunately, both can be quickly eradicated with the right software and procedure. Some of

the so-called *mutant* viruses, though, might require a re-format of your hard disk. BACK UP....

The EXE - COM infectors attach themselves to executable files, and can be detected not only by what they do, but by an increase in file length, and a change in date. Their activities range from relatively benign to disastrous. Fortunately, most of these are relatively easy to remove. After a couple of hours of careful work, including checking ALL your floppies, you should be back in electronic good health. There are programs (SEN-TRYB3.ZIP) that you can install in your AUTOEXEC which will first make a file of length and date data of all executables. The next time you boot your machine, it will scan your drives, and tell you if there have been any changes that might indicate a virus infection. There are two disadvantages to those programs: first, they prolong the boot process considerably, and, second, any change you make to a newer version of any program will produce an alert.

Patricia Hoffman, a lady who works closely with McAfee, produces a monthly report of all known viruses, their origin, history, mode of action, effect on your machine, how to diagnose and remove, and just about everything about computer viruses. It is a big one, and all data are in HyperText, so individual viruses are easily located. If you really want to delve into the subject, just do a search for VSUMX*.ZIP and download the latest version.

This is by no means a comprehensive discussion of viruses, but should give you some pointers to help you stay out of trouble. There are any number of systems that you could employ to keep yourself clean, and a lot of good anti-virus programs out there. Most people will never get one, but, if you do, you won't forget it soon!!!

The last word: BACK UP OFTEN.... ■

PRODUCT REVIEW

Paradox for Windows

Terri R. Hansen

Borland's Paradox for Windows v1.0 is a dynamic relational, menu-driven database that was certainly created for ease of use. As demonstrated at the February General Meeting, this program definitely has many bells and whistles.

Years ago, dBase was the leader in developing database software and I was using dBase when they didn't have numbers affixed to the versions. In recent years, I've seen Borland quietly step in with this incredibly powerful database program. I was once asked if I used Paradox and my response was, "Sure, for importing/exporting." Quite honestly, I didn't feel as though I had time to learn the program. That couldn't have been further from the truth. Paradox's interface has allowed users to (pardon the expression) *hack* their way through the program quite quickly and efficiently. Now, obviously, if you're interested in the more elegant attributes of the program, you'll have to read the manual (eek!).

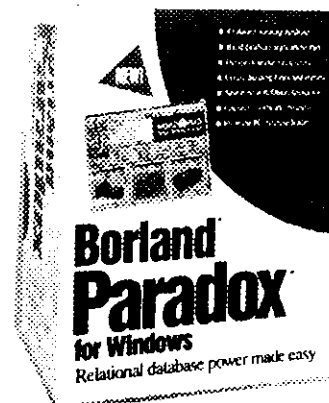
As with previous versions of Paradox, Paradox for Windows offers the same elegance of use. It is a menu-driven program that will offer help at any point of execution. And if the help menu isn't enough, the program will attempt to do some thinking for you through the Object Inspector. Just click the right mouse button in the area in which you are working to see all related items that can be done with that particular object. What a great concept, now you don't have to remember which pull down menu to use. Also, as with previous versions of Paradox, Paradox for Windows does offer importing and exporting, however, I was a little disappointed in the way that Borland deleted many of the previously used formats. You can import/export the following formats: Delimited Text; Fixed Length Text; Quattro (various formats); Lotus; and

Excel. If you need to import a *database* format, Paradox for Windows will ask you which format to retrieve when you open a file.

The Windows interface of the product offers ease and elegance in table, form, and report design. The program holds you by the hand in creating new items. In keeping with this thinking, Borland offers Speed-Bar Icons. You can use icons that are currently available with the program or you can design your own icons. These icons are easily placed anywhere in your report or data entry screen.

Although I've been hearing about PAL Programming (Paradox Application Language) for quite some time, I have not yet had the opportunity to research Paradox for Windows' version, Object PAL. With the glorious presentation given in February, I look forward to getting involved with PAL programming relatively soon. Mind you, the presentation that was given (remember the airline reservations, seat assignment, etc.) took a great deal of planning and effort and I applaud Borland for both.

Paradox for Windows requires a 386 microprocessor or higher; 4MB of ram; DOS 3.1 or later; EGA Video monitor or higher. CGA video cards are not supported. 20MB of free disk space is suggested, although you can get by with about 15MB. ■



Herb's Hangout

Herb Huey



THE MS-DOS 6.0 ROLL OUT

Did you get into the Microsoft Rollout of MS-DOS 6.0? The number of people that showed up exceeded everyone's wildest expectations, including our Board of Directors, who did a great job in co-hosting this event. When the doors to the meeting room closed for the Rollout presentation, there appeared to be over a thousand people still in line. Why are we surprised that over a thousand people showed up? OCIPUG and NOCCC heavily advertised the Rollout. The combined membership of both clubs exceed 2000. OCIPUG members were busy distributing fliers at the ACP swap meet and the Orange County Register advertised the event. I find it surprising that Microsoft didn't expect over a thousand people to show up. Surely, they believed that MS-DOS 6.0 was such a great product that many potential users would give up an evening to see the introduction of the latest and greatest version of their all-time best-selling software.

A NEW HARD DISK DRIVE

It's hard to believe but I started running out of hard disk space again. My last tape backup was over 600 MB! I decided to get another hard disk drive to replace my Stackerized 80 MB C: drive, which I will install in my daughter's 286 system. At the March ACP swap meet, I prepared to buy either a Maxtor 210 MB or 250 MB drive, but Bob Basaraba and Terry Currier warned me about the recent reliability problems of some of the 200 MB class Maxtor drives. Bob pointed out a booth that was selling Quantum drives so I wound up buying a Quantum LPS240AT 240 MB drive for \$315. The setup information was a little difficult to understand but once I figured it out installation went without a hitch. The one-inch high Quantum drive works very well with my Maxtor LXT-340A 340 MB drive.

I partitioned the Quantum drive into two parts; 114 MB for C: drive and 125 MB for D: drive. The new D: drive is the same size as the old D: drive that was formerly on the Maxtor. Now I have a wonderful opportunity to compare the relative merits of Stacker 3.0 versus MS-DOS 6.0's DoubleSpace (DBLSPACE).

MS-DOS 6.0 INSTALLATION

I bought MS-DOS 6.0 at the Rollout. I have most of the new features that MS-DOS 6.0 trumpets, but it was

the small things that convinced me to buy it. I felt it was a perfect time to install MS-DOS 6.0 on a brand new drive and compare the new features against some current third party software. I worried about MS-DOS 6.0 cooperating with the OS/2 boot manager, as well as with QEMM and Stacker. I made a full backup (600 MB total) and installed MS-DOS 6.0 without incident. The DOS manual explained how to turn on the OS/2 boot manager, after the DOS installation, by using FDISK to set the boot manager as the active partition.

I don't know if anyone else has noticed it, but booting up my system is much faster with MS-DOS 6.0. As Harv Haight pointed out, MS-DOS 6.0 is significantly larger than MS-DOS 5.0. If you decide to install all the bells and whistles, MS-DOS 6.0 will exceed 9 MB versus the 2 MB for MS-DOS 5.0. I love the feature that allows you to single-step CONFIG.SYS upon bootup. I haven't started using the concept of configuration blocks yet but it is a powerful concept that DR DOS has had for a while. Stacker and QEMM worked just fine without any modification but my free memory dropped from 620K to 576K. Later, I found out that I lost the 43K of memory installing DBLSPACE. Here is a tip installing DBLSPACE. DBLSPACE installs quickly on a nearly empty drive but takes about an hour to compress 100 MB!

Next, I decided to restore the contents of my old D: drive onto the newly doubled D: drive. Surprise! DBLSPACE installed without incident but is nowhere as efficient as Stacker. Here are the statistics: The original D: partition is 130,783,232 bytes (125 MB). DBLSPACE increased the drive size to 187,170,816 (178.5 MB) for a compression ratio of 1.43. Stacker achieves a compression ratio of 1.99 by increasing the drive size to 259,620,864 bytes (247.5 MB). My backup consists of 192 MB, which is 13.5 MB too large for DBLSPACE but fits comfortably using Stacker.

If you presently use Stacker 3.0, keep on using it. Microsoft offers a conversion utility to convert Stacker volumes to DBLSPACE. Now why would I want to decrease my storage space? Reports are that the utility performs the conversion at the rate of 10-15 MB per hour! Not with 600 MB am I going to do that. Stac Electronics will shortly release Stacker 3.1 that will work more tightly with DOS, much like DBLSPACE. If you presently don't

use compression software, DBLSPACE is an excellent way to safely compress your hard drive but beware even Microsoft admits that deinstalling DBLSPACE is difficult. I just hope that the new Stacker release has a way to take care of my DBLSPACE partitions.

Next, I decided to play around with MS-DOS 6.0's memory management utility, MEMMAKER. I have both QEMM 6.0 and 386MAX 6.03 available to make some comparisons. Using QEMM 6.0, I presently have 589,328 (576K) bytes free. This is not really a fair comparison since I spent last month reading the manual (see April's Readme.Doc)! Anyway, I stripped out the QEMM commands from the CONFIG.SYS and AUTOEXEC.BAT files and left everything in low memory. I then ran MEMMAKER in the Express and Custom Setups. Next, I restored the plain vanilla files and did the same with 386MAX. The table below highlights the results:

There are plenty of caveats hidden in this table. I did not use QEMM's Stealth technology that maps out video memory to gain extra memory. I had too much trouble using this feature. When I first ran MEMMAKER before I had a clean DOS Low, I actually lost 100K of memory from DOS Low. I noticed the same thing happen in my many trials (or tribulations) with QEMM and 386MAX. Note that QEMM and 386MAX were most efficient re-mapping memory since the largest free block is 0K. However, QEMM eked out the most free memory of all my attempts. A word of caution... MEMMAKER using Custom Setup and 386MAX using Full Maximize, maps into the monochrome memory area (B000 - BFFF) which may give some SVGA cards fits. I also had plenty of trouble getting 386MAX to coexist with Stacker. Remember, I have an unusual situation with C: and D: drives using DBLSPACE and E: and F: drives using Stacker. 386MAX provides a detailed procedure for installation with Stacker. However, the procedure assumes that the boot drive uses Stacker and I'm currently using DBLSPACE on my C: drive!

What does all of this mean to you and me? I achieved the best results using QEMM and it is easier to use than 386MAX. I have read comparisons of memory managers where 386MAX outperformed QEMM. From my tests, I find that the results can depend on your skills in memory management and sometimes a little luck doesn't hurt. I tested the results from MEMMAKER using the Custom Setup by running two 256-color VGA graphics-intensive

programs and they ran fine. MEMMAKER, using Custom Setup, made a fine showing coming in second place while MEMMAKER, using Express Setup, had little improvement over DOS low. I did not try to improve on the results that I achieved with MEMMAKER using Custom Setup. I believe that I may be able to improve on these results and that of QEMM if I use its Stealth Technology judiciously. For all you MS-DOS 6.0 users that have performed little or no memory management, you now have a powerful tool to achieve impressive results.

SIGNING OFF

As Harv Haight mentioned in last month's README.DOC, I know of two club members that didn't get into the MS-DOS 6.0 Rollout. I had a good time rapping with Harv and others, but I almost didn't get a T-shirt and that would have made the evening a complete disaster. By the way, I want to thank you for calling me a pretty sharp youngster, Harv. I appreciate the compliment, even though I had a hard time getting out of bed this morning without taking some back pain relievers!

My daughter came to see me on her Spring break and brought her 286 computer so that I could install my old 80 MB Conner drive along with her 40 MB Western Digital drive. I didn't have the setup information for Western Digital but the appropriate jumper block has only 6 pins so there could only be nine combinations to try. I tried all of them and could not make the two drives work together. I started calling a number of club members to get the setup information. Bob Basaraba pointed out that Western Digital's local telephone number has 24-hour touch tone menus, so I gave it a try.

After 10-15 minutes of moving through various menus, I received the setup information. I gave it another try and still could not get the two drives to work together. I turned my attention to installing the two drives into the drive bay. I found out that the two drives would not fit into the available drive bay space unless I decided not to bolt down one of the drives. I decided to install my 80 MB drive only and installed MS-DOS 6.0 and invoked DBLSPACE, giving me about 130 MB. I restored the original 30 MB back into the drive and then installed 8 new games. A quick check showed that there was only 28 MB left on her drive! The 8 games take up an average of 9 MB per game! ■

MEMORY MANAGER	BYTES FREE	LARGEST FREE BLOCK	COMMENTS
1. QEMM 6.0	589,328 (576K)	0 K	OPTIMIZE
2. DOS Low	469,424 (458K)	76,976 (75K)	NO MEMORY MANAGEMENT USED
3. MEMMAKER	470,208 (459K)	72,736 (71K)	EXPRESS SETUP
4. MEMMAKER	583,072 (569K)	2,880 (3K)	CUSTOM SETUP
5. 386MAX	506,496 (495K)	0 K	EXPRESS MAXIMIZE
6. 386MAX	570,048 (557K)	0 K	FULL MAXIMIZE

LEARNING TO FLY



Richard Baznik

In talking with a teacher from the Long Beach School District recently, I was struck with the problems which educators and a club like OCIPUG have in common.

"The trouble is," she complained, "we're supposed to give these kids the tools they need for a good life and we don't even know what technology they'll have to contend with even five years from now."

"Yes, same with us, except that neither of our problems stop with the technology," I said. "At OCIPUG we spend hour after hour chasing new hardware. New software programs are thrown at us every month, and they just assume we'll know what this stuff is for." I was getting a little worked up. "No one wants to *insult* us by suggesting we don't know what to do with it. It's just nice to have."

"But at least you know about things like modems and *talking* to other computers."

"That's only one side of the coin." I was really getting into it now. "On the other side, we know how to connect to almost anywhere but haven't a clue as to what to say."

"Yes. Sort of like having the key to a library without knowing how to read."

Real Time or Paper Time?

Most of us are pretty much *paper trained* at an early age. Report cards come out *quarterly*. Newspapers are read *daily* and almanacs are issued *annually*. As Alan November, a noted national technology consultant to educators put it, "Unfortunately, paper—the primary technology that drives most of our curriculum—is not a *real time* technology...Being paper trained, we think in *paper time*."

Report cards are traditionally used to inform parents and children how they did during the preceding period. But today, applying the concept of *real time*, things take a decidedly different turn, as we learn from this report, from *Electronic Learning*, a publication serving as one of the educators' windows on technology:

"A teacher in Anchorage, Alaska, has used real time parent conferences to dramatically improve his students' performance and discipline in his class. How did he do it? He went out and bought himself a cellular phone. Now, when a student has achieved something in class, he asks the kid to call a parent at home or work to share the achievement. After the student tells his parent what he accomplished, the teacher gets on the phone to praise the kid and the whole class cheers—real time parental involvement."

We're now told that the sum total of human knowledge *doubles* every 18 months! No wonder the emphasis in edu-

cation has changed from memorizing large bodies of knowledge to knowing how to collect and organize information for evaluation and implementation. The question, "Do you know the answers?" has been replaced with, "Can you handle it?" Everything seems to be speeding up. A recent article in the *Orange County Register* proclaimed that if your world atlas is more than 3 months old it's hopelessly out of date! With the body of human knowledge manifestly beyond us, we are forced to take on information strictly on a need-to-know basis. Fortunately for us, the computer itself, one of the results of this knowledge explosion, embodies the technology we need in order to cope.

In another quote from *Electronic Learning*, we learn:

"Students in a Eugene, Oregon, Talented and Gifted (TAG) class used an electronic bulletin board to poll 979 students nationwide about their attitudes towards the [former] USSR. The class members not only found the answer to their question, they also learned how to construct a survey and compile statistics to show their results. Teacher Tim Goss has access to three major networks on the school's Commodore 64 computer: Quantum Link, McGraw-Hill Information Exchange and Because It's Time Network. The TAG students also use the networks in their studies. They took part in an energy survey by collecting their home utility bills and comparing them to students' (bills) from other parts of the US. They also researched the nationwide problem of homelessness and learned how to help the homeless in their area. Goss credits telecommunications (to be responsible for)...the greatest change in his teaching style."

Librarianship for the Computer Literate

The transition to using the computer for life-fulfilling, if not life-sustaining tasks is fraught with difficulties, especially for the paper-trained among us. We have to know where the answers are kept *before* we know the questions.

Consider this all-too-familiar scenario: You're pulling together an analysis, for a 9:00 a.m. meeting tomorrow. You've run into a problem with your spreadsheet and it's 11:00 p.m. Pacific Time—too late to call the software maker. Frantically you grab the documentation, reach the index and realize you don't know what the application *calls* this particular feature! Urggh!! You can't pick the right ball when you don't know the name of the game.

Look at just a partial list of skills urgently needed in this survival course for the computer literate:

- Know how to locate data by the use of significant, defining words, wildcard words, and Boolean logic, of a subject in which we *are not expert or even conversant*.
- Classify information into file types, such as word processing, database, spreadsheet, project management, etc.
- Understand that our time frame may have to extend from Pre-History (Archaeology, yet!) through to Current History (10 minutes ago) in order to be meaningful.

In short, for us to function as responsible adults and role models for our children and grandchildren, it will require more than our hardware and software knowledge. It will require a large body of what might be called lookup knowledge or librarianship for the computer literate. Only then will the computer come even close to fulfilling its promise as, *The Machine That Changed the World*.

In a fast-moving, state-of-the-art club like OCIPUG, we must decide whether near-exclusive focus on the *means* of computerization is enough, or whether we should begin considering the *ends*. Put another way: Do we continue tinkering with the carburetion, or do we race; do we concentrate on jet engine turbodynamics, or do we fly! ■

PRODUCTS FOR REVIEW

Jean Stevens, Editor

The products listed below are available for review by Club members. If you would like to be a reviewer for any of these products, or want more information, please give me a call at 644-1017.

The ground rules are that the reviewers are required to write a minimum 300 word review for *README.DOC* within thirty days of receiving the product. Upon receipt of a satisfactory review, the product then becomes yours to keep, subject to the manufacturer's license agreement, restrictions and limitations. These are complete applications with documentation, not demo disks.

SOFTWARE

XTree Windows - Ver. 1.5 - A file management program.

Laplink V - A file transfer program used to transfer files between PCs.

MS-DOS 6.0 Upgrade - The latest version of the operating system.



General Meeting

Terry Currier

May 29 will bring us a showing of GeoWorks 2.0, and Dr. John Goodman talking about his new book *DOS 6 Power Tools*. GeoWorks, of course, is a great program that does just about everything for the user. It has a word processor, drawing, communications, roladex, planner, games, AND banner making programs. Its printing ability can make your dot matrix look like a laser printer. All this, and it is a true multi-tasking program that can run on any processor including a 8088. How can they improve on this? Well come to the meeting and see. Just looking at the GeoWrite module, here are some of the things it will do:

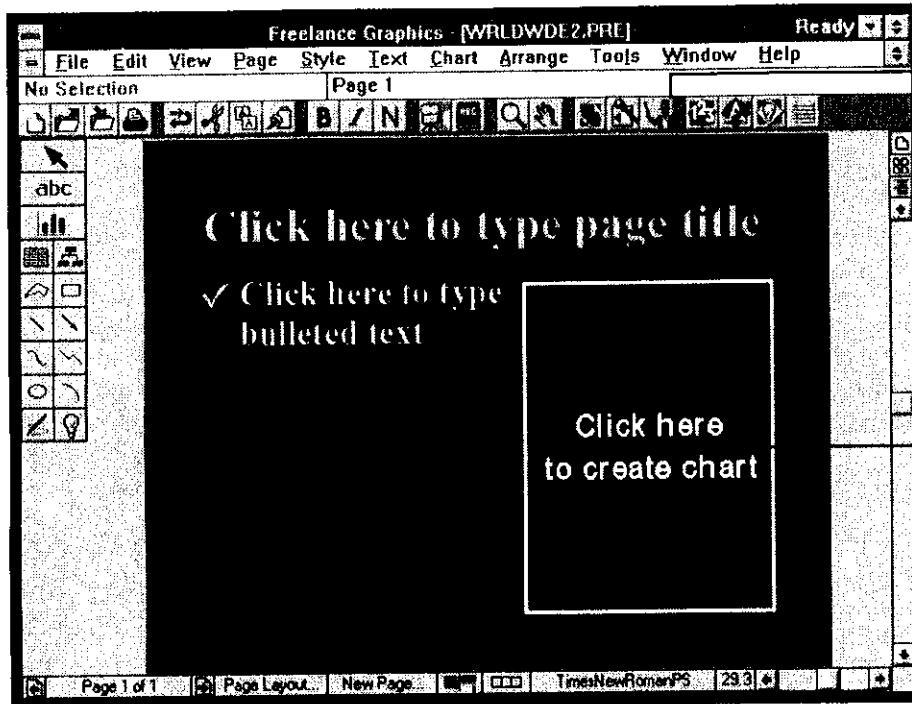
- True WYSIWYG word processor both on screen and on paper
- Graphics layer for direct graphics manipulation in documents with bitmap drawing, object drawing, gradient fills
- Customizable tool bars
- Multiple page sizes and types
- 1 to 32 columns
- Wrap text around graphics
- Drag and drop text editing
- Import/Export ASCII, Lotus 1-2-3, MS Word, WordPerfect, WordPerfect for Windows, WordStar, and XyWrite

John Goodman, for those that don't know, is a past President of OCIPUG. His latest book *DOS 6 Power Tools* is full of tips and other useful information on using DOS 6.0. Keep in mind though, that you don't have to be using DOS 6.0 for this book to be helpful because it covers all versions of DOS. John will be selling his book at the meeting and will be happy to sign it for you. ■

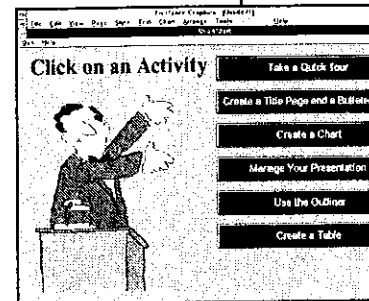
The Program Committee will meet at 2:30 pm after the General Meeting at the SIG Space.

*Coming in June:
Auction!!!*

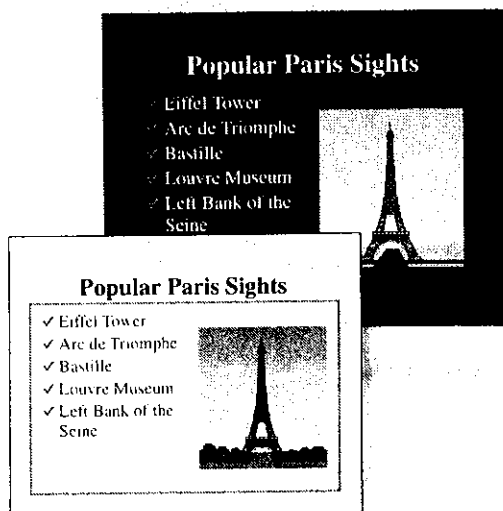
New Freelance Graphics (Especially the decision



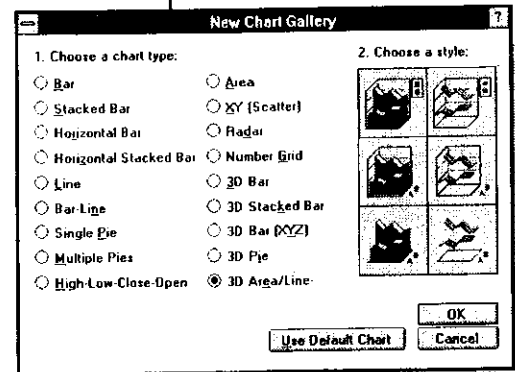
Single-click access to powerful presentation tools makes Freelance Graphics easy to use.



Just click to view the animated QuickStart tutorial. It walks you through your first presentation in under 30 minutes.



Just click to instantly see your presentation in color or B/W. It's automatically optimized for printing both.



Just click to browse through a gallery of 108 ready-to-go chart styles including new 3-D line, 3-D area and radar selections.

2.0 makes everything easy. (to leave Harvard Graphics.)

If you've been using Harvard Graphics[™] for DOS, maybe it's time to make a change.

Introducing Freelance Graphics For Windows,[™] Release 2.0.

The first release of Freelance Graphics[™] won every major award in the presentation graphics category in 1992. And users agreed in two recent studies by the Usability Sciences Corporation that Freelance Graphics was easier to use than Harvard Graphics for Windows or Microsoft[®] Powerpoint[®] 3.0.

Now, in Release 2.0, we've built on the innovations of the first release, adding many ease-of-use enhancements and exciting new capabilities. And we subjected every enhancement to rigorous usability testing. The result is the fastest, friendliest, and most intuitive presentation software available today.

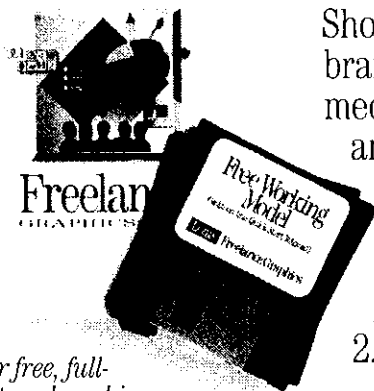
There's No Easier, Faster Way To Create Presentations.

Only Freelance Graphics includes SmartMasters,[™] which automatically guide you through every step of the design process.

All you do is select the look you want for the entire presentation, choose a page layout, and fill in the blanks. It's that easy. And now, to give you even more possibilities, Freelance Graphics offers more SmartMaster designs and page layouts than ever before.

Other new enhancements include: full functionality for tables and organization charts; Speaker Notes; special text effects such as automatic build slides; Screen Show features like branching; multi-media capabilities; and easy import of your files from Harvard Graphics for DOS (Versions 2.3 and 3.0).

Getting Started.



Our free, full-featured working model will prove that it's time to switch to Freelance Graphics 2.0.



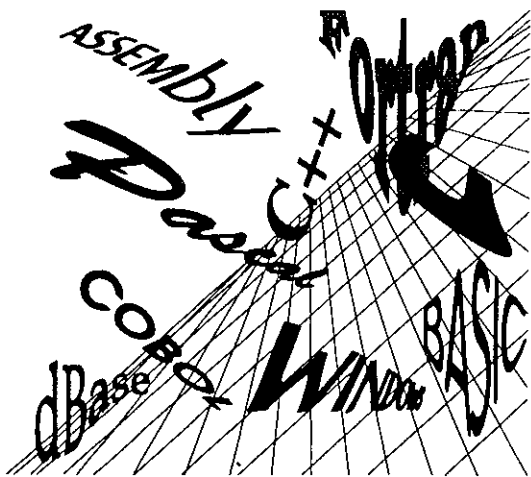
Release 2.0 has already won PC Computing's coveted MVP Award.

If You're Using Harvard Graphics, Make The Switch Now.

Call **1-800-872-3387, ext. 8403** for your free, full-featured working model, and ask about our special competitive upgrade price. And remember that Freelance Graphics is included in Lotus[®] SmartSuite[™] four award-winning Windows applications at a great price.

Lotus Freelance 2.0

Presentation Graphics for Windows



Introduction to Programming

Wendy Sarrett

Introduction

This month we will continue our discussion of document-centric applications and MFC (Microsoft Foundation Class) 2.0. In particular, we will review the key concepts involved in such applications and how they relate to each other.

There are two key structures involved in an MFC 2.0 document-centric application. The two most important are the document and the view. Other important concepts include serialization and data.

The Application Object

All MFC applications contain an application object derived from `CWinApp`. It is the class that usually owns all your other major classes. More specifically, one creates the document template and, in turn, its associated doc class, frame Window (a Multiple Document Interface (MDI), child Window in the case of MDI, and a frame Window in the case of Single Document Interface (SDI)) and view. One creates a document template using the `AddDocTemplate` call, passing it the result of the `CMultiDocTemplate` or `CSingleDocTemplate` constructor. Finally, one calls `RegisterShellFileTypes` to connect the document classes to the Windows File Manager. According to Microsoft's documentation, this will allow File Manager to access files created by the application.

The Document Template

The document template is the connecting point for the document, view, and frame. One creates a document template for each type of document your application will support.

The Document

As the name implies, the document is key to a document-centric application. It, in essence, provides the interface between the data your application manipulates and the view that allows you to manipulate it. The application's data is, in fact, a member of the document class. The document class provides functions to manipulate documents and the views attached to them. It also allows one to access the document template managing it.

The View

A view is the interface between a document and the screen or printer. A document may have a number of views. However, a view can only have one associated document. In addition, one always associates a view with a frame Window derived from `CFrameWnd`. If you have been using MFC 1.0 then you are already familiar with `CFrameWnd` and its derived classes. The frame Window serves as the program's access to the screen. The key function is `GetDocument`. One uses this function to access a document via the view. In addition to `GetDocument` it provides functions to handle paint messages (`OnDraw`) and a number of other functions to handle printing.

Serialization

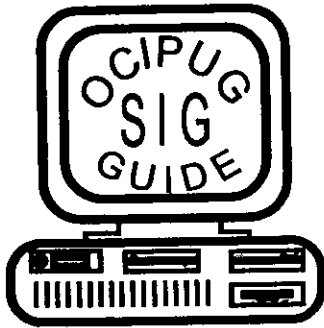
Serialization is the act of storing or retrieving the data included in the document. Microsoft's documentation defines it as the act of making data persistent between work sessions with the program. The *Open*, *Save*, and *Save As* menu items require little programming when one uses serialization. Objects derived from the `CObject` class (for example a `CObjLst`) contain the serialization call. Thus, derive your data object from the `CObject` class (or one of its derivatives) if you want to take advantage of serialization. The serialization call requires, as input, an object derived from the `CArchive` class. The Microsoft documentation describes the `CArchive` class as a binary input/output stream. An archive object may include not only simple data types but even data types derived from `CObject`. You always attach an archive object to a file. Thus, serialization is simply linking a data structure derived from `CObject` to a file. A programmer no longer needs to handle low level file I/O.

The actual `serialize` call is the following:

```
CObject::Serialize(CArchive & ar)
```

Data

The data is the heart of any program. The document class ties the data to the view. One declares major data items in the document class. It is connected to the hard drive via serialization.



Orange Coast IBM PC User Group SIG GUIDE

A Calendar of Special Interest Group (SIG) Meetings & Special Events of the Orange Coast IBM PC User Group (OCIPUG).

For more information on membership, write to OCIPUG at PO Box 6100-211, Costa Mesa, CA 92628. Call Voice Hot-Line - (714) 843-2048 or BBS - (714) 843-0388

	SUN	MON	TUE	WED	THU	FRI	SAT
May	30	OCIPUG Board Meeting 6:30 PM	Spreadsheet	Multimedia	FrameMaker		New Users 9 AM DOS 1 PM
	6	WordPerfect	Modem	Network	Graphics		RealEstate 8 AM; H.B.F.V. Assoc. of Realtors Programming 12 ^{9 AM} OS/2 1 PM
June 1993	13	MS Word	GeoWorks- 4PM BBS	Windows 3.1	Windows Drawing 6:30PM; Graphics Resource Center Ami-Pro	Database Review	3D Studio/ Animator Pro 10 AM
	20	Genealogy	Personal Finance	dBase III & IV	Hardware	GeoWorks Pro	OCIPUG General Meeting O.C.C. Science Hall 26 ^{9 AM}
	27	OCIPUG Board Meeting 6:30 PM					
Jul		28	29	30	1	2	3

Vendor's Demonstrations at June SIGs: **Symantec** (Norton Utilities) at the DOS SIG - June 5th; **WordPerfect for OS/2** at the OS/2 SIG - June 12th.

Tentative Vendor Demonstrations at June SIGs (Check the Hot-Line): **Trend Micro Devices** at the Network SIG - June 9th; **Spin-Rite** at the Hardware SIG - June 24th.

All Special Interest Groups (SIGs) are held from 7 PM to 10 PM at our SIG SPACE, located at 17632 Metzler Lane, Suite 211, Huntington Beach unless otherwise listed.

3D Studio/Animator Pro 3rd Sat
SIG Leader: Bob Weil (714) 953-2218
This SIG covers *3D Studio and Animator Pro* with discussions on various related hardware and software products. **Check the Hot-Line for the topic.**

Ami-Pro 3rd Thu
SIG Leader: Stan Sabin (714) 968-7307
This SIG covers *Lotus Ami-Pro for Windows*. **At the June meeting we will work on new macros, charts and outlining, and share tips & tricks.**

BBS 3rd Tue
SIG Leader: Bob Ottke (714) 759-1515
Monthly work party on the BBS. Meet in the office area of the SIG SPACE.

Database Review 3rd Fri
SIG Leader: Terri Hansen (714) 536-3423
This SIG looks at a variety of databases. **In June we will continue to look at the fundamentals of database theory and design.**

dBase III & IV 4th Wed
SIG Leader: Bob Schmiedeke (714) 536-3963
This SIG specializes in *dBase III and IV*. **At the June meeting we will continue to demonstrate and explain the new dBase compiler, and have a lively random access.**

DOS and Utilities 1st Sat
SIG Leader: Chris Lloyd (714) 894-4837
Designated Guru: John Goodman (714) 895-3195
This SIG covers *DOS*, helping you to take command of your PC. **At the June meeting Symantec will present Norton Utilities for DOS and Norton Desktop.**

FrameMaker 1st Thu
SIG Leader: Jim Hunter (714) 843-0555
This SIG covers *FrameMaker 3.0*. **At the June meeting we will have the first in a series that will review good desktop publishing techniques and we will cover the design of letter heads.**

Genealogy 3rd Mon
SIG Leader: Stan Sabin (714) 968-7307
For beginners to experts. If you know a little about Genealogy or a lot this SIG is for you. **In June we will be creating and showing different ways to use GEDCOM files and share tips & tricks.** Please bring your questions. Everyone welcome!

GeoWorks 4th Fri
SIG Leader: Bob Basaraba (714) 559-6539
This SIG covers *GeoWorks Pro* and related topics. **At the June meeting we will continue the review of the new GeoWorks Pro Ensemble 2.0**

GeoWorks (Daytime) 3rd Tue
SIG Leader: Paul Fuller (714) 662-7801
SIG Leader: Reg Roberts (714) 642-5399
This 4 P.M. SIG covers random access for beginners in *GeoWorks Pro*. Bring your problem files on a disk and we will work on them. **At the June meeting we will look at the installation options for GeoWorks 2.0 and demo the changes from GeoWorks Pro.** Its a whole new program.

Graphics 2nd Thu
SIG Leader: David Carroll (714) 775-3130
Designated Guru: Dave Lorenzini (714) 496-3050
This SIG covers hardware and software products in computer graphics and animation. **At the June meeting we talk about the computer animation done for the May 15 CBS special. How it was done by Dave for Spiros Partners and the products used to do it.**

Hardware 4th Thu
SIG Leader: Bob Basaraba (714) 559-6539
This SIG is one of the most popular, judging by the strong attendance. **James Ralph of Gibson Research is tentatively scheduled to present Spin-Rite at the June meeting.**

Modem 2nd Tue
SIG Leader: Bob Ottke (714) 759-1515
Reach out and access the whole world of information through telecommunications. **At the June meeting we will look at the Compuserve Information Manager for DOS and for Windows.**

Multimedia 1st Wed
Co-SIG Leader: Dave Carroll (714) 775-3130
Co-SIG Leader: Richard Williams (714) 891-8795
This SIG covers hardware and software products for use in Multimedia presentations, including the new MPC specifications. We will cover end-user applications and development tools. **At the June meeting we will review the new game "The 7th Guest". This game requires 2 CD ROM disks for distribution.**

Members & Non-Members are welcome at all of the SIGs

New User/New Member 1st Sat

SIG Leader: John Lunsford (714) 995-0947

This is the best SIG to attend first. The meetings run on a repeating 4-month cycle, this month the **second** of the four presentations will be given. You may start at any point in the cycle.

Network 2nd Wed

Co-SIG Leader: Michele Miller (714) 842-9925
Co-SIG Leader: Larry Tseung (714) 552-7618

The next few meetings will focus on the latest trends & concepts in the field of networking. **We will tentatively have Trend Micro Devices, Inc at the June meeting with their anti-virus software and hardware. The hardware looks at behavior patterns and protects against new viruses. Check the Hot-Line for more details.**

OS/2 2nd Sat

SIG Leader: Steve Schiffman (714) 531-0376
Designated Guru: Dave Lorenzini (714) 496-3050

Come learn about what OS/2 is all about and what this new operating system can do for you. **At the June meeting we will have a preview of WordPerfect 5.2 for OS/2.**

Personal Finance 4th Tue

SIG Leader: Max Lockie (714) 644-0103

This SIG discusses the various financial packages for the PC. **At the June meeting we will look at Microsoft's "Profits", for use by small businesses.**

Programming 2nd Sat

SIG Leader: Wendy Sarrett (714) 733-9906

This SIG covers various aspects of programming and programming languages. **At the June meeting we will look at Microsoft's Visual Basic 3.0, if it has been released. If not, we will look at OLE. Members can get a free copy of the standard edition of VB 2.0 at the June SIG.**

Real Estate 2nd Sat

Contact Person: Kent Pierce (714) 536-0271
Contact Person: Tom Sutro (714) 754-7045

Meets from 8 to 10 AM at the Huntington Beach - Fountain Valley Association of Realtors, 8101 Slater Ave. (just east of Beach Blvd.), Huntington Beach.

Jointly sponsored by OCIPUG and several local Boards of Realtors, this is one of our largest SIGs. **At the June meeting we will review the real estate program The Profit Center.**

Spreadsheet 1st Tue

SIG Leader: Neil Carman (714) 964-1901

This group covers popular spreadsheet programs, including *Microsoft Excel*, *Lotus 1-2-3* & *Quattro Pro* and shareware products, for both beginners and advanced users. **At the June meeting we will look at the CD ROM version of 1-2-3 which includes multimedia help. We will also look at Search and Replace in Quattro Pro and the Drag and Drop tool bar in Excel.**

Windows Drawing 3rd Thu

SIG Leader: Steve Burnside (714) 544-5599

Meeting starts at 6:30 PM. at So. Cal. Graphics Resource Center, 38 Corporate Park, Irvine - Near Jamboree Rd. & Alton Pkwy.

This SIG covers intermediate and advanced topics relating to *Core!DRAW!* and other drawing packages. **At the June meeting we will look at Core!Draw! 4.0.**

Windows 3.1 3rd Wed

SIG Leader: Dave Black (714) 830-9203
SIG Leader: Richard Villa (714) 841-6991

This SIG covers the *Microsoft Windows 3.1* and *Windows NT* operating systems with discussions on various related hardware and software products running under *Windows*. Please come with your questions. **At the June meeting we will look at new shareware and commercial Windows products.**

Word 2nd Mon

SIG Leader: Dave Lorenzini (714) 496-3050
Both *Microsoft Word for Windows* and *Microsoft Word 5.5* for DOS are powerful and popular word processing packages. The *Word* SIG covers each of them. **At the June meeting we will look at "Mailing Labels are a Cinch in Word".**

WordPerfect 1st Mon

SIG Leader: Susan Novak (310) 594-4144
W-(310) 491-3081

Contact Person: Jeff Sinn (714) 775-2390

Come and learn about this popular word processing package. **Check the Hot-Line for the June meeting topics.**

Join us at the General Meeting and the SIGs that interest you

Saturday, May 29th, 1993 - 9:00 AM to Noon

GENERAL
MEETING

GeoWorks - GeoWorks Ensemble 2.0 John Goodman - DOS 6 Power Tools

8:40 to 9:00 AM - Random Access time!
Ask questions, and get answers.

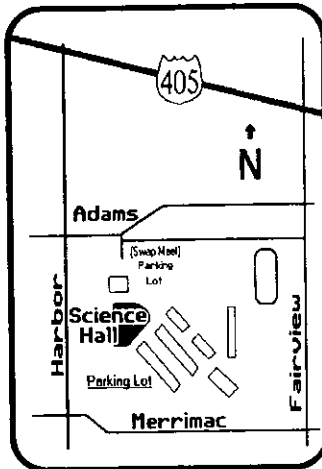
MEETING
LOCATIONS

Orange Coast College in Costa Mesa

2701 Fairview Rd.

**General Meeting
in Science Hall**
(next to the
Chemistry Bldg.).

Parking in campus
lots is available off of
Adams, Merrimac
or Fairview.

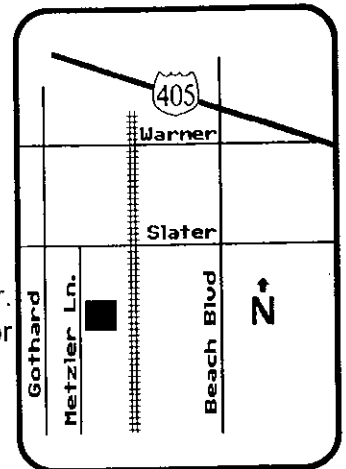


OCIPUG's SIG Space in Huntington Beach

17632 Metzler
Lane (Park Central).

**SIG Meetings in
Suite 211.**

Take the elevator
to 2nd floor, enter
at 1st door, turn
right at 1st corridor.
Parking in the lot or
on the street.



MEMBERSHIP
INFORMATION

Orange Coast IBM PC User Group (OCIPUG) was formed in 1985, and has become one of the largest and most respected User Groups in the country.

OCIPUG, a non-profit corporation, is an all-volunteer organization which provides PC enthusiasts with an opportunity to gain knowledge and gives assistance to those who need it.

Membership includes:

- ✓ a subscription to *README.DOC*, OCIPUG's monthly newsletter.
- ✓ discounts on Public Domain, Shareware and User Supported software.
- ✓ access to OCIPUG's area code 714 private telephone line Bulletin Board.
- ✓ eligibility for the raffle at the monthly General Meeting.

If you would like to become an OCIPUG member please call (714) 843-2048 and request an application for membership, or write: OCIPUG, PO Box 6100-211, Costa Mesa, CA 92628-6100.

OCIPUG SIG GUIDE camera ready copy produced with: Microsoft Windows 3.1, Aldus PageMaker 4.0, Corel Draw! 2.0, Professional Draw & Publisher's Paintbrush for Windows using an HP LaserJet 4M. Graphic illustrations by Richard Villa, Steve Burnside, David Carroll & Walt Strong.
SIG Chairman and SIG Guide publisher: Walt Strong - (714) 557-7008.

- Deadline for the June SIG Guide Calendar: Friday, May 5th.

Putting It All Together

As you can tell from the previous discussion, a lot of document-centric application creation is understanding the communication path between data and the screen or printer. Closest to the machine is the data. One declares the major data objects in the document class and accesses them from document class as well. In order to take advantage of serialization, it is best to derive your major data from the CObject class. The document and its views communicate via various functions that are part of their respective class. You manage the relationship between the user interface (screen, printer) and the program, from the view. The derivatives of CDocTemplate - usually CSingleDocTemplate or CMultiDocTemplate manage the relationship between document, views, and the frame Window (that the view accesses). You create document templates in the InitInstance function defined for the Windows application class (class derived from CWinApp).

Conclusions

These are the major pieces of a document-centric application created using MFC 2.0. As we mentioned in the previous article, Visual C++ includes tools to make this job easier. Especially useful are the AppWizard and Class Wizard that we previously touched upon. Now that we have discussed the fundamentals of MFC we are ready to delve into these tools in greater detail. ■

INCREASE YOUR ANNUAL DUES? NOT!!

But, OCIPUG is in need of your support! The recession has hit every organization hard, including Orange Coast IBM PC User Group. The publication costs of README.DOC (paper, printing, and postage) have risen significantly, not to mention rent increases for our Special Interest Group (SIG) sessions. We are also in need of additional equipment for the SIG Space. Please help keep our great Club in the black by digging deep into your pockets and sending your contributions to:

OCIPUG
P. O. Box 6100-211
Costa Mesa, CA 92628

Any amount will be most appreciated. It's YOUR CLUB so let's keep it financially healthy!

Helpful Tip On Unlocking A Password Protected Document

Audrey Wolden

Recently, I left a message on the BBS about the problem I had after editing a WordPerfect document in XGold. I never dreamed changing one character would lead to a locked keyboard and the message *Enter Password...* etc., when I returned to WordPerfect. So, in case anyone's foolish enough to make the same dumb mistake I did, here's how to get yourself out of it. The one thing I can't tell you is how to get out of the locked keyboard situation without using Black Magic, Voodoo, or pounding the *Exit* and *Enter* keys and screaming at the computer, as I did. Maybe you can just turn it off??

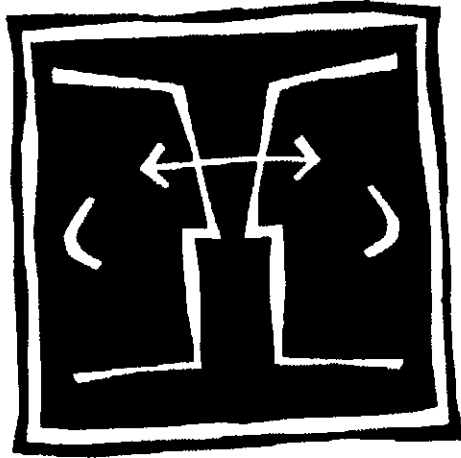
The idea is since you can't get into your document in WordPerfect, you must go back into XGold and use VIEW, then GATHER followed by RETURN to move the cursor up from the first line of your document to the top, deleting all DOS/machine codes from your document. After that, you will see the following message on the screen: *Append marked text to file: (blank)* Give the document a new name and return to WordPerfect. Then all you have to do is edit your document to restore the WordPerfect codes.

If you do not wish to keep the document you can simply delete it in XGold, of course. You cannot access the document in WordPerfect until you have removed the machine language.

Editing the document to restore word processing codes, such as paragraphs and dashes, is another chore. The speaker at last Monday's WordPerfect SIG presented a Shareware program which may accomplish this more easily than doing it manually. He said he was going to put it on the BBS, in the files section. I believe it is called WPTOOL51.ZIP. Sorry I can't be more specific about this Shareware utility program. That is another subject altogether. But it shouldn't be hard to look it up....Better yet, I suggest you not make the same mistake I did in the first place. ■

Microsoft's User Group Summit

Terry Currier



Microsoft invited the top 40 user groups in the USA to a User Group Summit April 22-24 and OCIPUG was one of them (honest). We met at what Microsoft (MS) calls the Microsoft Campus. MS showed some of its latest, greatest toys, about half of which were on non-disclosure so, like Bart Simpson, I didn't see it and no one can prove anything. Most of the speakers and programs presented were very entertaining.

Of course, the main event was an hour with Bill Gates. I've always been impressed with the way he handles questions at user group meetings. He can discuss a range of topics from the financial matters of MS to why they didn't put a certain command in DOS.

Bill Gates

Pen and CD-ROM will take off and be an important part of future computing. On-line computer services will be leading the way to a computer society. MS will be in there extending Windows with databases, and getting into telephone usage. The home computing market will be the largest division within Microsoft in 3-5 years.

Software Prices

Current discussion in the industry

is having the price of a software package be the bare minimum. Then, if the user wanted any support, they would call on a pay as you go basis. MS has no plans to do this. MS paid \$160 million for support last year.

On Standards

MS has 40 programmers writing code that is just

given away. He made an interesting comment when he observed that the press says a lot about MS being secretive with code, but no one says anything about Apple.

Compression

When asked if Windows NT will read a DoubleSpace disk, he said, "No." He expanded on another question about boards that do a greater compression ratio. MS is always looking at other programs that will do compression. Examples are those that will do image compression, but the limitation is that they are to a specific type. It's very hard to be great at a random type of file; that is, compress everything from database files (easy), to tiff (hard).

New Computers

Would like to see more computers have built-in ethernet. They have a number of people working on software for the handicapped. Vision impaired programs are the hardest to do. Speech recognition will come later, but much work is being done now. Later they showed us the MS Voice Pilot program that can be used to verbally instruct Windows on what to do. I saw this at Comdex; it was developed by Dragon Systems. Multimedia will be added to many of

the new systems.

New Applications

Companies either under- or overshoot as to what will work. A while ago most companies did not believe in the Windows platform. Most of the programs now written are for 386 Windows with a target of 4 Meg of RAM. Gates asked what we thought of timed updates—where the user could expect an update to be out on a certain program based on the date of the product—such as Excel 693 and then the next update as Excel 695. A number of those present liked it, but the more I think of it, the less I like it. This would lend itself to many problems. A product could have bugs, but there may be pressure to get it out by the set date. Windows and DOS 7, the next version of DOS, will be for the user who still feels no need for Windows, yet wants a full 32 bit path.

Consumer Products Division

They showed us some interesting programs under non-disclosure agreement, with the exception of Profit, a program much like Intuit's Quickbooks for Business. I mention this because the speaker was good and had a sense of humor. When they reminded us of the NDA he yelled out, "Except Profit—tell it to the world."

Michael Risse on Visual Basic

There will be a new Visual Basic out May 14. They invited anyone with a satellite dish to watch the rollout.

Brad Chase, DOS Product Manager

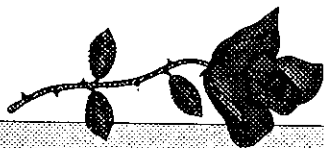
He showed us some neat tricks with the new MS DOS 6.0, such as how to see if MemMaker is getting

the most out of memory. Path prior to DOS 6.0 was limited to 128 characters but with 6.0 you can use up to 255 characters. I was told this was also shown at our April General Meeting (path command). It was kind of funny to see the user group people beat up on the DOS staff about getting commas into the statistics—CHKDSK would say 102,629,324 bytes total disk space.

Visio

Shapeware also came and showed us Visio. When I first heard of the program at Comdex, I was told it was a flowcharting program. I didn't think it sounded very interesting. But after seeing it demoed I was really impressed. This truly is, as they say on the box, "Drag and drop drawing for everyday graphics." Many of us got a demo disk, either mailed or given to us at the DOS 6.0 rollout. It's the Microsoft Upgrade Advisor disk and it includes a demo of Visio...Check it out.

All in all we had a good time seeing these products and discussing the operations of other user groups. ■



I have to say the User Group representatives for most of the major companies are amazing. I have received calls from the Microsoft, Borland, Lotus, and Symantec reps up to 6:30 in the evening. I've asked them, "Don't you ever know when to go home?" They work hard and give a lot of help to OCIPUG. This is not to say the others do less, all the User Group reps do a great job and deserve a tip of the hat...Thanks.

PRODUCT REVIEW

Places to Play

Terry Currier

Ram Solutions' *Places to Play*, is an electronic listing of amusement parks, ski and golf resorts, national parks, and other tourist spots. Installation is as easy as typing install and it takes up 1.8 meg of space. It's not necessary to have a mouse, but it works easier if you do. You can look up over 150 locations and find out such things as:

- Hours of operation
- Credit cards and check-cashing policies
- Guest services, including camera and stroller rental
- Travel instruction
- Lodging – stating prices, dining and more
- Weather (seasonal information)
- Maps – which can be printed out

Looking up information on casinos, for instance, will find a wealth of information. Picking Excalibur, I was shown a map of the main streets of Las Vegas and the location of the Excalibur Hotel. The listing gave the price of rooms, the restaurants, attractions, and more.

Picking Sequoia National Park, gave directions for getting there by car, at what airport to land if you were flying, even that Greyhound and Amtrack go there. When to go? "...summer months usually in the 70s and busiest months of the year. Overnight lows average 50s, and you should bear in mind that summer thunder storms are common. In winter it sets into the 20s to 40s. If you're into winter activities, this is the best time to go, for it snows all the time during the winter. For hikers, the best time to visit the park is late spring or early fall when the temps are moderate and the flowers are in full bloom." It even advises on clothing to pack.

You can search by areas and look for anything that interests you. Say, for instance, you were traveling to Florida and you wanted to find out places of interest that you could visit in that state. You would bring up Florida and it would, of course, list Disney World among other places. It would also show the golf courses (if you're into that sort of thing).

Places To Play seems perfect for those who drive and want to see tourist spots along the way. ■



Batch File Basics

Michael Springer

MS-DOS 6.0 was released recently, so let's take a look at what is new for the batch file addict.

Most obvious is the CHOICE command. You can look at the information provided by Microsoft by using the on-line help file. There is very little information about CHOICE in the *User's Guide*.

CHOICE is very similar to the KEYPRESS utility program published several years ago by *PC Magazine*. The user can supply the text for a screen prompt and specify what keys constitute a valid response. The response keystroke sets the value of the exit code which is analyzed by IF ERRORLEVEL tests.

Enhancements (compared to KEYPRESS) included in CHOICE include options to display the acceptable responses in brackets, such as [1,2,3]?, to make the response case sensitive, and to default to a particular choice after a specified time period if no keystroke response is detected. Non-optional enhancements include a warning beep for invalid responses, an exit code value of 255 for error conditions (no definition of what the error conditions are in anything I've read so far), and an exit code value of 0 for a CTRL+BREAK or CTRL+C response.

Those using the GETYES utility that sets an exit code of 255 for a response of 'y' or 'Y' will appreciate the capabilities of CHOICE but need to carefully rework the IF ERRORLEVEL statements in their batch files. Exit codes

from CHOICE are not the ASCII values of the keypresses. 255 represents an error condition, not a response of 'y' or 'Y'. The timeout feature of CHOICE can cause a batch file to proceed with the defined default selection rather than wait forever for a keystroke.

Few people consider the CONFIG.SYS file to be a batch file, but it certainly shares several characteristics of the files that we so easily let pass as batch files. Both must be plain text files. Both automate a process. As of MS-DOS 5.0, both support the REM and BREAK commands.

MS-DOS 6.0 provides new capabilities for the CONFIG.SYS file. The new commands are NUMLOCK, SWITCHES, INCLUDE, MENUCOLOR, MENUDEFAULT, MENUITEM, SUBMENU and SET. These commands make it possible to build a menu structure in CONFIG.SYS and to pass information to the AUTOEXEC.BAT file.

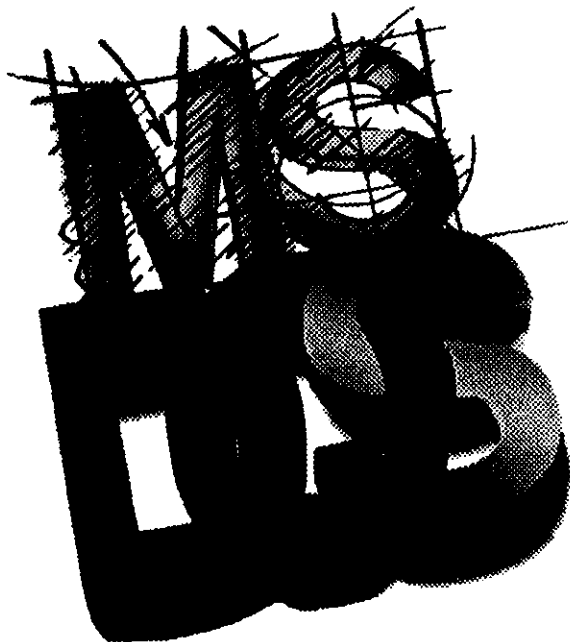
Shades of programming! That simple, straight-through, no nonsense CONFIG.SYS file can now be set up to have choices, defaults, and outcomes that link to the AUTOEXEC.BAT file so that the configuration of the computer won't be identifiable by man nor machine.

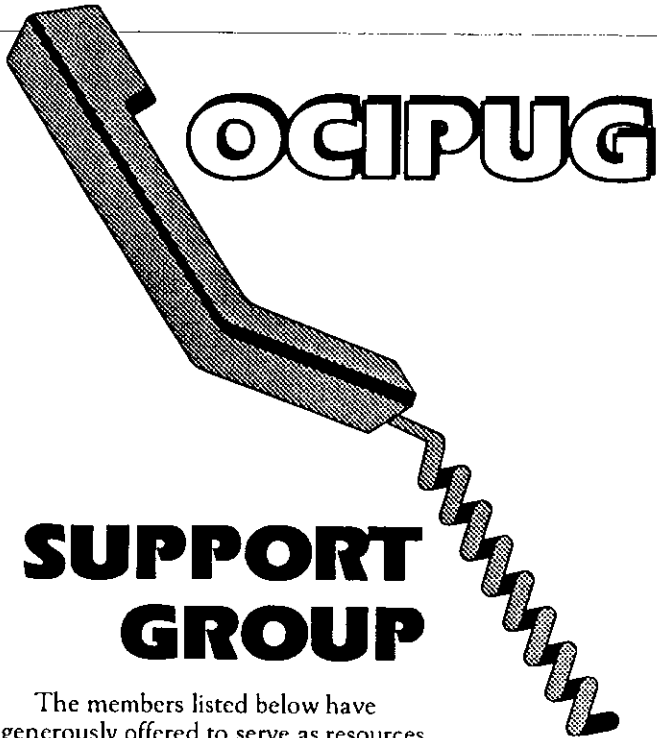
Many people have managed to set up a way to control the boot-process through several sets of CONFIG.SYS and AUTOEXEC.BAT files or via various utility programs that put the file sets in a database. This technique can still be used in MS-DOS 6.0. In many cases, it may be the best choice for the computer user who would not know what to do with an interactive, menu-based start-up.

The flexibility of an interactive, menu-based, default-timeout configuration system puts tremendous responsibility on the shoulders of the programmer. A good menu system should work for both the power user and the computer-literate user. A menu system that caters to the neophyte will probably drive the others crazy. Use the interactive approach only when it is appropriate, don't try to make it fit every situation.

All of this is old hat to some people who have been using DR-DOS 6.0. Though the details vary, similar and even more powerful capabilities have been available for about a year.

The topics of future Batch File Basics articles may have to stray into that fuzzy gray area where the programming is not limited to files that have the .BAT extension. ■





SUPPORT GROUP

The members listed below have generously offered to serve as resources for other members in need of assistance with specific hardware or software problems. They are there for you, but please bear a few things in mind:

- 1) The times listed are when these volunteers are available to assist you. PLEASE respect their times by limiting your calls to the hours indicated.
- 2) Your questions should be specific and reasonably brief. Consult your manual, tech support, etc., FIRST, so as not to take up their time needlessly.
- 3) All of our volunteers have expertise in the areas shown, but *nobody knows everything*, so be understanding by not expecting them to know *everything*.
- 4) This service is free, available to our members only. Our volunteers are not doing this for personal gain, but as a service to benefit their fellow PC users, thereby making OCIPUG a stronger organization.

Abraxas

Kevin PostAnytime 969-9495

AccPac Plus

Donna Fulmizi.....8 a.m.-8 p.m..... 897-3371

Lia Varner8 a.m.-6 p.m..... (310) 987-0632

Christian Malm.....9 a.m.-9 p.m. M-F

Anytime Wkends 966-5339

Ami Professional

Mark Burrell.....9 a.m.-12 noon 777-2130

Richard Sinor.....6 p.m.-10 p.m. 970-1323

Basic

Herb Huey.....6:00 p.m.-10 p.m. 525-1608

C & C++

Wendy Sarrett.....7 p.m.-9:30 p.m. M-F

Anytime Wkends 733-9906

Champion Business Systems

Kevin PostAnytime 969-9495

Clarion

Mark Burrell.....9 a.m.-12 noon 777-2130

Clipper

Bob Wendorf.....Anytime 892-1031

CorelDraw

John Goodman.....12 noon-12 midnight..... 895-3195

Steve Burnside11 a.m.-8:30 p.m..... 544-5599

dBase IV

Preston Hill9 a.m.-9 p.m..... 892-1291

dBase Programming

Tom Toner10 a.m.-8 p.m..... 537-9175

Digital Photography

Thurman Wade12 noon-6 p.m. 846-6067

Disk & Memory Management

Harv Haight.....9 p.m.-11 p.m..... 546-0820

Mike Wierman.....6 p.m.-9:30 p.m. M-F

Anytime Wkends 894-4040

DOS

Harv Haight9 p.m.-11 p.m..... 546-0820

Herb Huey.....6:00 p.m.-10 p.m. 525-1608

John Goodman.....12 noon-12 midnight..... 895-3195

Excel

Herb Huey.....6:30 p.m.-10 p.m. 525-1608

Mark Burrell.....9 a.m.-12 noon 777-2130

Fortran

Herb Huey.....6:00 p.m.-10 p.m. 525-1608

Genealogy

Stan Sabin.....5 p.m.-9 p.m. M-F 968-7307

Preston Hill9 a.m.-9 p.m..... 892-1291

Hardware

John Goodman.....12 noon-12 midnight..... 895-3195

Harv Haight9 p.m.-11 p.m..... 546-0820

Mike Wierman.....6 p.m.-9:30 p.m. M-F

Anytime Wkends 894-4040

Lans

Mike Wierman.....6 p.m.-9:30 p.m. M-F

Anytime Wkends 894-4040

Lotus 1-2-3

Lia Varner8 a.m.-6 p.m..... (310) 987-0632

MAS 90

Christian Malm.....9 a.m.-9 p.m. M-F

Anytime Wkends 966-5339

Off-Line Mail Reader

Steve Burnside11 a.m.-8:30 p.m..... 544-5599

PCTools

Preston Hill9 a.m.-9 p.m..... 892-1291

PAF

Preston Hill9 a.m.-9 p.m..... 892-1291

Stan Sabin.....5 p.m.-9 p.m. M-F 968-7307

PAF Disk Doctor

Ted Carpenter.....9 a.m.-12 noon 756-9346

Paradox

Jim Samuelson.....6 p.m.-10 p.m..... 472-9822

Paradox for Windows
 Jim Samuelson 6 p.m.-10 p.m..... 472-9822

PerForm
 Richard Sinor 6 p.m.-10 p.m..... 970-1323

Q&A
 Mark Burrell 9 a.m.-12 noon..... 777-2130
 Terry Currier 8 a.m.-9:30 a.m.
 7:30 p.m.-9 p.m..... 774-2018

Quattro Pro
 Preston Hill 9 a.m.-9 p.m..... 892-1291
 Mark Burrell 9 p.m.-12 p.m..... 777-2130

Quicken
 Preston Hill 9 a.m.-9 p.m..... 892-1291
 Ron Ross..... 6 p.m.-10 p.m. M-F..... 964-5137
 Anytime Wkends

Quickpay
 Ron Ross..... 6 p.m.-10 p.m. M-F..... 964-5137
 Anytime Wkends

Stacker
 Harv Haight 9 p.m. - 11 p.m..... 546-0820

Ventura Publisher
 John Goodman..... 12 noon-12 midnight..... 895-3195

Windows
 Mike Wierman 6-9:30 p.m. M-F
 Anytime Wkends..... 894-4040

Steve Burnside..... 11 a.m.-8:30 p.m..... 544-5599

Word
 John Goodman 12 noon-12 midnight..... 895-3195

WordPerfect Products
 Susan Novak 5-8 p.m. M-F..... (310) 594-4144

WordPerfect
 Mark Burrell 9 a.m.-12 noon..... 777-2130
 Preston Hill..... 9 a.m.-9 p.m..... 892-1291
 Mike Wierman 6 p.m.-9:30 p.m. M-F
 Anytime Wkends 894-4040

Linda Leydekkers 10 a.m.-4 p.m. M-F 968-0924
 Susan Novak 5-8 p.m. M-F (310) 594-4144

XTree
 Richard Sinor 6 p.m.-10 p.m..... 970-1323

(Editor's note: If you would like to be listed here as a volunteer to help with any PC-related subject please give me a call at 644-1017 or leave a message on the BBS. We need volunteers in many more software and hardware areas. The success of this program depends on your help. Jean Stevens)

COMPUTERS

HARDWARE and SOFTWARE
APPLE II - IBM and Macintosh
 Est. 1981

Same Location Since July 31, 1983 - Now 9 Years 10 Months

Hard Drives
 80Mb: \$189
 120 Mb: \$209
 170 Mb: \$249
 210 Mb: \$299
 340 Mb: \$439
 1.2 Gb: \$1199
 IDE-I/O Card:
 \$24.95

486
 Upgradeable
 Motherboard
 256K CACHE
 Board Accepts
 486-SX-25,
 DX-33, DX-50,
 DX-2 50 & 66
 \$119.95

\$1086
 Includes list right

486 add 486
 25sx for 66
 \$105 486 \$513
 33 \$266

Upgrade to
 235 Mb*
 Hard
 Drive:
 \$30

COMPUTER SIGNAL PRODUCTS

Upgradeable
 Motherboard
 486
 25 - 33
 50 &
 66 MHz



386-40 Mhz
 Upgradeable to 486
 128k Cache

- INTEL 386DX 40 Processor
- 160 Meg* IDE Hard Drive w/MS DOS 6.0*
- 4 meg RAM, expandable to 32 Mb
- 1.2 MB floppy drive
- SVGA 1 MB Card & .28 SVGA monitor
- 101 Enhanced keyboard
- Mini Tower or Small Footprint case
- 220 Watt UL approved power supply
- 1 Parallel, 2 Serial, 1 game Port
- All Documentation/Manuals Incl'd

Special Orders and Hard to Find Items

Colorado TAPE BACKUP
 120 mb
 Tape Software
 12 mos Warranty
\$169.95
 Installation available

FREE ESTIMATES

REPAIRS UPGRADES

Reasonable Rates

6/93

VISA

If you can find a lower price
GARDEN of EDEN
 WILL BEAT IT...MAYBE
 Full details in our store

714-841-4994

Fax: 848 1399
 Se Habla Ingles!

16485 Magnolia St.
Westminster, 92683
 1 BLOCK No. OF 405 FWY
 9 AM - 8PM MON-FRI..... 10 TO 5 SAT

MASTERCARD

Hardware

Tony Carnicello

April's presenter, Western Telematic, couldn't make this month's meeting. They have been rescheduled for a later date.

Since this was the Hardware SIG, there was no shortage of random access questions/comments. The first discussion was about Advanced Micro Devices (AMD) winning their litigation with Intel. The real kicker in the deal is that AMD will not have to write their own microcode for the chips they produce. They can now legally utilize Intel's microcode, which is unfortunate; it would have been interesting to see how AMD's microcode would have turned out. Some of the issues relating to the size of the microprocessor's 8K internal cache were also discussed. Depending on the cache hit and miss ratios, the cache replacement policy adopted by a particular manufacturer, and the *locality of reference* of real world software, doubling the clock speed in a microprocessor is not necessarily going to give twice as much speed overall.

If AMD were to put a 64k cache on their chip, that might make things a little more interesting. Theoretically, really tight code which had 64K for code and 64K for data, coupled with a 64K cache, would insure that the cache almost always contained the next instructions the CPU needs. This would keep the CPU from having to go off of the chip (to memory or a disk) for the next set of instructions, allowing it to run much faster.

The next announcement was that Future Domain's version 3.2 of their SCSI controller BIOS is now out. The older units had a BIOS problem that would not allow a slow boot drive and a very fast SCSI drive to work together, a situation not everyone would encounter. A member asked about the need to upgrade to the new cards and Rule #1 was invoked: "If it ain't broke, don't fix it."

Someone asked about the difference between Coldboot and Warmboot. When Control-Alternate-Delete is pressed, it's possible that some data, being left in memory, could cause a hung computer. Only a coldboot (by turning the machine off) would remedy the problem. Bob explained that hitting the Control-Alternate-Delete keys (warmboot) uses a low level software command that looks into memory to see if a *particular* byte is set to a particular value, and does a warm or cold boot accordingly.

During a warmboot, many BIOSs do not re-test the memory. There are programs on the BBS that can be run from the command line (or a batch file) to perform a warm or cold boot. Steve Schiffman pointed out that

there are four levels of resetting a computer: two each in hardware and two each in software. The two software resets are CTRL-ALT-DEL, and (sorry, I forgot). The two hardware methods are the reset button (that some motherboards don't implement correctly), and turning the machine off (this used to be known as BRS time...Big Red Switch). Also it was explained that everything above is absolutely true until one encounters a contradiction, then it's considered false (hey! I don't make the rules).

A serial-bus mouse card had been purchased by one of the attendees. An interesting piece of hardware, almost an oxymoron. Most mice are either serial or bus types, the bus mouse needing an interface card and a serial mouse simply using a serial port. It was explained that this card could have either type of mouse hooked up to it, and would still work. That was not to be the best feature of this card. It can use many different COM ports and interrupts that many other peripheral interface cards lack. This, in itself, justifies the cost of the card for someone who is running out of such things. This card is an example of good ol' American ingenuity; someone sees a need and designs a product to fill that need.

Another hardware question involved Conner drives, Steve Gibson's PARK.COM utility, and an article in *PC Magazine* written by Alfred Poor recommending that Park utilities not be used on Conner drives. This member has been using Gibson's PARK with no apparent damage to the drive. Bob suggested that Gibson Research be contacted for an answer.

One member had an old Eagle computer with two 360k drives that he had considered giving up. He tried to boot it up using DOS 5.0. It booted up fine, DIR was OK, but when he tried to type CONFIG.SYS to the screen, it hung the computer. Then, it would not boot again. The Eagle uses its own proprietary version of DOS and Bob surmised that using a later version of PC DOS may have scrambled something.

After the break, Bob and Jay Benesh demonstrated the steps used to configure each of the modems that they provided to the membership. After taking an internal modem out of the bag and setting the jumpers (and diagnosing a conflict with the I/O card in the testbed machine), a script file Bob wrote was executed from within the communications software that set all of the necessary parameters. The script files that ran in a few short minutes belied the detail and hard work put into their creation.

After successfully programming a member's earlier version of the ACEEX modem using the script files, and demonstrating a few of DR DOS's nifty features, the SIG meeting was adjourned. ■

Database Review

Derek Bradley and Terri R. Hansen

Terri started the SIG by giving an overview of what we were going to accomplish in the learning of Database Theory and Design. The goal was to design a fully functional relational database that can be used for various reasons.

The first step in designing a database is to interview the customer and determine what they want and what they need. It's important to keep in mind what expansions may be needed at a later date and try to plan for that. Because of the enormous capacity of databases, it can be difficult to have a clear, mutual understanding between the designer and the client; therefore, a great deal of time and effort must go into this process. Usually the interview/analysis process should take about 1/3 to 1/4 of the total design period. The more careful you are during the planning, the fewer problems you can expect at the end, either by the designers or the programmers.

There was a brief discussion of the differences between a flat-file and relational database. A flat-file database is defined as a collection of information that has no link or relationship to any other database; i.e., phone book. A relational database is a collection of information that has relationship(s) in other tables (files); i.e., library's card catalog. We will be designing a relational database in the SIG that will track information as it relates to a non-profit organization.

The remainder of the SIG was devoted to brainstorming. There were many ideas brought up about this new database. Brainstorming is a very important part of the analysis process by the design team.

In May, we will continue our brainstorming, and if time allows will start to define the entities to be tracked, as well as the attributes that apply. Please join us May 21st and bring your creativity with you!!! ■

WordPerfect

Jeff Sinn

The meeting began with an interesting random access session covering a wide variety of topics. One that seemed to affect several of the members was a problem with dot matrix printers with a tear-off feature: setting the top and bottom margins to some reasonable value in WordPerfect (say 1" and 1"), results in a wide top margin and almost nothing on the bottom. I had this same problem when I bought my NEC 5200 a few years ago. The parking and tear-off routines in the printer will not allow the top of the page to start even with the print head—they do this to clear the rollers. To fix this and allow you to use the top and bottom margins without mental arithmetic, try going into Paper (S)ize, in the Format (Shft-F8), (P)age menu. Then select (E)dit and make the appropriate change in T(e)xt Adjustment. For my printer, I had to change Top to 1" UP.

The first presentation of the evening was delivered by Tom Suter, who demonstrated WPTOOLS, a collection of shareware utilities for WordPerfect 5.0 and 5.1. The utilities perform a variety of functions on WP files, but Tom's favorite is FIXPRE. This program removes deleted data packets from the prefix of WP5 documents. This generally has the effect of reducing the size of WP files without any loss of data. The shareware version is on our BBS as WPTOOL51.ZIP, and when you register, you get six additional programs. Also look for MTWP.ZIP on the BBS—this is *More Tools for WP* by the same author.

We finished up the evening by having Richard Baznik show us some of the ways to do those familiar WP DOS functions in the recently released WordPerfect 5.2 for Windows. Although you will probably want to use the CUA structure eventually, you can choose to use the WP 5.1 DOS keyboard (File, Preferences, Keyboard, Select, then WPDOS51.WWK) and change the screen to draft mode (View, Draft mode) to ease the transition to the Windows version. ■

MS Word

William Domingo

At our April meeting the group was shown how to add or change buttons on the Word for Windows Tool Bar. From the Options choice in the Tools menu, select Tool Bar from the category list. A screen appears containing scroll lists of all Word for Windows menu commands, a list of Tool Bar buttons, and a list of what is presently on your Tool Bar, including the empty spaces. You select which command you want to place on your Tool Bar and which button you want to represent it. Then in the Tool to Change scroll list, select either a button to replace or blank space to fill in. First click change, then close, and your new Tool Bar button is ready for use. To show the group, three new buttons were added to the Tool Bar, one to close a file, another for file find, and one to insert an object. The group was also shown how to install some of the macros that come with Word for Windows. These macros are not installed ready for use when Word for Windows is installed, but instead are contained in a file called NEWMACRO.DOC, located in the Word for Windows directory. This file is not a document file, but actually a macro itself. Select and open this file from within Winword by using the File Open command, just like you would a document file, and an install program with a list of nineteen macros will appear on your screen. Buttons to Find Out About, Demo, and Install the macros are included. After reading about, and even testing the macros you find interesting, you select and install the macros you want from the list. Some of the macros available are Drop Caps, Smart Quotes, which puts curly quote marks in place of straight inch and foot marks, Automatic Text Conversion, Automatic Bullet and Automatic Numbering macros, Water Mark macro, and macros to launch Excel, Power Point, or Microsoft Mail, from within Word for Windows. All these macros can be assigned to buttons on the Tool Bar or any location on any pull down menu. Several of these macros were demonstrated at the SIG on a practice document.

Next, everyone in the group was given order forms for Microsoft Word Proofing Tools by a company called Alki Software Corporation. Alki Software provides a thesaurus and spell checkers for sixteen European languages making Word for Windows usable in an international business environment. Alki Software can be contacted at 1-800-669-9673.

Most of us present have used word processors as part of our jobs for many years and welcome each new feature added to previous versions, as conveniences that make our jobs easier. So we all had a hardy laugh at guru charlatans who claim that DOS ASCII text edi-

tors can be used in place of Word for Windows. The only people who would say such a thing have obviously never done any useful work on a computer in their lives. All they know how to do is play with their convoluted batch files and wouldn't know what to do with Word for Windows if they were given a copy free at the General Meeting raffle. ■

GeoWorks

Richard Black (edited by Bob Basaraba)

April's full-house meeting was opened by Michael Springer with requests for random access questions. After a few questions which Mike fielded just before Bob arrived, a brief silence descended upon the meeting. Bob suggested there were no questions because GeoWorks is so easy to use that people don't need a lot of help with it. However, he assured those attending that after he antagonized them sufficiently, there would be lots of sharing of information and they would have more questions. He was right.

While waiting for the SIG's program to strip the C drive and load his backup set from last month, Bob read a GeoWorks news release. GeoWorks was holding a developer's conference during the last week of April; conference attendees were to receive software developer's kits (SDKs)! Rah! It may soon be time to say goodbye to your Windows pains.

A discussion of how a power user might interpret and modify the GEOS.INI file included a strong recommendation to make a copy of the GEOS.INI file before editing it with an ASCII text editor. However, a .BAK extension for the copy's name could be a little risky. Many editors make backup copies with the .BAK extension and that could lead to overwriting of the GEOS.INI backup copy. Something like GEOS.SAV should be more robust.

Want to free up some disk space? Delete the xx.GEO file drivers that you don't need (e.g. drivers for printers or displays you don't have). Many, if not all, of these drivers are in the \geoworks\system directory; be careful though. Before deleting, make copies of the drivers on floppy disks (or just use GeoManager to move them to a floppy). Otherwise, if later you need a deleted driver, in some cases, you will have to reinstall GeoWorks.

Have lots of RAM? Consider using a RAM disk for GeoWorks swap files to speed operations. That is, fool GeoWorks into thinking that memory is a disk, so that it will store its swap files (virtual memory) in memory,

SIG REPORTS

rather than on disk. Ah, the fun of fiddling.

Another thing to consider is the number of internal GeoWorks file handles to use (set in the PC/GEOS option under System Preferences). Each object needs a handle, that includes files, buttons, Window edges, Window corners, etc. Any time the cursor changes to a unique pattern on screen, there is an object involved. Using up to 3,000 file handles should not be a problem on most systems but you'll have to experiment a little. (*Different memory managers can make this value different as well - Bob.*)

Of course, there were several discussions on the various flavors of DOS (MS and DR). Do you know why it is necessary to include NUL in an MS DOS path statement to find out if the path exists? The members and guests present at the meeting now know...Unlike the several different versions of MS DOS, most of DR DOS's external commands and utility programs are compatible with all versions of MS-DOS. Then there is the ability to make GeoWorks a task with DR DOS's task swapper. Want to jump quickly to another program and import or export data? No problem. GeoWorks is just another program to the DR DOS swapper TASKMax. If you have a little RAM for the swapper's to swap the applications to, swapping is lightning fast.

Check out the club's BBS for programs that allow FAXing in GeoWorks (if you have a FAX board) and a directory utility for looking at GeoWorks' long filenames from the DOS command line.

If you feel you are quicker at the keyboard and find that a mouse actually slows things down, use the keyboard to get things done. The use of key combinations to accomplish many tasks and to use menus was discussed and demonstrated. Learning the GeoWorks menu's *speed keys* is simple, since the keys are listed on the menus and all GeoWorks menus can be *pinned* or *torn off* by clicking on the stickpin icon at the top of each pulled down menu. Once the menu is *pinned* you can move it anywhere on the screen. This feature has been around since version 1.0 and is part of the OSF/Motif interface which GeoWorks and Unix X-Windows use. If you are decent at the keyboard, use the keyboard to do things quickly and use the mouse to do things that require a mouse. (The different key combinations are discussed in the manual and are worth memorizing.) Of course, like any major software package today, GeoWorks is CUA compliant. Commands like SHIFT-ARROW will select a character, SHIFT-CTRL-ARROW will select a word, CTRL-INS will copy marked text to the clipboard and SHIFT-INS will paste clipboard information into an application.

Here's an example I came up with which was not discussed: To minimize a file using the keyboard...try ALT then press the left arrow twice then ALT-N. Faster than a mouse? ALT-F9 will accomplish the same thing. In addition to ALT-F, ALT plus / * - or + on the numeric key pad activates the File menu option when ALT is released. ENTER then gives access to menu. However, some alternatives may insert characters into a document.

At next month's meeting there will be a *surprise*—join us and get a one-day head start on the General Meeting. That meeting, along with the SDK mentioned above, should prove very interesting to the GUI marketplace.

As usual, after the meeting Bob was willing to help with specific problems, albeit, a word of caution: Bob is not above coercion in getting a SIG report written. But, it was a fair exchange. ■

Programming

Wendy Sarrett

In April, David Black presented Visual C++. This exciting product is the latest in development tools from Microsoft. It contains a great number of new features including a fully Windows-based IDE (integrated development environment), AppStudio—an integrated visual design tool for dialog boxes, bit-maps, icons, menus, etc., MFC 2.0 and a number of other new features. In May, we will look at Spontaneous Assembly for C++. ■

CUSTOM COMPUTER

CUSTOM PROGRAMMER & COMPUTER CONSULTANT

For the Small Business Professional who wants to keep it SIMPLE!! You won't have to learn everything about computers. From a simple data base to multiple interconnected files. If you're tired of all the "space" talk and want to get it done in plain English, give us a call!!

WE FEATURE Q & A
Very Reasonable
Henri Pierre Laborde
(714) 895-2432

MINUTES OF BOARD OF DIRECTORS MEETING April 26, 1993

Submitted by Audrey Wolden, Secretary

BOARD MEMBERS PRESENT

Max Lockie, President	Ginger Buck
Bob Ottke, Vice-President	Robin Clark
Audrey Wolden, Secretary	Terry Currier
Linda Fox, Treasurer	Paul Fuller
Steve Burnside, Past President	Sunny Lockie
Bob Basaraba	Wendy Sarrett

BOARD MEMBERS ABSENT

Stan Sabin, excused

MEMBERS PRESENT

Dick Baznik	Ned Stewart
Terri Hansen	Walt Strong
Jim Hunter	Tom Stolp
Mike Springer	Thurman Wade

CALL TO ORDER

The regular meeting of the OCIPUG Board of Directors was called to order by the President at 6:50 p.m. at the SIG space.

APPROVAL OF MINUTES

The minutes of March 29 were approved as read with the correction of Wendy Sarrett's misspelled name.

TREASURER'S REPORT

Sunny Lockie moved, seconded by Paul Fuller and carried, to approve the treasurer's report as presented.

Linda moved that a vote of thanks be given Sunny for acting as Jonathan Means' replacement at Saturday's meeting.

PUBLICATIONS REPORT

Ginger Buck moved, seconded by Wendy Sarrett and passed, to approve the publications report as presented by Sunny Lockie.

BBS

Bob Ottke expressed thanks to Bob Basaraba for his work with the modems. We have renewed our Wildcat automatic upgrade. The Board discussed use of the BBS by nonmembers; Bob will correlate his list with the membership chairman's. Bob Basaraba suggested making a *How to use the BBS* diskette for \$2 and also that an executable text file be made available on the BBS. Bob Ottke offered to make copies on 360 disks to be available at the meeting to new members. Wendy moved, seconded by Bob Basaraba and carried, to accept Bob Ottke's suggestion and offer.

HOT LINE

Paul Fuller has made changes in the operation of the hot line; it now has three mail boxes. Audrey Wolden volunteered to assist Paul in his absence.

PROGRAM CHAIRMAN

Terry Currier announced that in May we will have presentations on GeoWorks 2.0 and Dr. John Goodman will talk about his book *DOS Power Tools*; in June we will have an auction with vendors present; in July, WordPerfect 6.0 will be presented and author Lynn Walford will speak on how to make money with your PC; XTREE for Windows is also scheduled for a future presentation...Terry moved that the photographer be paid \$16 for the group pictures he took in October. Max said he will bring an enlargement to the SIG space to be placed on display.

Motion: Bob Basaraba moved, seconded by Wendy and carried, that we get someone to handle and be given responsibility for setting up equipment and seeing to its functioning at general meetings. Terry Currier, as Program Chairman, will work on this.

SIGS

Walt Strong reported the SIGS are in good shape. He suggested use of a 486 to replace the 386 16 MHz computer presently being used, as well as, updating software to DOS 6.0. Ned Stewart offered to do diskette copying for the club. Steve Burnside is going to see about getting a 486. He and Walt will work together on providing two computers for the SIG space.

OLD BUSINESS

Bob Basaraba offered to have his company work in conjunction with Mike Springer to print and sell the first 200 copies of Mike's *BATCH FILE BASICS* as a donation to OCIPUG. Bob said he would accept the responsibility for doing this and absorb the loss if necessary.

NEW BUSINESS

Bob Ottke moved that Bob Basaraba be authorized to spend up to \$100 on a trial basis to make a rack or two for display of OCIPUG material in computer stores. Motion was seconded by Paul Fuller and carried.

Steve Burnside was approached by a member who suggested providing used computer equipment to bright, deserving grade school students on a long-term basis to teach them how to use computers.

Walt Strong expressed an interest in teaching elementary classes for new members using the SIG space on off-



MICROSOFT
Entertainment Pack

Ralph Doughty	Joseph Lebovitz
Joel Miller	Seymour Spiegel
Kenneth Kamber	Ken Goodnight
Bill Singleton	Harold Schaefergen
Steve Blakesley	

MS DOS 6 Upgrade

John Gallie	Judy Lopez
Tom Clissold	Roger Stumm
Wayne Ali	David McDougall
Jorge Medina	Dino Panicacci
Max Mayfield	Gene Cochran
Jacqueline Keller	Dean Raustadt
Gerald Sinykin	Herb Carlson
Alvin Hart	Clifford Benton
Linda Campbell	Barry Baxter
Virginia Reese	Tim Saylare
Greta Ianelli	Tony Camicello
Tinhtan Nguyen	Dave Lorenzini

CHINON
T-Shirt

John Goodman	Peter Christie
Bob Peringer	Bernard Fowle
Pete DeMeyer	Jim Allen
Barbara Hazeltine	Tom Phillips

CD Disk Cleaner

Terri Hansen	Harold Howarth
Mark Porter	

CD Set

Beverly Blakeley	Will Lujt
John Gallie	Marilyn Cross
Chet Brisco	

SYMANTEC
Norton Desktop

Peter Christie	John Starcic
----------------	--------------

Norton Utilities

David Black	Martin Ruby
-------------	-------------

Norton Backup

Donald Wilgue	Jason Burris
---------------	--------------

APRIL 1993 FINANCIAL REPORT
Linda Fox, Treasurer

	Operating Funds	Tim Smith Scholarship Fund
Cash Balance - March 31, 1993	\$ 6,564.34	\$ 3,660.88
INCOME		
General - Interest Income	\$ 12.28	\$
Library & Recycling - Sales	41.95	
Membership Dues - New	2,943.00	
Dues - Renewal	1989.00	
Microsoft Rollout Drive		726.00
Member Cash Contributions	58.75	
Total Income	\$ 5,044.98	\$ 726.00
EXPENSES		
Rent - OCC Science Hall	\$ 180.00	
SIGS - Rent-SIG Space	831.00	
Software	50.00	
BBS - Telephone	99.94	
Newsletter - Printing	1,580.69	
Postage	200.00	
Board - Supplies	39.16	
Miscellaneous	20.00	
Total Expenses	\$ 3,000.79	
Net Change in Cash Balance	\$ 2,044.19	\$ 726.00
Cash Balance - April 30, 1993	\$ 8,608.53	\$ 4,388.88

BOARD MEETING MINUTES

....Continued from previous page

-time use. He will work up a proposal to present to the Board at a later date.

George Blanc said a professor expressed dissatisfaction with the way the OCC facility was left last Saturday. Tea things had been left by a previous user in the back room, but the Board did leave an empty box and failed to restore some of the furniture to its usual place.

ADJOURNMENT

The meeting was adjourned at 9:00 p.m. ■

(Editor's note: The above minutes do not become official or certified until adopted by the Board at their next Board meeting.)

For those who have ordered or are waiting to purchase SpinRite 3.1, be advised that the shipping date has been advanced to mid or late June, according to the Sales Department at Gibson Research.

1993 OCIPUG BOARD OF DIRECTORS

OFFICERS

President	Max Lockie	644-0103
Vice President	Robert Ottke	759-1515
Secretary	Audrey Wolden	847-8771
Treasurer	Linda Fox (310)	867-7054
Past President	Stephen Burnside	544-5599

DIRECTORS

Bob Basaraba	1993	559-6539
Ginger Buck	1994	534-7878
Robin Clark	1993	731-1944
Terry Currier	1993	774-2018
Paul Fuller	1994	662-7801
Sunny Lockie	1993	644-0103
Wendy Sarrett	1994	733-9906
Stan Sabin	1994	968-7307

PEOPLE AND NUMBERS TO KNOW

Membership	Jonathan Means	542-2204
SIG Chairman	Walt Strong	557-7008
Program Chairman	Terry Currier	774-2018
Bulletin Board	Robert Ottke	759-1515
Library Committee		
Equipment Coordinator		

OCIPUG BBS & MESSAGE LINE NUMBERS

Public Line (1200/2400/9600/14400)	843-0388
Members only (1200/2400/9600/14400)	843-9248
OCIPUG Info & Message line	843-2048

OCIPUG General Meeting Dates 1993

Our General Meetings are held on the last Saturday of each month unless shown with asterisk below.

May 29

June 26

July 31

August 28

September 25

October 30

Membership Form

Bring to General Meeting or mail to return address on the back cover

New Renewal Information Update

Date: _____

Have you ever been a member of OCIPUG? _____ If so, what is your member number: _____

Individual Membership \$36.00 per year Family Membership \$45.00 per year

Donation: \$ _____

Total Enclosed: \$ _____

Title: Mr., Mrs., Ms., Dr. (Circle One)

First Name: _____ Last Name: _____ Family Members: _____

Address: _____ Unit No. _____

City: _____ State: _____ Zip Code: _____

Home Phone: _____ Work Phone: _____

I consider myself to be: Beginner Intermediate Advanced

My computer is a None 8088(XT) 286(AT) 386SX 386 486SX 486

OCIPUG Business Sponsorship Program



GARDEN OF EDEN
16485 Magnolia Street
Westminster 92683
841-4994

Your support enables us to better serve our members.

If you or your company would like more information on this program, please call Stephen Burnside at (714) 544-5599.

Orange Coast IBM PC User Group
Post Office Box 6100-211
Costa Mesa, California 92628

Postmaster: Form 3547 Requested
Return and Forwarding Postage Guaranteed

BULK RATE
U.S. Postage Paid
Costa Mesa, CA
92628
Permit No. 292

DATED MATERIAL — DO NOT DELAY